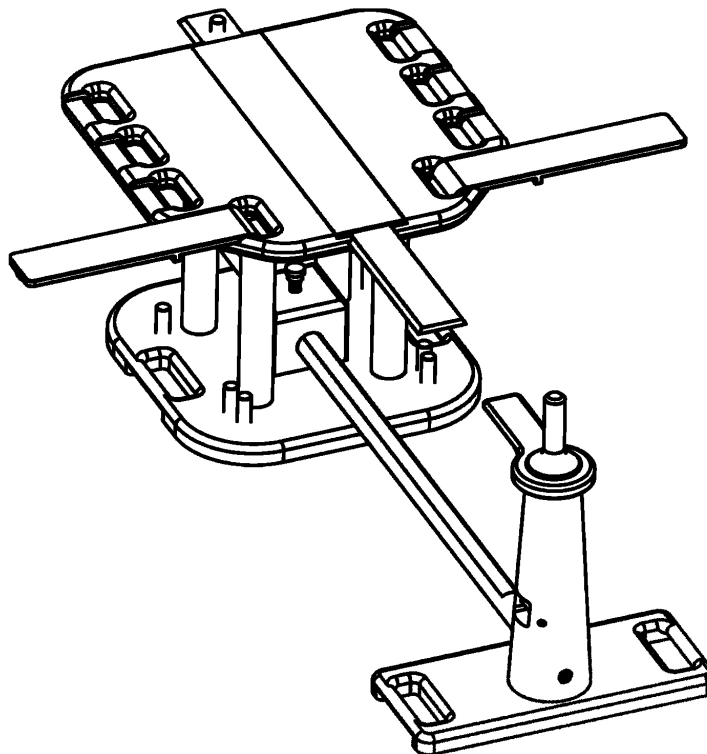


Important Information:
Read Before Using

Spica Table

operating & Maintenance Manual



OrthoPediatrics and Children Are Not Just Small Adults are registered trademarks of OrthoPediatrics Corp.

Table of Contents

GENERAL SAFTY RULES	3
MOUNTING INSTRUCTIONS	4
ASSEMBLY INSTRUCTIONS: PATIENT SEAT ASSEMBLY	5
Assembling the Patient Seat Assembly	5
CLEANING AND MAINTENANCE	7
WARRANTY INFORMATION	8
WARRANTY PERIOD	8
I. WHAT WARRANTY COVERS AND FOR HOW LONG:	8
II. GENERAL PROVISIONS:	8
III. HOW TO GET WARRANTY SERVICE:	9
IV. WHAT THIS WARRANTY DOES NOT COVER:	9
V. GOVERNING LAW	9
REPLACEMENT PARTS.....	10

GENERAL SAFTY RULES

Read and understand all instructions. Failure to follow all instructions may result in personal injury.

Use only OrthoPediatrics approved parts and accessories. Do not attempt to modify any parts or accessories. Any use of parts not supplied by OrthoPediatrics will void all warranties. Failure to comply may result in injury to the user or patient.

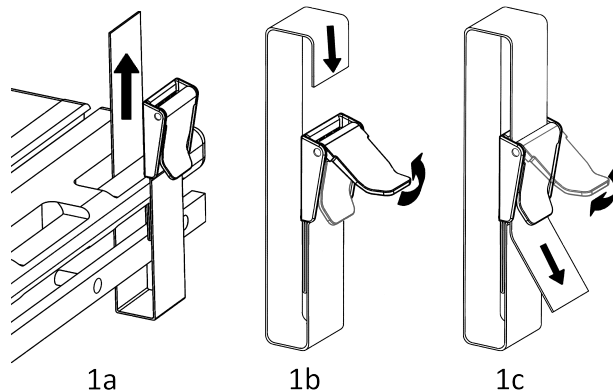
WARNING:

- **The maximum patient weight limit on OrthoPediatrics Spica Table is seventy five (75) pounds. Exceeding this weight may cause serious injury to operator or the patient, or it may damage the Spica Table.**
- **The maximum patient height for the OrthoPediatrics Spica Table is sixty (60) inches. Exceeding this height limit may cause serious injury to operator or the patient, or it may damage the Spica Table.**
- **Only qualified individuals should use the OrthoPediatrics Spica Table.**
- **The OrthoPediatrics Spica Table is non sterile. Please see Cleaning and Maintenance for further instructions.**

MOUNTING INSTRUCTIONS

⚠ WARNING:

- **Use only mounting straps provided by OrthoPediatrics. Failure to secure the Spica Table as described below, may reduce the loading capacity of the system, or allow unintended motion resulting in injury to the operator or the patient, or it may damage the Spica Table.**



Step 1: Select a sturdy mounting surface (an OR table with rails or some other large smooth surface) capable of supporting 400+ pounds.

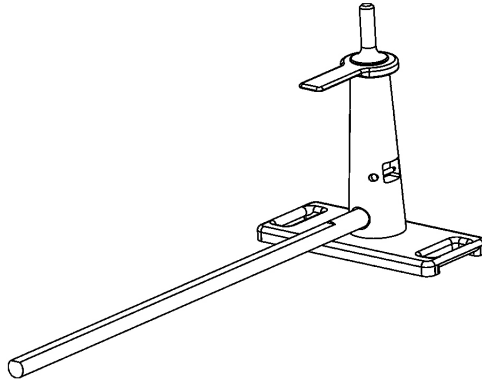
Step 2: Place the Spica Table on the selected support surface. Position as needed for anesthesia and/or other equipment.

Step 3: Use the mounting straps provided to secure the Patient Platform and the Patient Seat to the OR table. Slip the end of the strap up through the rails of the OR (figure 1a); making sure the orientation of the buckle is as shown. If no rails or other attachment point can be found, then contact your sales representative to purchase extended length straps for wrapping all the way underneath the OR table.

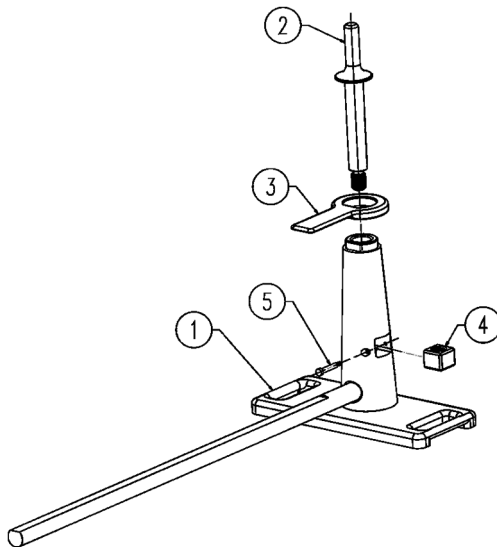
Step 4: Continue to route the strap up through the mounting slot of the Patient Platform and the Patient Seat.

Step 5: Bring the strap back to the opened buckle and slide the end of the strap through the cam locking mechanism (figure 1b). Pull the end of the strap until all possible slack is taken up. Then, close the lever of the cam lock (figure 1c) to fully secure the strap in place. Use whatever appropriate means to stow the excess strap material out of the way of the Spica cast application.

ASSEMBLY INSTRUCTIONS: PATIENT SEAT ASSEMBLY



Assembling the Patient Seat Assembly



Item	Description	QTY
1	Base	1
2	Cap	1
3	Seat	1
4	Square Seat Nut	1
5	Nylon Retaining Bolt	1

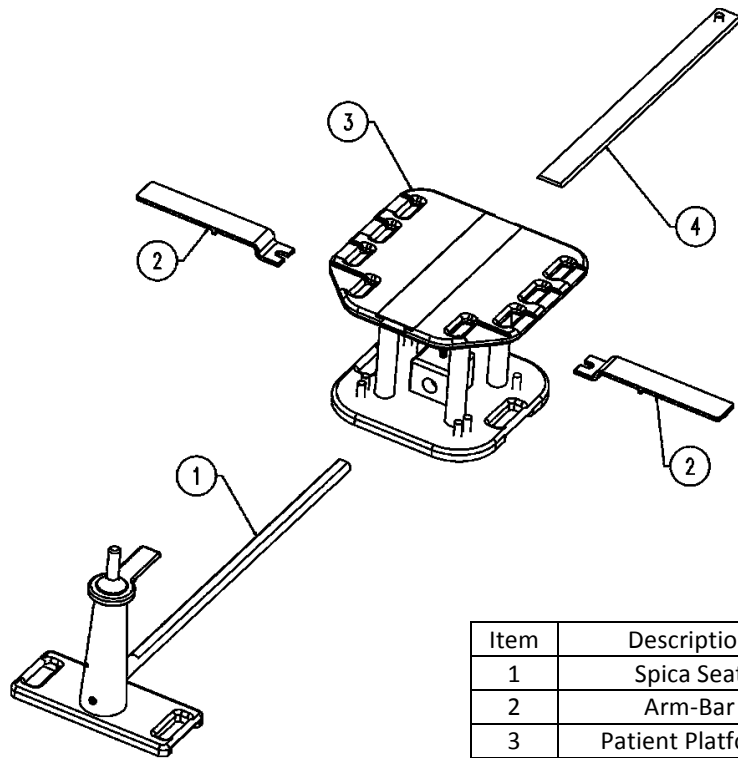
Step 1: Slide Square Seat Nut into Base.

Step 2: Insert the Nylon Retaining Bolt into the Base. Do not over-tighten.

Step 3: Slide the Seat over the Base Post. Position the “D” shape cutout so it matches the corresponding feature on the post. This feature holds the seat in the correct alignment position for the procedure.

Step 4: Screw the Cap into the Base. Do not tighten more than hand-tight.

ASSEMBLY INSTRUCTIONS: SPICA TABLE



Item	Description	QTY
1	Spica Seat	1
2	Arm-Bar	1
3	Patient Platform	1
	Back Board	1

Step 1: Slide Spica Seat into Patient Platform and lock down using Nylon Thumb Screw.

Step 2: Slide Back Board into slot in Patient Platform top.

Step 3: Drop forked side of Arm-Bar into slots along both sides of the Patient Platform adjusting to the patient.

Step 4: Follow the instructions in "Mounting Instructions" to secure the Spica Table to the OR table.

Step 5: Apply soft goods prior to placing patient onto the Spica Table.

CLEANING AND MAINTENANCE

To clean the Spica Table use a soft cloth, remove any dirt or debris from the unit. Approved cleaning agents for disinfecting the Spica Table include: Isopropyl alcohol, quaternary ammonium compounds, bleach and hydrogen peroxide.

There are no parts in the Spica Table for the user to service. All service must be performed by OrthoPediatrics. Disassembly or removal of any labels will void warranty.

WARNING:

- **Do not use povidone iodine solutions when cleaning the Spica Table. Only use the cleaning agents that are specified above. This will cause damage to the system voiding the manufacturing warranty.**
- **The Spica Table is non sterile, if the operator determines that a sterile field is required, sterile draping is required.**
- **Do not autoclave any part of the Spica Table. This will cause damage to the system voiding the manufacturing warranty.**

WARRANTY INFORMATION

This warranty of the OrthoPediatics Spica Table extends to the original purchaser of the OrthoPediatics Spica Table (as referenced below).

Description	QTY
Patient Platform	1
Patient Seat	1
Back Board	1
Arm-Bar	2

WARRANTY PERIOD

I. WHAT WARRANTY COVERS AND FOR HOW LONG:

The OrthoPediatics Spica Table is warranted to the original purchaser to be free from defects in materials and workmanship under normal use and service for a period of 60 days from the original purchase date. In the absence of proof of purchase, warranty terms will be based upon original shipment date. OrthoPediatics, at its option, will at no charge either repair or replace the part (with new or reconditioned parts) during the warranty period provided the purchaser notifies OrthoPediatics according to the terms of this warranty. A repaired or replaced part is warranted for the balance of the original applicable warranty period. This is the complete warranty for the product manufactured by OrthoPediatics. OrthoPediatics assumes no obligations or liability for additions or modifications to this warranty unless made in writing and signed by an officer of OrthoPediatics. OrthoPediatics cannot be responsible, in any way, for any ancillary equipment not furnished by OrthoPediatics, which is attached to or used in connection with the product, or for operation of the product with any ancillary equipment and all such equipment is expressly excluded from this warranty.

II. GENERAL PROVISIONS:

This warranty sets forth the full extent of OrthoPediatics' responsibilities regarding the product. Repair or replacement of the product, at the option of OrthoPediatics, is the exclusive remedy. OrthoPediatics shall not be held liable for any other damages, either direct or consequential. THE WARRANTIES PRINTED ABOVE ARE THE ONLY WARRANTIES APPLICABLE TO THIS PURCHASE. ALL OTHER WARRANTIES, EXPRESSED OR IMPLIED, INCLUDING BUT NOT LIMITED TO, THE IMPLIED WARRANTIES OF MERCHANTABILITY AND FITNESS FOR A PARTICULAR PURPOSE ARE DISCLAIMED.

III. HOW TO GET WARRANTY SERVICE:

Purchaser must notify their OrthoPediatrics representative or call OrthoPediatrics Customer Service at 1-877-268-6339 (1-574-268-6379 for International calls) or visit www.OrthoPediatrics.com within the applicable warranty period for information on how to obtain warranty service.

IV. WHAT THIS WARRANTY DOES NOT COVER:

- A) Defects or damage resulting from use of the product in other than its normal and customary manner (refer to operating manual for usage guidelines).
- B) Defects or damage from misuse, accident, water, chemicals or other liquids, or neglect (refer to operating manual for usage guidelines).
- C) Defects or damage from improper testing, operation, maintenance, alteration, modification or adjustment (refer to operating manual for usage guidelines).
- D) Breakage or damage unless caused directly by defects in material workmanship.
- E) A product subjected to unauthorized modifications, disassemblies or repairs (including, without limitation, the addition to the product of non-OrthoPediatrics manufactured and or supplied equipment) which adversely affects performance of the product or interferes with OrthoPediatrics' normal warranty inspection and testing of the product to verify any warranty claim.
- F) Product which has had the serial number removed or made illegible.
- G) Freight costs to the repair facility.
- H) Scratches or other cosmetic damage to product surfaces that does not affect the operation of the product.
- I) Normal and customary wear and tear.

V. GOVERNING LAW

This Warranty is governed by the laws of the State of Indiana

REPLACEMENT PARTS

Description

Spica Table	01-1006-0001
Includes:	
Patient Seat	03-1006-0100
Patient Platform	03-1006-0200
Arm-Bars (2qty)	03-1006-0400
Back Board	03-1006-0500

Spica Table replacement parts:

Seat Post	03-1006-0107
Square Seat Post Nut	03-1006-0106

To order replacement parts or a new unit, please call OrthoPediatrics at 1-877-268-6339.

Use only OrthoPediatrics approved parts or accessories. Do not attempt to modify any parts or accessories.



OrthoPediatrics Corp.
2850 Frontier Drive
Warsaw, Indiana 46582
Customer Service: 1-877-268-6339
Fax Number: 1-574-268-6302
Email: customerservice@OrthoPediatrics.com