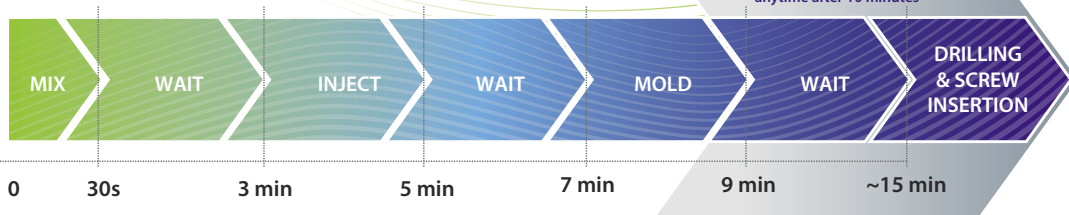
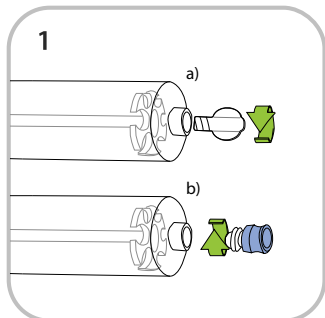


CERAMENT™ | BONE VOID FILLER

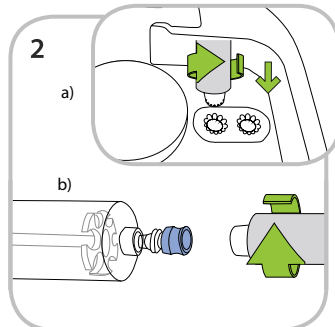
Mixing chart



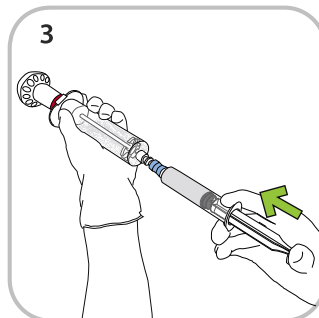
If Drilling & Screw Insertion is not required the wound can be closed anytime after 10 minutes



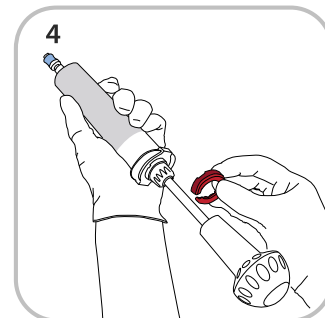
- 1
- a) Remove plug from large powder syringe
- b) Attach valve, clear end to the large powder syringe



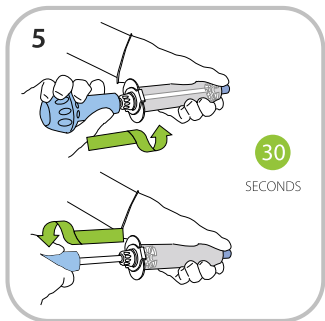
- 2
- a) Unscrew plug of liquid filled syringe using provided tool embedded in blister
- b) Attach liquid syringe to valve (blue end)



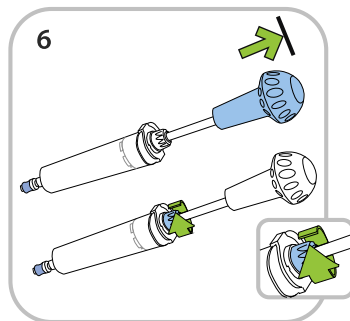
- 3
- Empty liquid into large powder syringe



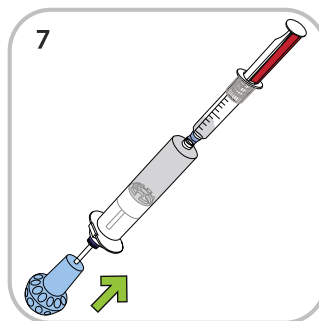
- 4
- Remove red plunger stop



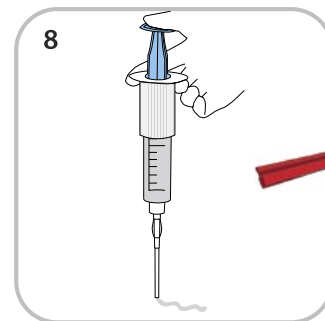
- 5
- Mix for 30 seconds



- 6
- Fully retract blue handle and turn blue knob clockwise



- 7
- Transfer paste into empty delivery syringe



- 8
- Remove red plunger stop and attach tip extender. Wait 3 minutes before injecting. Refer to time chart above for further options