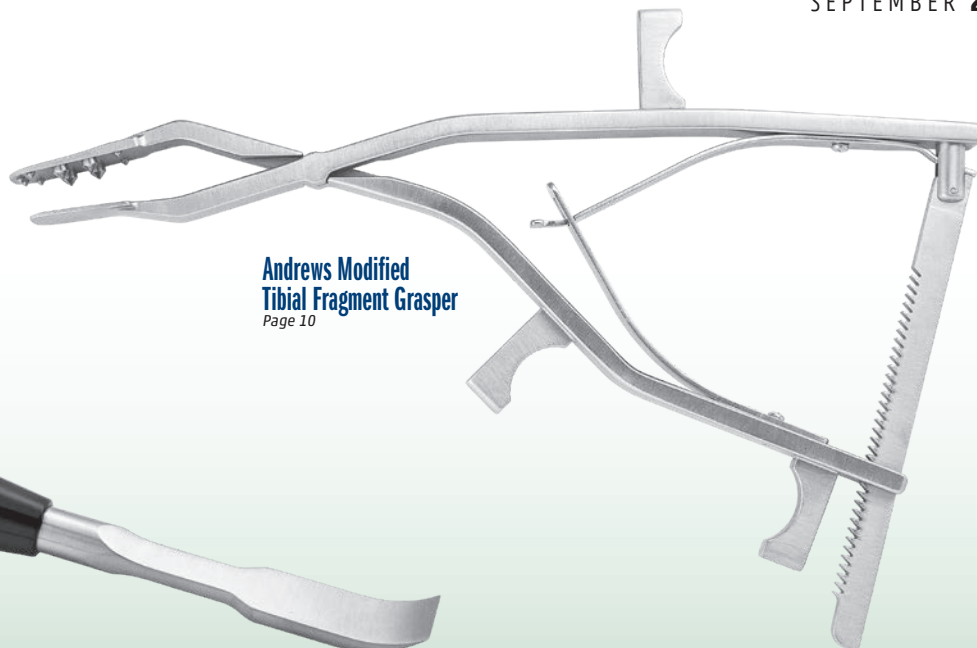


# INNOMED

ORTHOPEDIC INSTRUMENTS



SEPTEMBER 2020

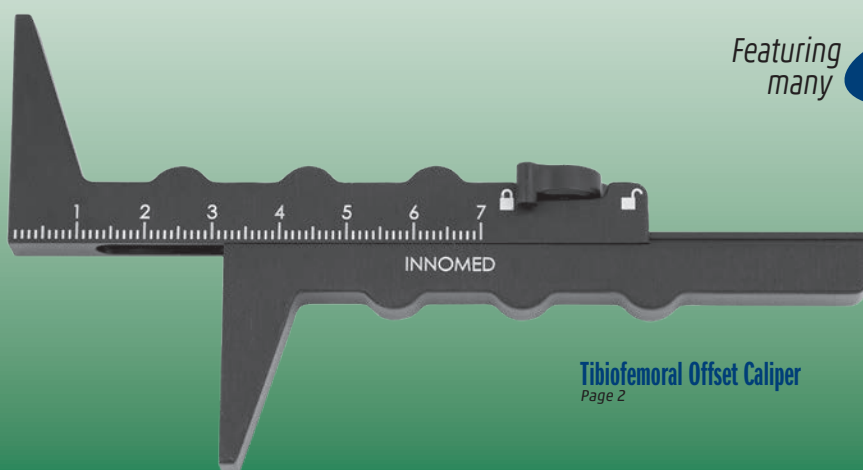


Andrews Modified  
Tibial Fragment Grasper  
Page 10



Durham Curved Osteotome  
Page 14

Featuring many **New!** instruments throughout



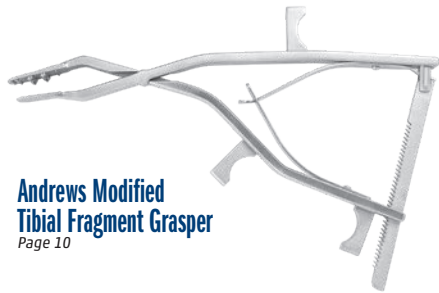
Tibiofemoral Offset Caliper  
Page 2

1.800.548.2362 • [WWW.INNOMED.NET](http://WWW.INNOMED.NET)

## Knee Instruments

# What's New In This Catalog?

a snapshot of all the *New!* instruments within



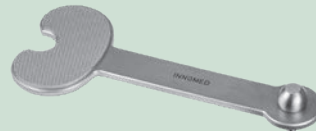
**Andrews Modified  
Tibial Fragment Grasper**  
Page 10



**Cheng Screw Removal and  
Bone Trephine Set - Three Larger  
Trephine Sizes**  
Page 32



**Durham Curved Osteotome**  
Page 14



**Grant TKA Anatomic  
Bone File Set**  
Page 26



**Mazzara Rongeur  
with Small Pistol  
Grip Handle**  
Page 5



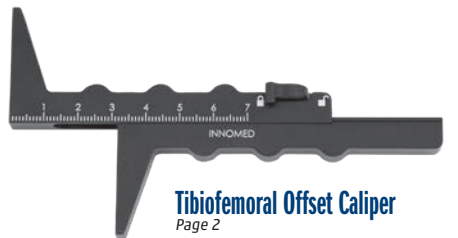
**Powers Modified Kocher Clamp  
- Tapered Narrow Jaw**  
Page 6



**Sarrat Forward  
Toothed Curettes**  
Page 17



**Shark Tooth Grasper  
with 12" Shaft**  
Page 8



**Tibiofemoral Offset Caliper**  
Page 2



**Torx/Hex  
Adapter Set**  
Page 33

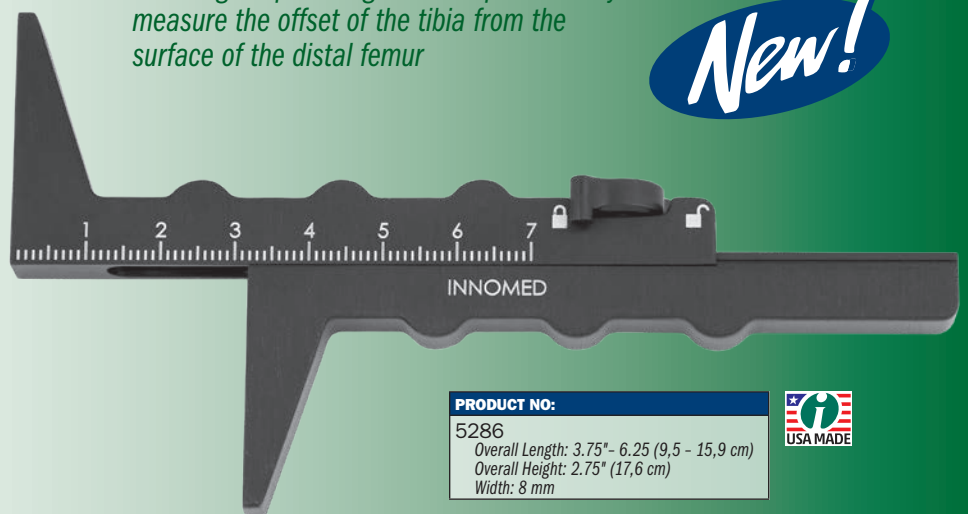


## Tibiofemoral Offset Caliper

Designed by Adam Rosen, DO

*A locking caliper designed to help accurately  
measure the offset of the tibia from the  
surface of the distal femur*

*New!*



### PRODUCT NO:

5286

Overall Length: 3.75" - 6.25 (9,5 - 15,9 cm)

Overall Height: 2.75" (17,6 cm)

Width: 8 mm



## Wilson Condylar Gauge

Designed by Ralph Wilson, MD

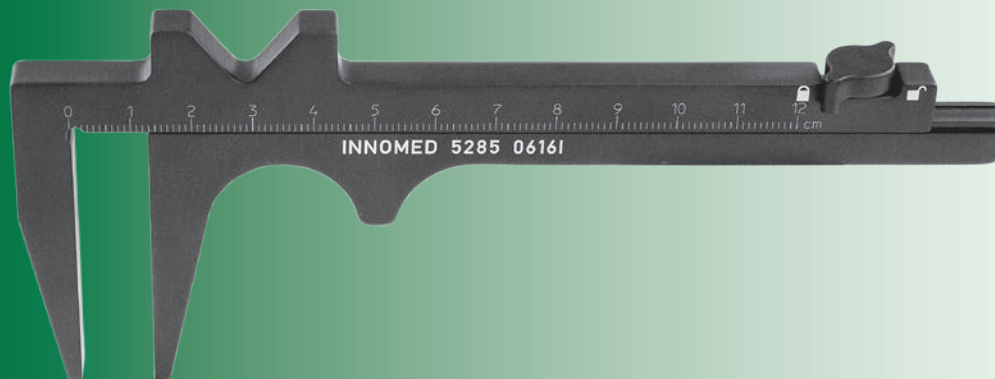
*Designed to measure the posterior femoral condyle after the posterior cuts have been made in total knee arthroplasty*

By measuring the depth of the residual condyle, the surgeon can resect excessive bone and measure the bone remaining to avoid impingement of the condyle against the tibial component which could impair knee flexion. The gauge is applied to the inferior or posterior cut surface of the femoral condyle, and the back to front residual bone is measured and then removed as needed. Measures to 30 mm.

### PRODUCT NO:

1194

Overall Length: 6" (15,2 cm)  
Width: .568" (14,4 mm)



## Ortho Caliper

Designed by Odell Woods

### PRODUCT NO:

5285

Caliper: 0 to 12 cm  
Leg Depth: 2" (5,1 cm)  
Overall Length: 6" (15,2 cm)  
Length expands to: 10.5" (26,7 cm)  
Width: 8 mm



## Mengato Depth Gauge

Designed by Richard Mengato, MD

*Ring-handled design with 3 rings gives 3-point grip for ease of holding and manipulation*

Allows for superior gauge control and manipulation, to advance, engage and maintain the hook on the distal cortex by leveraging the probe against the bone hole and keeping gentle tension on the hook.

### PRODUCT NO:

1139

Overall Length - Contracted: 7.125" (18,1 cm)  
Overall Length - Extended: 9.125" (23,2 cm)  
Gauge: 0 to 50 mm



US Patent # 8,512,349



### PRODUCT NO:

8015

Overall Length: 7.625" (19,4 cm)  
Scale: From 0 to 48 mm



## Depth Gauge

*Designed for one-handed use — helps to provide measurement of the depth/length of any bone hole for proper screw length determination*

## Tibia AccuAngle

*Designed to be placed on the tibia cutting block to check if the cut is level*

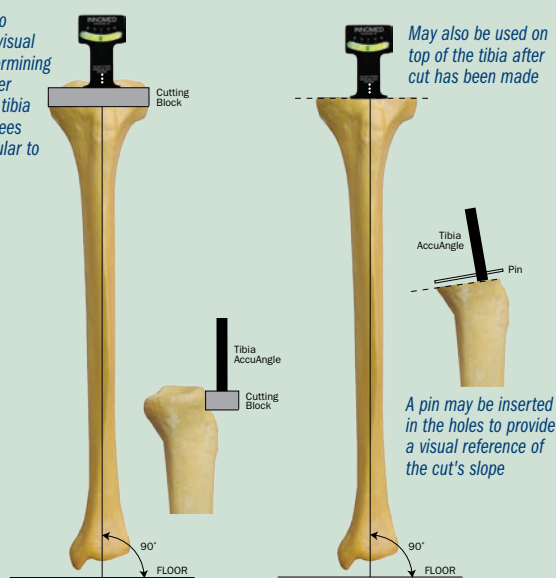
Magnetic base helps to hold the AccuAngle in place on a cutting block.



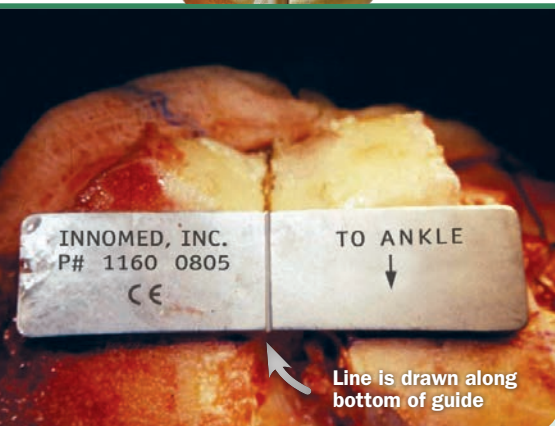
**PRODUCT NO:**  
1145  
Dimensions:  
2" x 3" (5,1 cm x 7,6 cm)



Can help to provide a visual aid in determining if the center line of the tibia is 90 degrees perpendicular to the floor



A pin may be inserted in the holes to provide a visual reference of the cut's slope



Line is drawn along bottom of guide

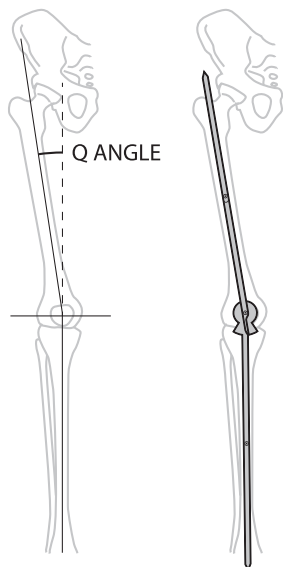
## Trans-sulcus Angle Guide

*Helps to establish the trans-sulcus line*

**PRODUCT NO:**  
1160  
Dimensions: 2.25" x .75" (5,7 cm x 1,9 cm)  
Post Depth: 1.5" (3,8 cm)



A line is drawn down the deepest part of the trochlear sulcus (Whiteside line) with a marking pen or cautery. The post on the guide is inserted into the hole in the femur made for an intramedullary alignment guide. The trans-sulcus angle guide is then rotated until the line on the guide lines up with the Whiteside line. A line is then drawn along the bottom of the guide.



## Merchant Surgical Goniometer

Designed by Alan Merchant, MD

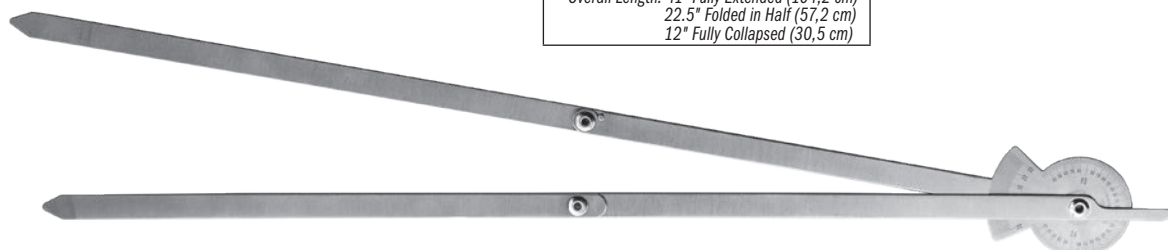
*Designed to help assess frontal plane limb alignment or measure the Q angle*

The extended length can reach from the center of the knee to the femoral head or the anterior superior iliac spine. The collapsible stainless steel device is autoclavable.

Collapsible and steam sterilizable.

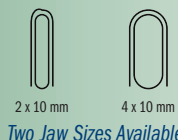


**PRODUCT NO:**  
2029  
Overall Length: 41" Fully Extended (104,2 cm)  
22.5" Folded in Half (57,2 cm)  
12" Fully Collapsed (30,5 cm)





**New!**



## Mazzara Rongeur with Small Pistol Grip Handle

Designed by James T. Mazzara, MD

*Small pistol grip handle lessens hand fatigue and slippage, and allows for better visualization*

| PRODUCT NO'S: |   |
|---------------|---|
| 1765-04       | Jaw Bite: 2 x 10 mm<br>Overall Length: 9" (22,9 cm) |
| 1765-05       | Jaw Bite: 4 x 10 mm<br>Overall Length: 9" (22,9 cm) |



## Modified Rongeur with Pistol Grip Handle

Design modification by Morteza Meftah, MD and Ira Kirschenbaum, MD, of an original design by James T. Mazzara, MD.

*A thin top cutter and deep lower cutter, with edges that are rounded off, allows the top cutter to slide into a tight space— specifically the acetabulum or the patella—while the pistol grip helps lessen hand fatigue and slippage, and allows for better visualization*

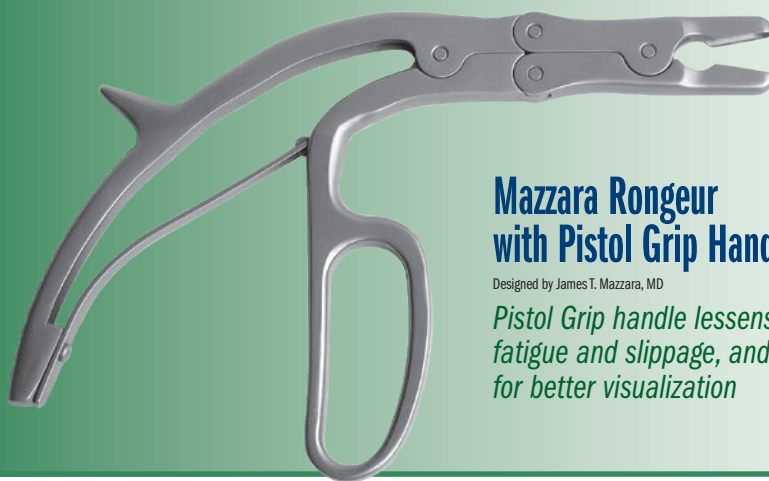


| PRODUCT NO: |   |
|-------------|---|
| 1765        | Jaw Bite Length: 18 mm<br>Jaw Bite Width: Tapered from 7 to 4.5 mm<br>Overall Length: 10" (25,4 cm) |



### PRODUCT NO'S:

|         |   |
|---------|---|
| 1765-01 | Jaw Bite: 5 x 14 mm<br>Overall Length: 10" (25,4 cm)  |
| 1765-02 | Jaw Bite: 7 x 16 mm<br>Overall Length: 10" (25,4 cm)  |
| 1765-03 | Jaw Bite: 10 x 16 mm<br>Overall Length: 10" (25,4 cm) |



## Mazzara Rongeur with Pistol Grip Handle

Designed by James T. Mazzara, MD

*Pistol Grip handle lessens hand fatigue and slippage, and allows for better visualization*



Three Jaw Sizes Available

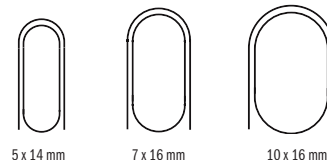
## Ortho Rongeur with Easy Grip Handle

*Offset handle lessens hand fatigue and slippage, and allows for better visualization*

Offset handle gives better gripping power and helps reduce hand fatigue. Finger grooves help to prevent hand slippage. The offset handle also allows for better visualization.

### PRODUCT NO'S:

|         |   |
|---------|---|
| 1780-01 | Jaw Bite: 5 x 14 mm<br>Overall Length: 8.75" (22,2 cm)  |
| 1780-02 | Jaw Bite: 7 x 16 mm<br>Overall Length: 8.75" (22,2 cm)  |
| 1780-03 | Jaw Bite: 10 x 16 mm<br>Overall Length: 8.75" (22,2 cm) |



Three Jaw Sizes Available

## Lotke Double Action Cartilage Graspers

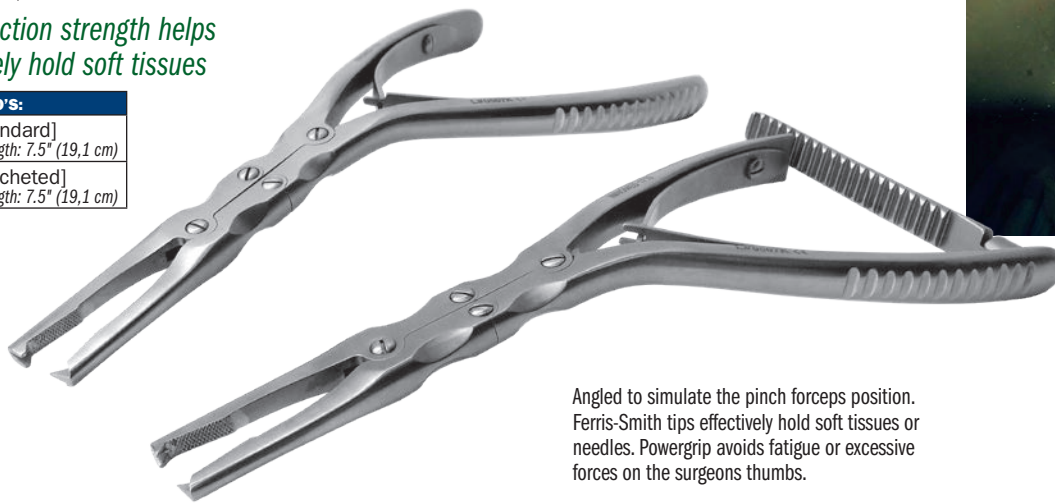
Designed by Paul Lotke, MD

*Double action strength helps to securely hold soft tissues*

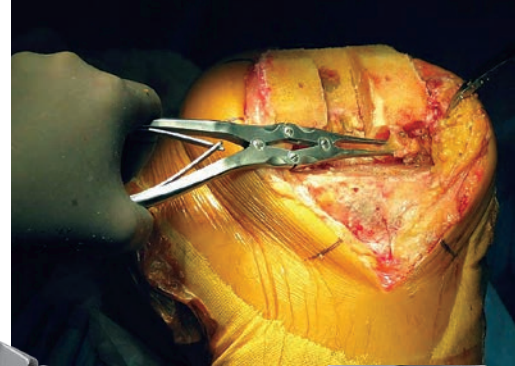
### PRODUCT NO'S:

|                                |
|--------------------------------|
| 1710 [Standard]                |
| Overall Length: 7.5" (19,1 cm) |
| 1715 [Ratcheted]               |
| Overall Length: 7.5" (19,1 cm) |

MADE EXCLUSIVELY  
FOR INNOMED IN  
GERMANY



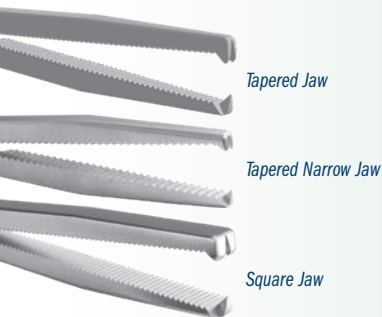
Angled to simulate the pinch forceps position. Ferris-Smith tips effectively hold soft tissues or needles. Powergrip avoids fatigue or excessive forces on the surgeons thumbs.



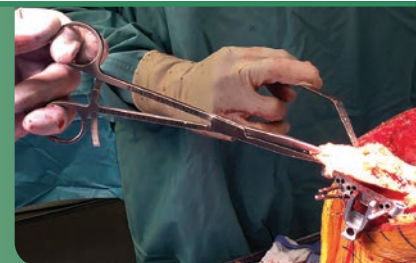
## Powers Modified Kocher Clamps

Designed by Mark Powers, MD

*Heavier design allows for a firmer grasping of bone and soft tissues*



**New!**  
NARROW, TAPERED JAW VERSION



### PRODUCT NO'S:

|                               |
|-------------------------------|
| 1813 [Tapered Jaw]            |
| Overall Length: 8.25" (21 cm) |
| Jaw Length: 2.5" (6,4 cm)     |
| Jaw at End: 5.2 mm x 4.1 mm   |
| 1813-01 [Tapered Narrow Jaw]  |
| Overall Length: 8.25" (21 cm) |
| Jaw Length: 2.5" (6,4 cm)     |
| Jaw at End: 5.2 mm x 3 mm     |
| 1814 [Square Jaw]             |
| Overall Length: 8.25" (21 cm) |
| Jaw Length: 2.5" (6,4 cm)     |
| Jaw at End: 6.5 mm x 5 mm     |



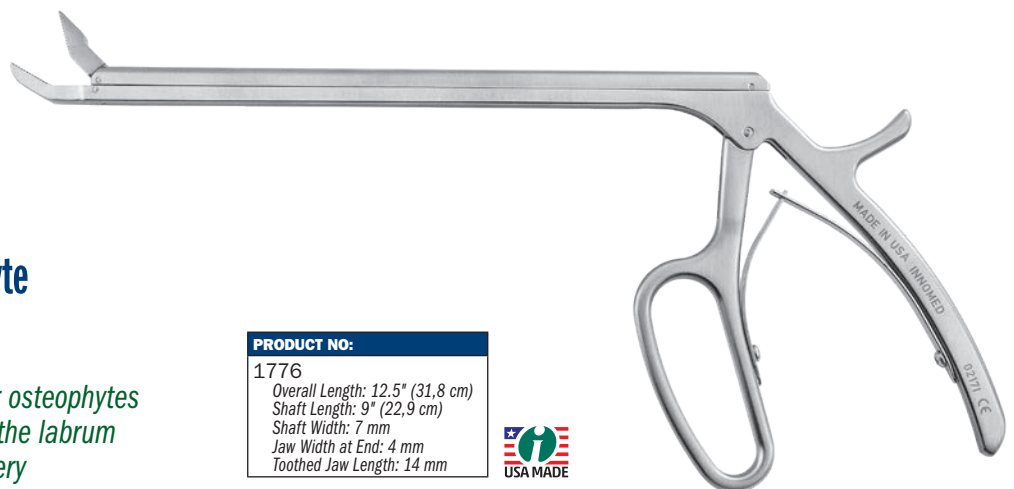
## Bhargava Knee Posterior Osteophyte and Anterior Hip Labral Grasper

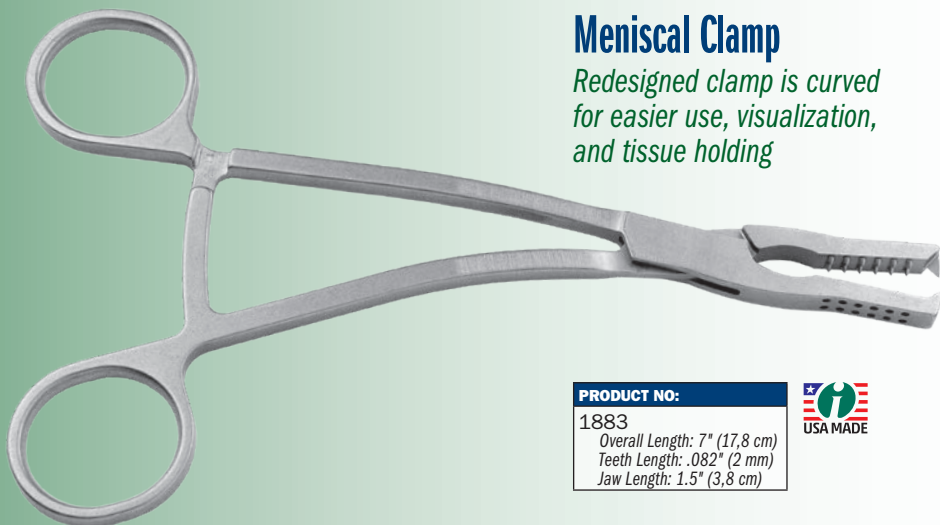
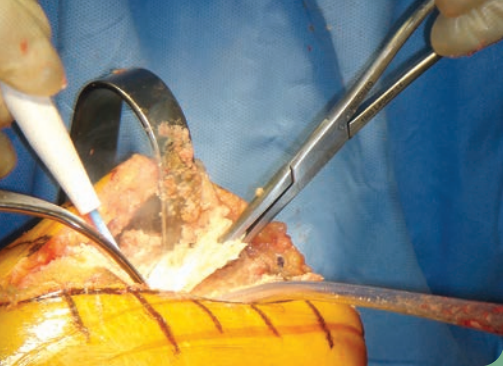
Designed by Tarun Bhargava, MD

*Very useful in helping to remove posterior osteophytes in knee surgery, and also to help remove the labrum and soft tissues in anterior total hip surgery*

### PRODUCT NO:

|                                 |
|---------------------------------|
| 1776                            |
| Overall Length: 12.5" (31,8 cm) |
| Shaft Length: 9" (22,9 cm)      |
| Shaft Width: 7 mm               |
| Jaw Width at End: 4 mm          |
| Toothed Jaw Length: 14 mm       |





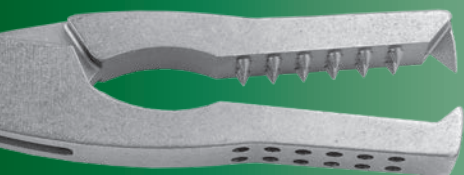
## Meniscal Clamp

*Redesigned clamp is curved for easier use, visualization, and tissue holding*

### PRODUCT NO:

1883

Overall Length: 7" (17,8 cm)  
Teeth Length: .082" (2 mm)  
Jaw Length: 1.5" (3,8 cm)



## Bhargava Modified Meniscal Clamp

Designed by Tarun Bhargava, MD

*Low-profile design helps facilitate grasping the posterior portion of the meniscus*

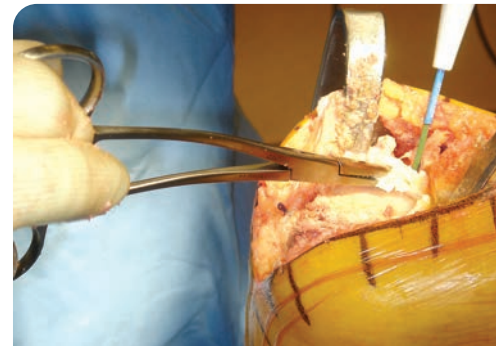
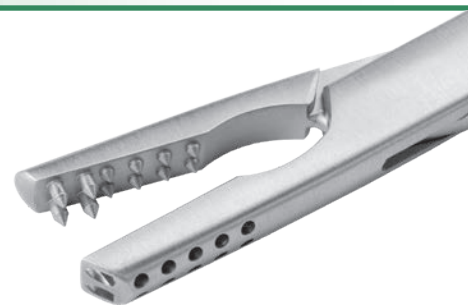


Improved bite when tension is placed on the meniscus.  
Can also be used to help remove the fat pad and suprapatellar bursa.

### PRODUCT NO:

1886

Overall Length: 7" (17,8 cm)  
Jaw Length: 1.125" (2,9 cm)



## Hannum Tissue Grasper

Designed by Scott Hannum, MD

*Teeth in jaw firmly holds bone and tissue*

Non-locking design can be easily gripped while allowing greater pressure to be applied. Available in three jaw sizes: short jaw for holding bone, medium jaw for smaller bones, and long jaw for tissue.



Jaw widths at actual size



### PRODUCT NO'S:

|                                 |
|---------------------------------|
| 1775-01 [Short Jaw]             |
| Jaw Width: 8 mm                 |
| Overall Length: 9.25" (23,5 cm) |
| 1775-02 [Medium Jaw]            |
| Jaw Width: 5 mm                 |
| Overall Length: 9.25" (23,5 cm) |
| 1775-03 [Long Jaw]              |
| Jaw Width: 3 mm                 |
| Overall Length: 9.25" (23,5 cm) |

MADE EXCLUSIVELY  
FOR INNOVEM IN  
GERMANY



## Sure Grip Soft Tissue Grasper

Designed by Andrew Glassman, MD

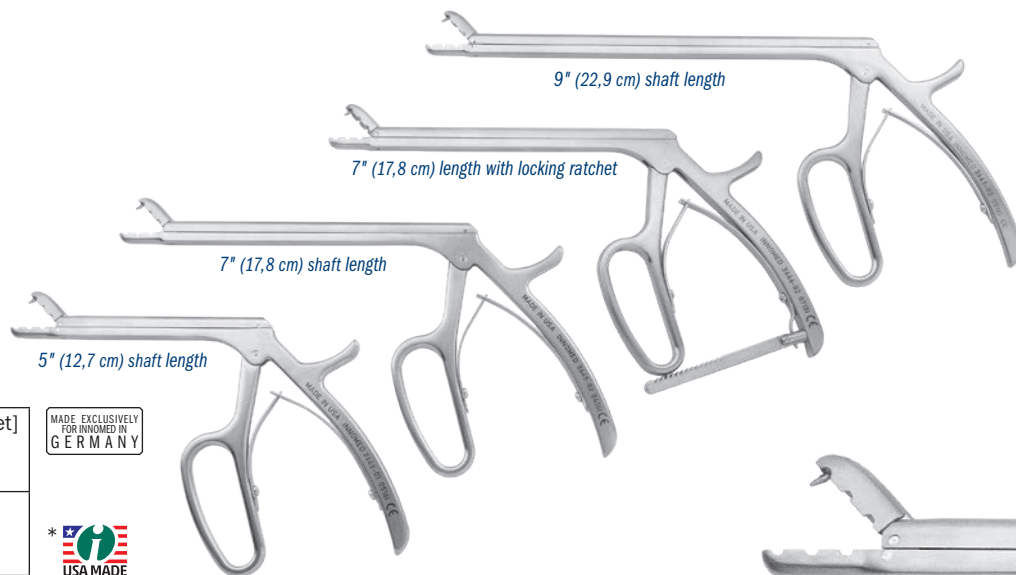
*Enables the surgeon to securely grasp soft tissue structures within the knee*

Incorporates a 3 mm spike into its upper jaw with a matching recess in the lower jaw, enabling the surgeon to securely grasp soft tissue structures within the knee. Particularly useful for grasping the posterior horn of either the medial or lateral meniscus. Also useful when excising the cruciate ligaments, capturing loose bodies, holding the retinaculum during patellar preparation, and grasping the capsule during wound closure.

### PRODUCT NO'S:

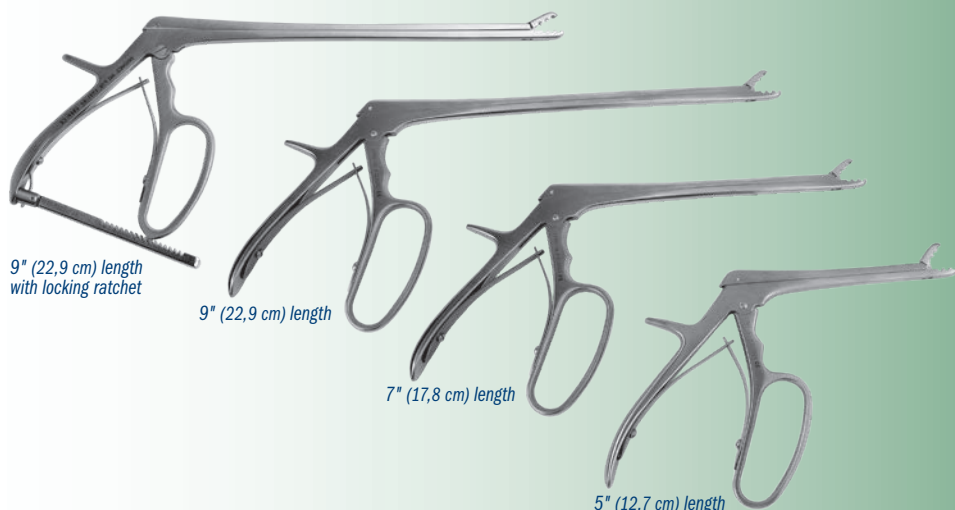
|  |  |
|--|--|
| 3645-01 [5"]<br>Overall Length: 8" (20,3 cm)<br>Shaft Length: 5" (12,7 cm)<br>Spike Depth: 3 mm  | 3646-02* [7" with Ratchet]<br>Overall Length: 10" (25,4 cm)<br>Shaft Length: 7" (17,8 cm)<br>Spike Depth: 3 mm |
| 3645-02 [7"]<br>Overall Length: 10" (25,4 cm)<br>Shaft Length: 7" (17,8 cm)<br>Spike Depth: 3 mm | 3645-03 [9"]<br>Overall Length: 12" (30,5 cm)<br>Shaft Length: 9" (22,9 cm)<br>Spike Depth: 3 mm               |

MADE EXCLUSIVELY  
FOR INNOMED IN  
GERMANY



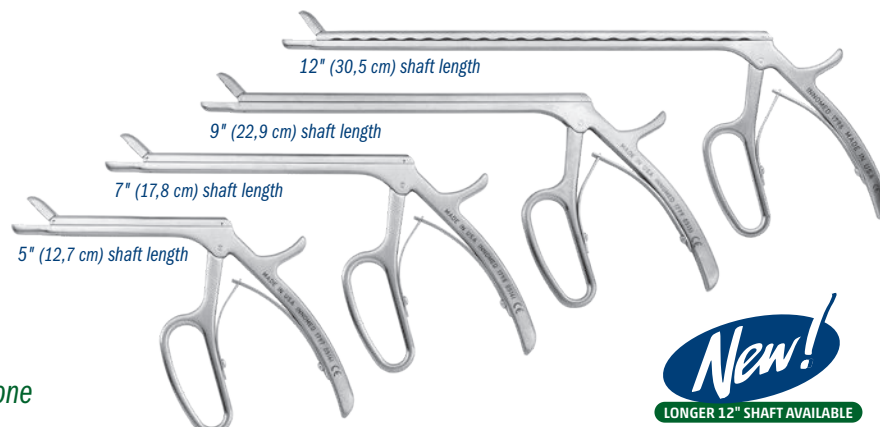
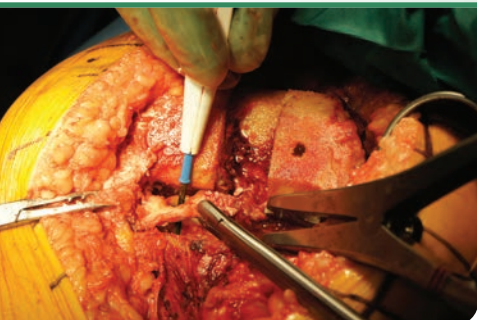
## Intraarticular Tissue Grasper/Rongeur

*Used to securely grasp tissue or can be used to rongeur tissue*



### PRODUCT NO'S:

|   |
|---|
| 1790-01 [5"]<br>Overall Length: 8" (20,3 cm)<br>Shaft Length: 5" (12,7 cm)                    |
| 1790-03 [7"]<br>Overall Length: 10" (25,4 cm)<br>Shaft Length: 7" (17,8 cm)                   |
| 1790-02 [9"]<br>Overall Length: 12" (30,5 cm)<br>Shaft Length: 9" (22,9 cm)                   |
| 1791-02 [9" w/Locking Ratchet]<br>Overall Length: 12" (30,5 cm)<br>Shaft Length: 9" (22,9 cm) |



**New!**  
LONGER 12" SHAFT AVAILABLE

## Shark Tooth Grasper

Designed by Luis Ulloa

*Sharp teeth help grasp onto tissue and bone*

Helpful in removing the labrum, and osteophytes around the acetabulum and around the glenoid. Also helps to remove meniscus, osteophytes and loose bodies. Helps facilitate working through a small incision without disrupting vision.

### PRODUCT NO'S:

|   |  |  |  |
|---|--|--|--|
| 1797 [5" Shaft]<br>Jaw Size: 6 mm x 10 mm<br>Overall Length: 8" (20,3 cm)<br>Shaft Length: 5" (12,7 cm) | 1798 [7" Shaft]<br>Jaw Size: 6 mm x 10 mm<br>Overall Length: 10" (25,4 cm)<br>Shaft Length: 7" (17,8 cm) | 1799 [9" Shaft]<br>Jaw Size: 6 mm x 10 mm<br>Overall Length: 12" (30,5 cm)<br>Shaft Length: 9" (22,9 cm) | 1796 [12" Shaft]<br>Jaw Size: 6 mm x 10 mm<br>Overall Length: 15" (38,1 cm)<br>Shaft Length: 12" (30,5 cm) |
|---|--|--|--|





## Tissue Graspers with Shark Teeth

Designed by Luis Ulloa

*Shark teeth help to grasp on to tissue and bone*

Shaft allows for use in narrow spaces.

### PRODUCT NO'S:

1784-01 [Up Angled Jaw]  
Shaft Length: 7" (17,8 cm)  
Overall Length: 10" (25,4 cm)  
Jaw: 9 mm Long x 5 mm High x 1.8 mm Wide

1784-02 [Straight Jaw]  
Shaft Length: 7" (17,8 cm)  
Overall Length: 10" (25,4 cm)  
Jaw: 9 mm Long x 5 mm High x 1.8 mm Wide

1784-03 [Down Angled Jaw]  
Shaft Length: 7" (17,8 cm)  
Overall Length: 10" (25,4 cm)  
Jaw: 9 mm Long x 5 mm High x 1.8 mm Wide

MADE EXCLUSIVELY  
FOR INNOVIMED IN  
GERMANY



## Cartilage Graspers

*Helps to grasp and hold cartilage, tendons, soft tissues and loose bodies*

Shaft allows for use in narrow spaces.



Shark Tooth Jaw



Saw Tooth Jaw



Saw Tooth Jaw with 6" (15,2 cm) Shaft.



Shark Tooth Jaw with 8" (20,3 cm) Shaft.

Shark Tooth Jaw with 5" (12,7 cm) Shaft.

### PRODUCT NO:

1785 [Saw Teeth]  
Shaft Length: 6" (15,2 cm)  
Overall Length: 9.25" (23,5 cm)

MADE EXCLUSIVELY  
FOR INNOVIMED IN  
GERMANY

### PRODUCT NO'S:

1777 [5" with Shark Teeth]  
Shaft Length: 5" (12,7 cm)  
Overall Length: 8.25" (21 cm)  
Jaw Bite: 2 mm x 6.5 mm

Shark tooth design modification by Michael Soudry, MD

1779 [8" with Shark Teeth]  
Shaft Length: 8" (20,3 cm)  
Overall Length: 11.25" (28,6 cm)

## Soudry Loose Body Grasper

Designed by Michael Soudry, MD

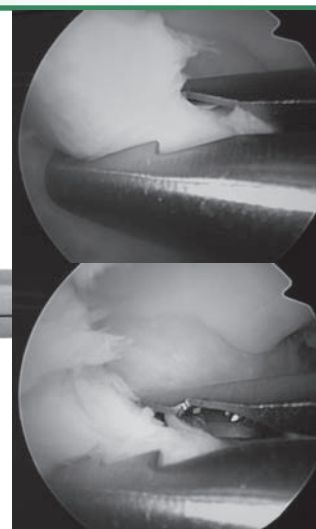
*Designed to help with the removal of soft tissue loose bodies in arthroscopy and open procedures*



### PRODUCT NO:

1769  
Overall Length: 9" (22,9 cm)  
Shaft Length: 6" (15,2 cm)

MADE EXCLUSIVELY  
FOR INNOVIMED IN  
GERMANY



## Long Jaw Needle Nose Pliers

### PRODUCT NO:

1833  
Overall Length: 7" (17,8 cm)  
Jaw Length: 2.25" (5,7 cm)  
Jaw Width Tapered from: 8 mm to 1.5 mm  
Jaw Height Tapered from: 12 mm to 2.5 mm

MADE EXCLUSIVELY  
FOR INNOVIMED IN  
GERMANY



**New!**

## Andrews Modified Tibial Fragment Grasper

Designed by Scott Andrews, MD

*Designed to help remove tibial bone during unicondylar and total knee arthroplasty*

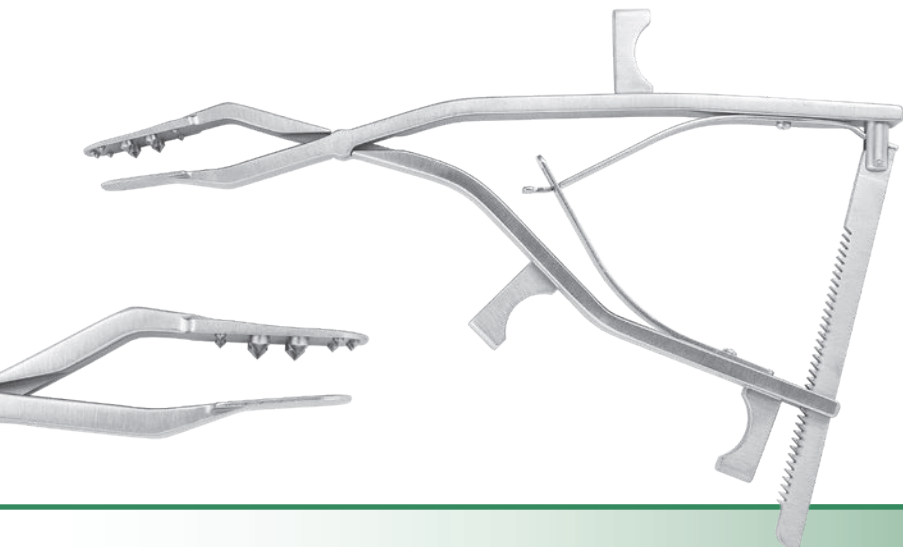
### PRODUCT NO:

1721

Overall Length: 10" (25,4 cm)

Jaw Dimensions: 1.44" x .72" (36,6 cc x 18,3 mm)

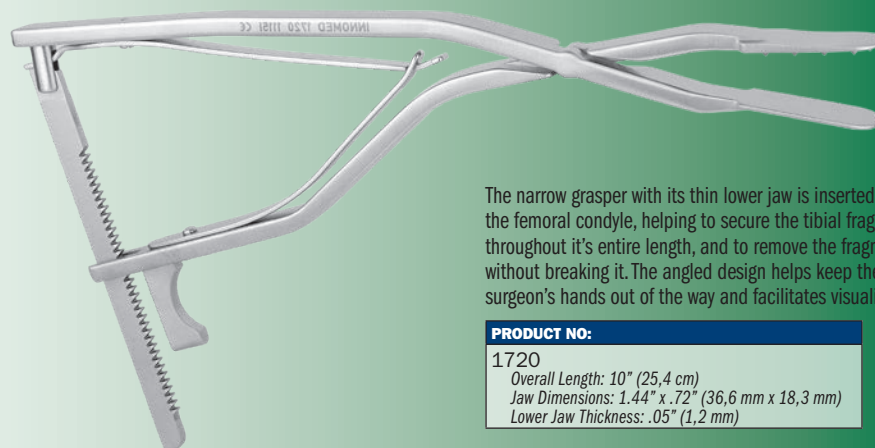
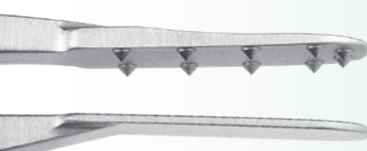
Lower Jaw Thickness: 1 mm



## Rosenstein Tibial Fragment Grasper for UKA

Designed by Alexander D. Rosenstein, MD

*Designed to help remove the tibial bone fragment in one piece during Unicompartmental Knee Arthroplasty*



The narrow grasper with its thin lower jaw is inserted under the femoral condyle, helping to secure the tibial fragment throughout its entire length, and to remove the fragment without breaking it. The angled design helps keep the surgeon's hands out of the way and facilitates visualization.

### PRODUCT NO:

1720

Overall Length: 10" (25,4 cm)

Jaw Dimensions: 1.44" x .72" (36,6 mm x 18,3 mm)

Lower Jaw Thickness: .05" (1,2 mm)



## Universal Calibrated Tibia/Patella Clamp

Designed by S. David Stulberg, MD

*Designed to be used to remove a tibia wedge, helps in everting the patella, and calibrations help in measuring the thickness of the patella and tibia wedges*

### PRODUCT NO:

3685

Overall Length: 10" (25,4 cm)

Calibrations: 0 to 26 mm

MADE EXCLUSIVELY  
FOR INNOMED IN  
GERMANY

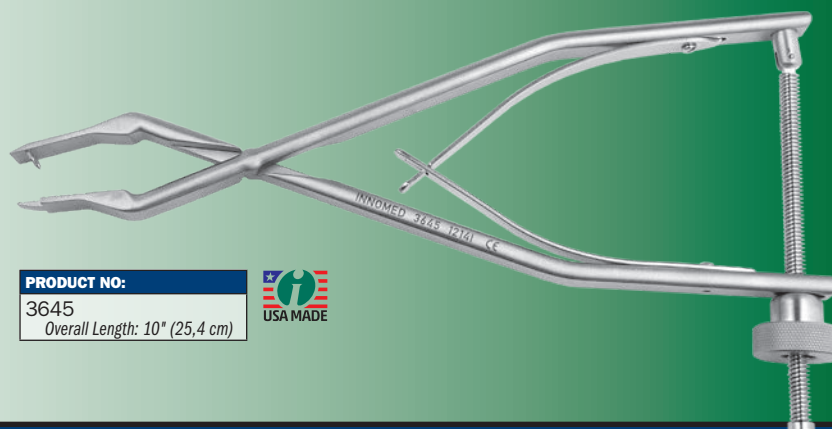
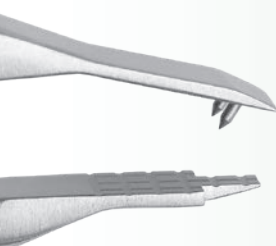


## Fracchia Tibia/Patella Clamp with Speed Lock

Designed by Michael J. Fracchia, MD & S. David Stulberg, MD

*Designed to be used to remove a tibia wedge, and helps in everting the patella*

Speed lock helps allow precise control and prevent unintended release.

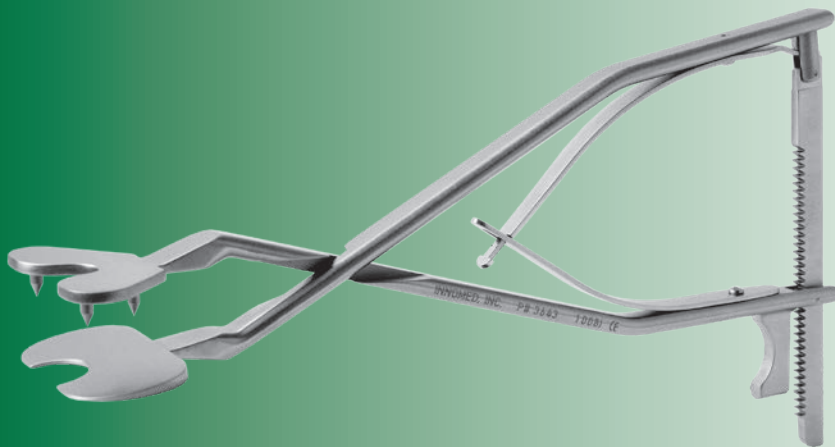


### PRODUCT NO:

3645

Overall Length: 10" (25,4 cm)





## Sidhu Tibia Clamp

Designed by Kuldeep Sidhu, MD

*Designed to be used to securely grasp and remove an entire tibial wedge*

The tapered lower pad slides under the cut tibial wedge without first having to use wedges, then, clamping allows the spikes in the upper pad to securely grasp the entire tibial wedge for easy removal.

### PRODUCT NO:

3643

Overall Length: 10.25" (26 cm)

Pads: 60 mm x 30 mm

Spike Length: 7,5 mm



## Andrews Modified Tibial Wedge Clamp

Designed by Scott Andrews, MD and Kuldeep Sidhu, MD

*Designed to help remove the cut tibial bone during total knee procedures*

The bone is held by the spikes which helps it to come out in one piece, and also helps with release of soft tissues from the bone.

### PRODUCT NO:

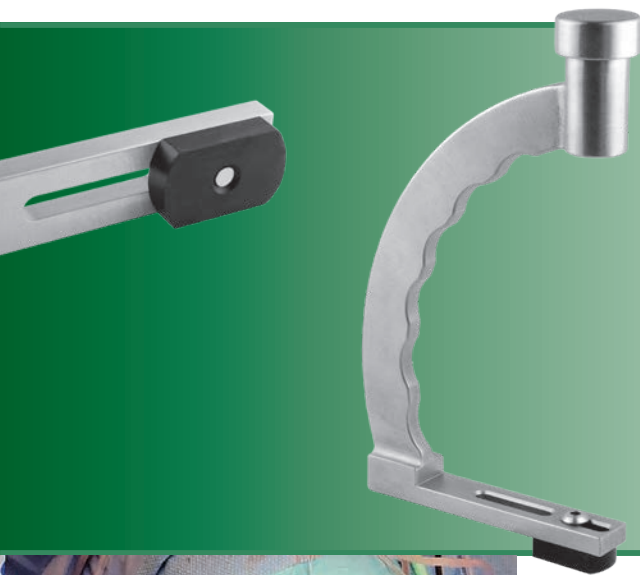
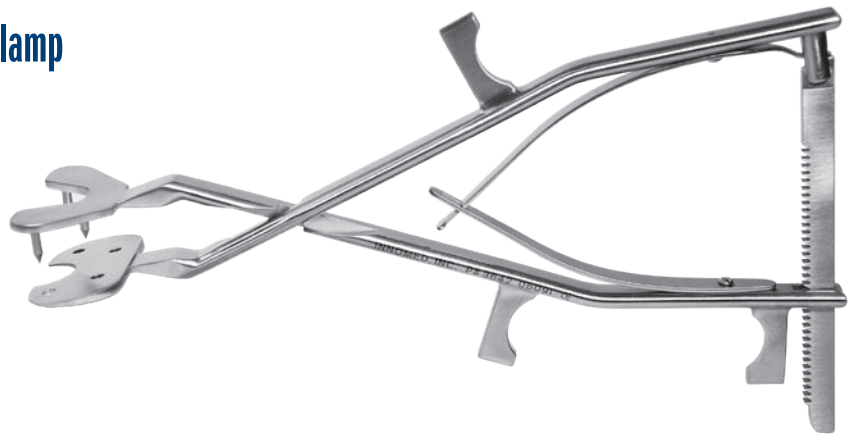
3642

Overall Length: 10.25" (26 cm)

Pads: 60 mm x 30 mm

Front Spike Length: 14 mm

Back Spike Length: 7,5 mm



## Tibial Impactor

Design modified by Atul F. Kamath, MD

*Assists in MIS unicompartmental cemented tibial tray impaction, and can also be helpful for impaction of other components such as ankle*

### PRODUCT NO'S:

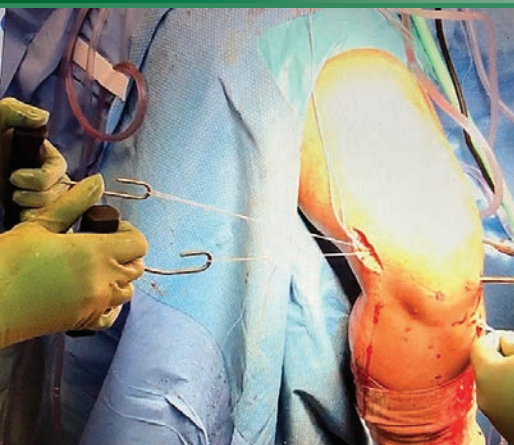
1129

Dimensions: 7" x 4" (17,8 cm x 10,2 cm)

Delrin Impactor Pad: 1" x .625" (2,5 cm x 1,6 cm)

### Replacement Part:

1129-02 [Replacement Pad Only]



## Seymour ACL Graft Advancer

Designed by Scott Seymour, MD

*Designed to facilitate the passage and tensioning of an ACL graft into the femoral and tibial tunnels*

A loop is tied in the prepared graft's passing sutures and the device is used to pull the graft into the tunnels, then to tension the fixation.

### PRODUCT NO:

1117

Overall Length: 4.35" (11,1 cm)

Handle Width: 4" (10,2 cm)

Hook Width: 19,5 mm Outside, 13,5 mm Inside

Hook Depth: 25 mm

Hook Diameter: 3 mm



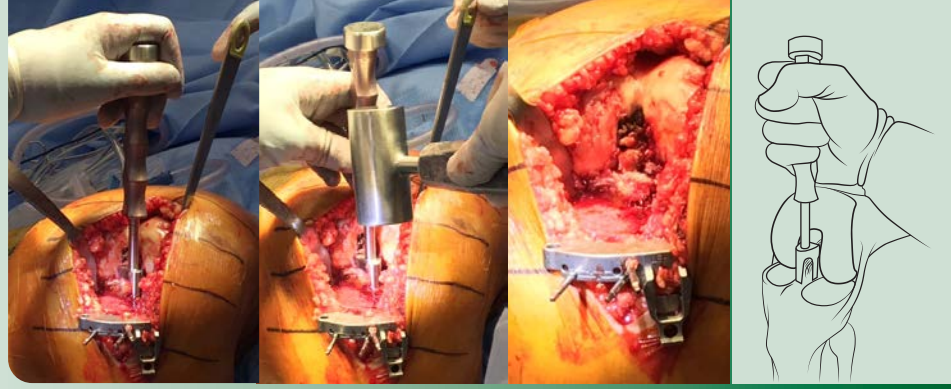


## Meftah PCL Protector

Designed by Morteza Meftah, MD

*Designed to help protect the posterior cruciate ligament in cruciate retaining total knee surgery during the proximal tibial cut*

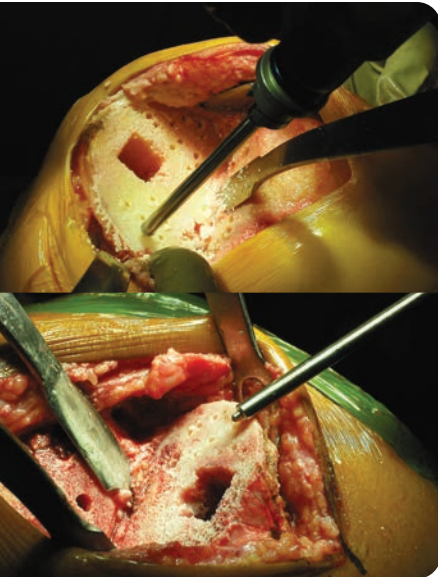
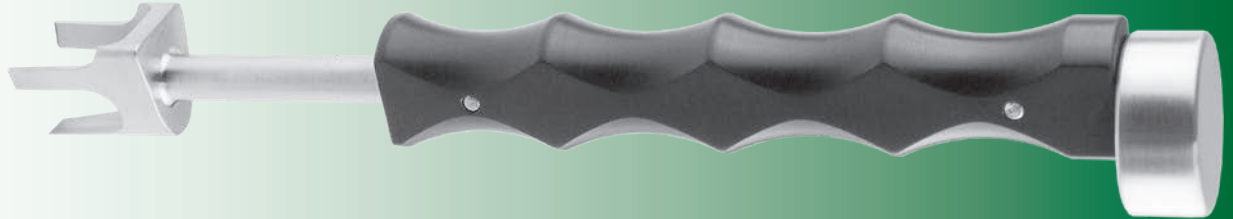
The PCL Protector can be used efficiently right before the tibial cut. It is curved distally so that it can put over the PCL from the top/posterior side and with a few taps, the fanned blade can get around the PCL and into the bone (not more than 5 mm) and "cover" the PCL. The protector is left in place until the tibial cut is made with a saw, which would hit the protector instead of the PCL if it gets too close.



### PRODUCT NO:

3221

Overall Length: 8" (20,3 cm)

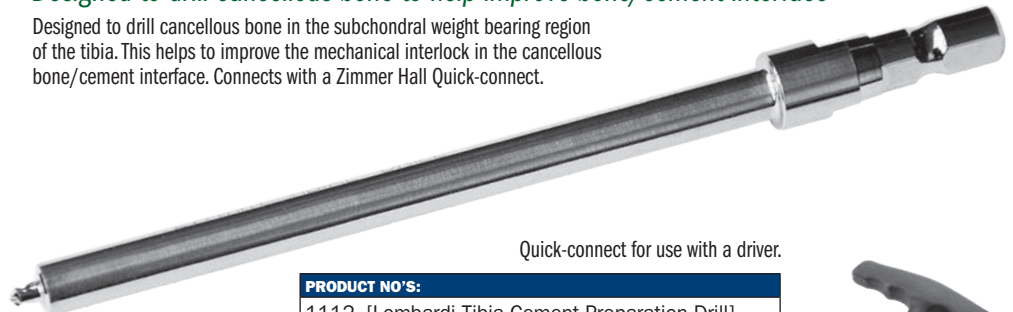


## Lombardi Tibia Cement Preparation Drill

Designed by Adolph Lombardi, MD

*Designed to drill cancellous bone to help improve bone/cement interface*

Designed to drill cancellous bone in the subchondral weight bearing region of the tibia. This helps to improve the mechanical interlock in the cancellous bone/cement interface. Connects with a Zimmer Hall Quick-connect.



Quick-connect for use with a driver.

### PRODUCT NO'S:

1112 [Lombardi Tibia Cement Preparation Drill]

Drill Diameter: 2.7mm

Drill Length: 3mm

Overall Length: 4.75"



8248 [Fixed Driver with Zimmer Hall Quick-connect]

Overall Length: 5.75" (15,6 cm)

Handle Width: 4.625" (11,6 cm)



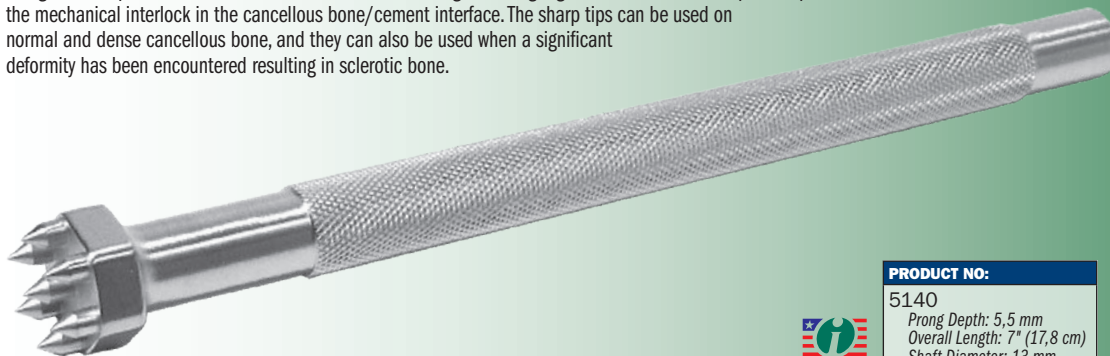
Fixed Driver  
with Zimmer Hall  
Quick-connect

## Woolley Tibia Punch

Designed by D. Woolley, MD

*Designed to impact cancellous bone to help improve bone/cement interface*

Designed to impact cancellous bone in the subchondral weight bearing region of the tibia. This helps to improve the mechanical interlock in the cancellous bone/cement interface. The sharp tips can be used on normal and dense cancellous bone, and they can also be used when a significant deformity has been encountered resulting in sclerotic bone.



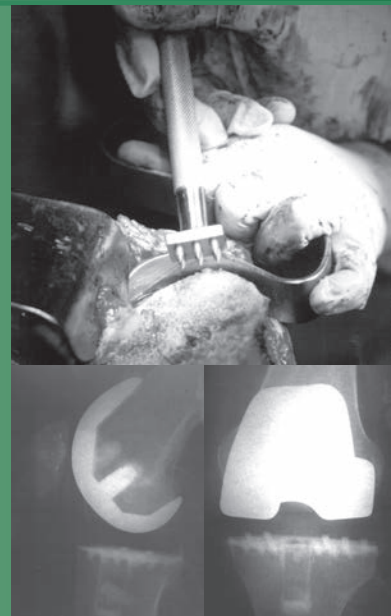
### PRODUCT NO:

5140

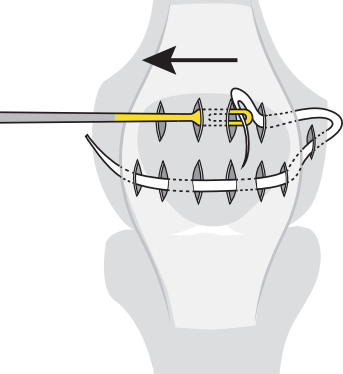
Prong Depth: 5,5 mm

Overall Length: 7" (17,8 cm)

Shaft Diameter: 13 mm







## Kodkani Tissue Elevator Suture/Graft Passer

Designed by Pranjali Kodkani, MD

*Designed for MPFL reconstruction basket weave technique, and helpful for mini-open ligament reconstruction surgeries for graft passage*

### PRODUCT NO:

1114 [No Slot]

Overall Length: 9.75" (24.8 cm)

Handle Length: 4.25" (10.8 cm)

Suture Hole: 2.5 mm x 13 mm

1114-01 [With Slot]

Overall Length: 9.75" (24.8 cm)

Handle Length: 4.25" (10.8 cm)

Suture Hole: 2.5 mm x 13 mm



### Can also be used for:

- ▶ Periosteum/soft tissue elevator or freer
- ▶ Percutaneous passage of tendon/ligament graft/suture
- ▶ Stripping tendon grafts off muscle
- ▶ General orthopedics - repiosteum elevator and spike

### Advantage of the open slot:

- ▶ Convenient feeding and removal of sutures from slot
- ▶ Feeding of multiple thick sutures & sutures with knots
- ▶ Engaging and shuttling grafts with short suture loop ends



## McMaster Medullary Canal Aspirator

Designed by William McMaster, MD

*Designed to aspirate the medullary canal prior to insertion of the solid instrumentation alignment rod to decrease the amount of semi-liquid material present*

Helps evacuate excess fat and marrow content from the medullary canal of a long bone, helping to reduce the pressure and force created during insertion of a metal rod into the canal, which can possibly cause such materials to be embolized into the circulation system (and eventually into the lungs) through open venous structures.

The guide wire serves a dual purpose: To help break up the medullary bone in the proximal metaphysis to facilitate the passage of the fenestrated rod, and after the procedure to assist in cleaning and clearing the cannulated portion of the rod.

Also can be used on the tibial side if an intramedullary guide system is used. Can also be used during femoral rodding procedures for fractures.



### PRODUCT NO:

8075

Overall Length: 19" (48.3 cm)

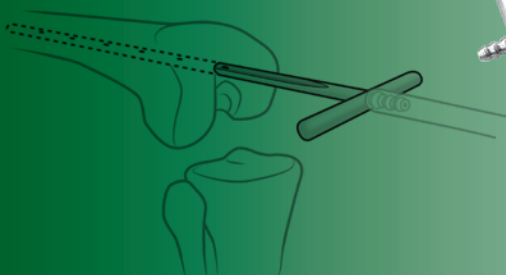
### Also Available Individually:

8075-01 [Canal Tube]

Overall Length: 18" (45.7 cm)

8075-02 [Guide Wire]

Overall Length: 19" (48.3 cm)



## Wilson Double Scalpel Handle

Designed by Ralph Wilson, MD

*Designed to help make a predictable incision in the patellar tendon when harvesting ACL graft material*

The blade offset is 10 millimeters. The tendon graft is harvested from the patella and tibial tubercle including the patellar tendon. Uses scalpel blades that fit a #3 handle size.

### PRODUCT NO:

8207

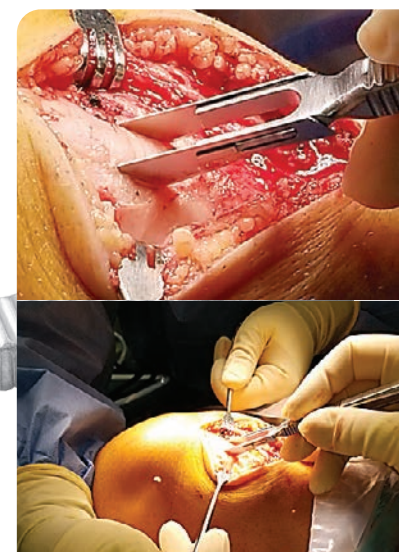
Overall Length: 5.75" (14.6 cm)



Scalpel blades not included.



Scalpel blades not included.



## Durham Curved Osteotome

Designed by Alfred A. Durham, MD

*Increased angle useful for posterior osteophytes of the femoral condyle and the humeral head, as well as anterior acetabular osteophytes*

### PRODUCT NO:

4950

Overall Length: 9" (22,9 cm)

Handle Length: 5" (12,7 cm)

Osteotome Width: .625" (1,6 cm)



*New!*



## Cobb Elevators

*Two Sizes Available  
With or Without Teeth*

Ultra hard titanium nitride coating helps to extend blade life by increasing surface hardness, prolonging sharpness, and resisting chemicals and corrosion.

Available with or  
without teeth



### PRODUCT NO'S:

#### WITH TEETH

3432 [1/2" with Teeth]

Overall Length: 11" (27,9 cm)

Blade Width: 1/2" (13 mm)

3434 [1" with Teeth]

Overall Length: 11" (27,9 cm)

Blade Width: 1" (25,4 mm)

#### WITHOUT TEETH

3436 [1/2" without Teeth]

Overall Length: 11" (27,9 cm)

Blade Width: 1/2" (13 mm)

3438 [1" without Teeth]

Overall Length: 11" (27,9 cm)

Blade Width: 1" (25,4 mm)

## Bradley Periosteal Elevator

Designed by Gary W. Bradley, MD

### PRODUCT NO'S:

4719 [1/2"]

Overall Length: 11" (27,9 cm)

Blade Width: .5" (13 mm)

4720 [3/4"]

Overall Length: 11" (27,9 cm)

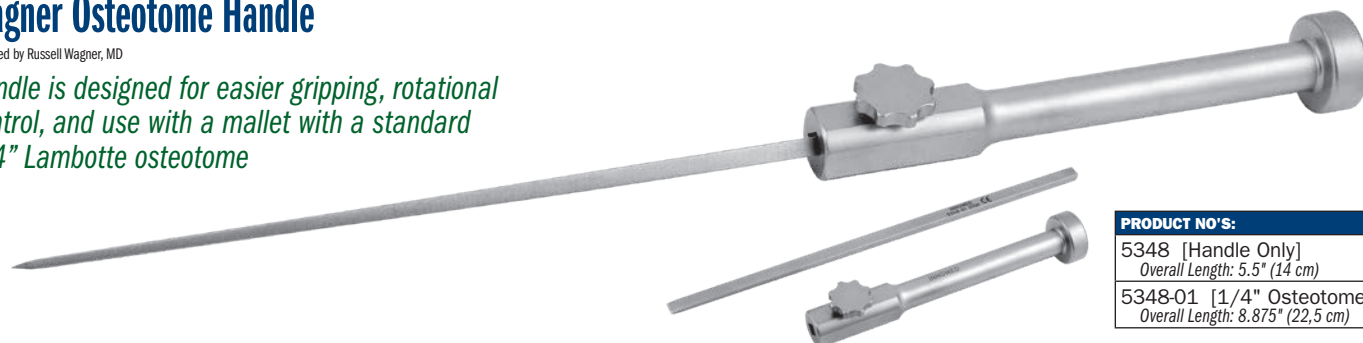
Blade Width: .75" (19 mm)



## Wagner Osteotome Handle

Designed by Russell Wagner, MD

*Handle is designed for easier gripping, rotational control, and use with a mallet with a standard 1/4" Lambotte osteotome*



### PRODUCT NO'S:

5348 [Handle Only]

Overall Length: 5.5" (14 cm)

5348-01 [1/4" Osteotome Only]

Overall Length: 8.875" (22,5 cm)



## Modified Lambotte Osteotomes

*Designed with a striking platform, plus a cross-bar hole to help control rotational stability and assist with removal*

Six (6) sizes available, from 1/4" to 1-1/2" in 1/4" increments. Cross-bar and case included in complete set. Two smallest sizes have an 1/8" hole in which an 1/8" pin can be used as a cross bar (not included).

### PRODUCT NO'S:

5350-00 [Set w/Case]

Also Available Individually:

5350-25\* [1/4"]  
Overall Length: 9" (22,9 cm)  
Osteotome Width: .25" (6,4 mm)

5350-50\* [1/2"]  
Overall Length: 9" (22,9 cm)  
Osteotome Width: .5" (12,7 mm)

5350-75 [3/4"]  
Overall Length: 9" (22,9 cm)  
Osteotome Width: .75" (19 mm)

5350-100 [1"]  
Overall Length: 9" (22,9 cm)  
Osteotome Width: 1" (25,4 mm)



MADE EXCLUSIVELY  
FOR INNOVIMED IN  
GERMANY

5350-125 [1-1/4"]  
Overall Length: 9" (22,9 cm)  
Osteotome Width: 1.25" (31,8 mm)

5350-150 [1-1/2"]  
Overall Length: 9" (22,9 cm)  
Osteotome Width: 1.5" (38,1 mm)

5350-CASE [Case]  
Dimensions: 12.25" x 11.25" x 1"  
(31,1 x 28,6 x 2,5 cm)

5350-CB [Cross Bar]  
Overall Length: 4.375" (11,1 cm)



## Offset Osteotomes

*Designed to remove osteophytes from the posterior femoral condyles during knee arthroplasty*

### Wide Offset Osteotome

Designed by Paul Lotke, MD & Adam Rosen, DO

#### PRODUCT NO:

4920

Blade Width: 18,5 mm

Overall Length: 9" (22,9 cm)



### Lotke Offset Osteotome

Designed by Paul Lotke, MD

#### PRODUCT NO:

4935

Blade Width: 13 mm

Overall Length: 9" (22,9 cm)



### Dennis Offset Osteotome

Designed by Douglas Dennis, MD & Paul Lotke, MD

#### PRODUCT NO:

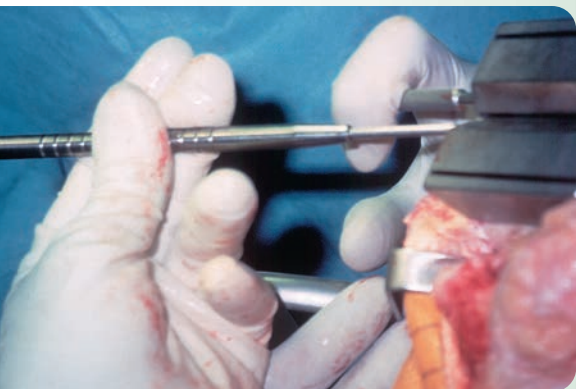
4935-W

Blade Width: 18,5 mm

Overall Length: 9" (22,9 cm)



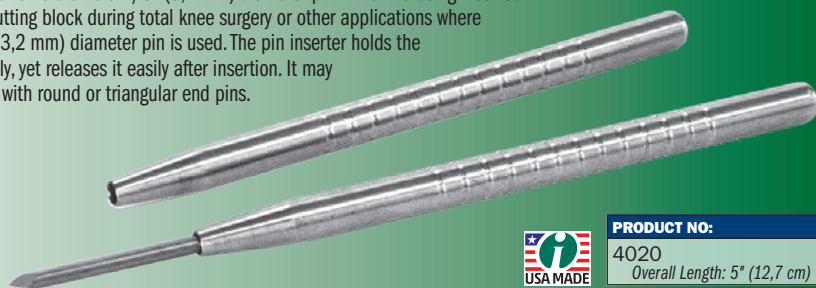




## Pin Inserter

### Used for 1/8" (3,2 mm) diameter pin insertion

Designed to hold onto a 1/8" (3,2 mm) diameter pin while it is being inserted into a cutting block during total knee surgery or other applications where a 1/8" (3,2 mm) diameter pin is used. The pin inserter holds the pin tightly, yet releases it easily after insertion. It may be used with round or triangular end pins.



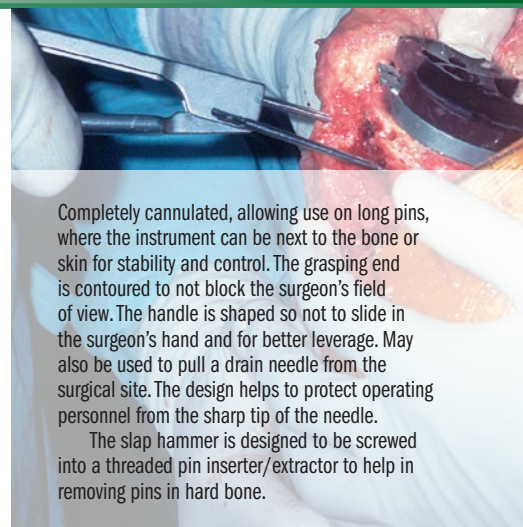
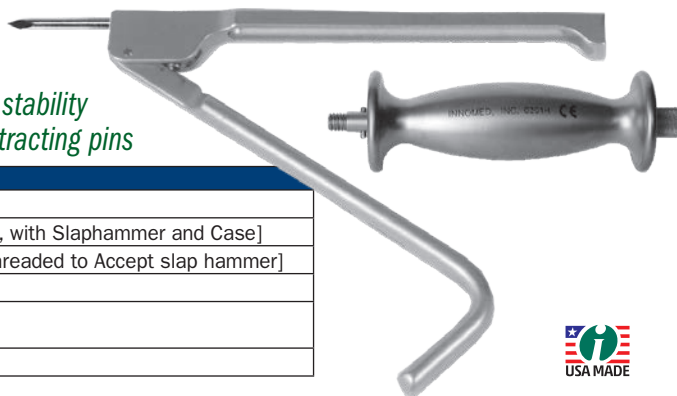
**PRODUCT NO:**  
4020  
Overall Length: 5" (12,7 cm)

## Pin Inserter/Extractor

Helps provide better leverage, stability and control when inserting/extracting pins

### PRODUCT NO'S:

|   |
|---|
| 3020 [For 1/8" (3,2 mm) Pins]                                   |
| 3020-T-00 [For 1/8" (3,2 mm) Pins, with Slaphammer and Case]    |
| 3020-T [For 1/8" (3,2 mm) Pins, Threaded to Accept slap hammer] |
| 3030 [For 3/16" (4,8 mm) Pins]                                  |
| 3040 [Slap Hammer]<br>Thread: 5/16"x 18                         |
| 1015 [Sterilization Case]                                       |



Completely cannulated, allowing use on long pins, where the instrument can be next to the bone or skin for stability and control. The grasping end is contoured to not block the surgeon's field of view. The handle is shaped so not to slide in the surgeon's hand and for better leverage. May also be used to pull a drain needle from the surgical site. The design helps to protect operating personnel from the sharp tip of the needle.

The slap hammer is designed to be screwed into a threaded pin inserter/extractor to help in removing pins in hard bone.



## Pin Driver and Threaded Bone Pins

Quick-connect version for use with a driver.



Fixed Driver with Zimmer Hall Quick-connect

### PRODUCT NO'S:

|   |
|---|
| <b>1/8" (3,2 mm) Pins - Packages of 10:</b> |
| 1287 [85 mm Threaded Bone Pin]              |
| 1290 [65 mm Threaded Bone Pin]              |
| 1297 [55 mm Threaded Bone Pin with Collar]  |

### PRODUCT NO'S:

|   |
|---|
| 1206 [Pin Driver w/Zimmer Hall Quick-connect]<br>Overall Length: 5" (12,7 cm)   |
| 1205 [Pin Driver]<br>Overall Length: 3.75" (9,5 cm)   |
| 8248 [Fixed Driver with Zimmer Hall Quick-connect]<br>Overall Length: 5.75" (15,6 cm)<br>Handle Width: 4.625" (11,6 cm) |

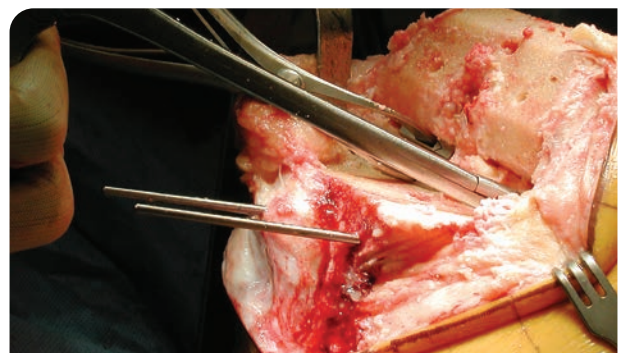


## Shouldered Bone Pins

### PRODUCT NO'S:

#### Packages of 10:

|   |
|---|
| 1270 [1/8"]<br>Diameter: 3,2 mm (.125")<br>Overall Length: 70 mm<br>Shoulder-to-tip: 45 mm  |
| 1271 [1/16"]<br>Diameter: 1,6 mm (.062")<br>Overall Length: 70 mm<br>Shoulder-to-tip: 45 mm |







## Stanton Straight Pin Removal Pliers

Designed by John Stanton, MD

### PRODUCT NO:

1893

Overall Length: 6.375" (16,2 cm)

Jaw Length: 1.62 (4,1 cm)

Instrument Width: 1 cm



## Ring Curettes



### PRODUCT NO'S:

#### Straight Shaft

Overall Length: 8.75" (22,2 cm)

5150 [3 mm, Straight]  
Ring Diameter: 3 mm



5152 [6 mm, Straight]  
Ring Diameter: 6 mm

5154 [8 mm, Straight]  
Ring Diameter: 8 mm



### PRODUCT NO'S:

#### Bent Shaft

Overall Length: 8.625" (21,9 cm)

5156 [3 mm, Bent]  
Ring Diameter: 3 mm



5157 [6 mm, Bent]  
Ring Diameter: 6 mm

5158 [8 mm, Bent]  
Ring Diameter: 8 mm

## Sarrat Toothed Curettes

Designed by Khaled Sarraf, MD

Forward, straight, and reverse bent toothed curettes designed to aid in aid in all types of joint arthroplasty surgery, especially in scraping any articular chondral islands within the acetabulum during THA preparation

- ▶ Can also be used for the femoral canal in cemented and uncemented THA
- ▶ Valuable aid in revision arthroplasty (hip, knee, shoulder and ankle) for cement curettage
- ▶ Useful tool in hip and knee primary arthroplasty as well as shoulder, elbow and ankle arthroplasty procedures



### PRODUCT NO'S:

5174-00 [Set]

Set Includes/ Available Separately:

5174-F [Forward]

Overall Length: 11.5" (29,2 cm)

Handle Length: 5.5" (14 cm)

Angled Down: 30°

5174-R [Reverse]

Overall Length: 11.5" (29,2 cm)

Handle Length: 5.5" (14 cm)

Angled Up: 30°

5174-S [Straight]

Overall Length: 11.5" (29,2 cm)

Handle Length: 5.5" (14 cm)



## Chandran Bent Serrated Curette

Designed by Rama E. Chandran, MD

Serrated design allows for easier removal of cancellous bone in the proximal femur in total joint arthroplasty

### PRODUCT NO:

5171

Overall Length: 11.75" (29,8 cm)

Handle Length: 5.5" (14 cm)

Cup Size: 7 mm X 12 mm



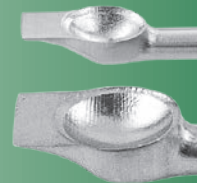
## Desai Curette Osteotomes

Designed by Sarang Desai, DO

*Designed to remove bone and cartilage, helpful for preparing joint surfaces for fusion, allowing easy removal of osteophytes and cartilage without having to switch instruments*

| PRODUCT NO'S:   |  |
|---|--|
| 5241 [5 mm]<br>Overall Length: 8.25" (21 cm)<br>Handle Length: 4.25" (10,8 mm)<br>Cup: 5 x 6 mm<br>Osteotome Width: 3.5 mm<br>Osteotome Length: 3.5 mm from edge of cup | 5242 [8 mm]<br>Overall Length: 8.25" (21 cm)<br>Handle Length: 4.25" (10,8 mm)<br>Cup: 8 x 10 mm<br>Osteotome Width: 6.5 mm<br>Osteotome Length: 3 mm from edge of cup |

The osteotome portion also can be used to "feather" the subchondral surface to expose bleeding bone. It is also useful in instances of obtaining autograft, as it can be used to create a bone window and then remove cancellous bone.

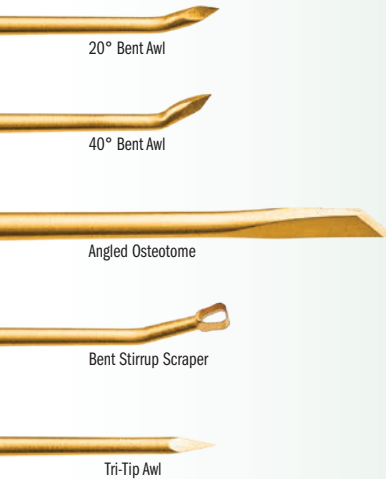


## Periosteal Elevator

*Designed for better control*

Designed with a curved end for easier use, and sharper sides for ease of elevating and stripping. The handle is designed for better control.

| PRODUCT NO'S:  |   |
|--|---|
| 3450 [Curved]<br>Overall Length: 7.5" (19,1 cm)<br>Handle Length: 4.5" (11,4 cm)<br>Blade Size: 16 x 13 mm | 3455 [Straight]<br>Overall Length: 7.75" (19,7 cm)<br>Handle Length: 4.5" (11,4 cm)<br>Blade Size: 19 x 14 mm |



## Nordt Precision Micro Fracture Set

| PRODUCT NO'S:   |  |
|---|--|
| 8025-00 [Complete Set]  |  |
| Also available individually:  |  |
| 8025-01 [20° Bent Awl]<br>Overall Length: 10" (25,4 cm)             |  |
| 8025-02 [40° Bent Awl]<br>Overall Length: 10" (25,4 cm)             |  |
| 8025-03 [Angled Osteotome]<br>Overall Length: 10.875" (27,6 cm)     |  |
| 8025-04 [Bent Stirrup Scraper]<br>Overall Length: 10.125" (25,7 cm) |  |
| 8025-05 [Tri-Tip Awl]<br>Overall Length: 10" (25,4 cm)              |  |
| 8025-CASE [Case]  |  |



Designed by William E. Nordt, III, MD

Ultra hard titanium nitride coating helps to extend life by increasing surface hardness, prolonging sharpness, and resisting chemicals and corrosion.

- ▶ Precise microfracture points
- ▶ Helps create sharp cartilage shoulders



## Whelan Double-Ended Suture Wire Passer

Designed by E. J. Whelan, III, MD

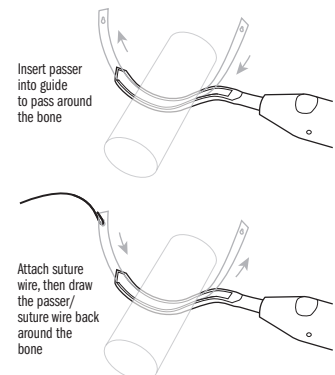
| PRODUCT NO'S:  |  |
|--|--|
| 8300-00 [Set]  |  |
| Also available individually:   |  |
| 8300-01 [Passer Guide]<br>Overall Length: 8.125" (20,6 cm)<br>Outside Width: 9 mm<br>Inside Groove Width: 6,5 mm |  |
| 8300-02 [Passer]<br>Overall Length: 7.5" (19,1 cm)<br>Width: 4,6 mm  |  |
| 1025 [Sterilization Case]  |  |



Set includes Passer Guide, two Passers, and a sterilization case.



The passer guide is placed around the bone, and the thin malleable passer is inserted at the handle end and follows the grooved passer around. The suture wire (up to 18 gauge) is attached to the keyholed end of the passer, which can then be reversed out of the passer, drawing the suture wire around the bone.





## Redler Bone Clamp with Wire Guide

Designed by M.R. Redler, MD

*Designed to hold bony fragments in place for placement of guide wires*

Can be used for:

- ▶ Placement of guide wires during the open reduction and internal fixation of a patella fracture
- ▶ Placement of pins across distal radius fractures or across carpal bones
- ▶ Arthroscopically assisted fixation in the wrist
- ▶ Fracture fragments about the elbow

### PRODUCT NO'S:

1885-45

For Pins up to .045" (1.1 mm)  
Overall Length: 9.5" (24.1 cm)  
Jaw opens to: 3.5" (8.9 cm)

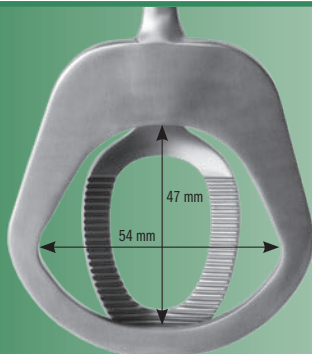
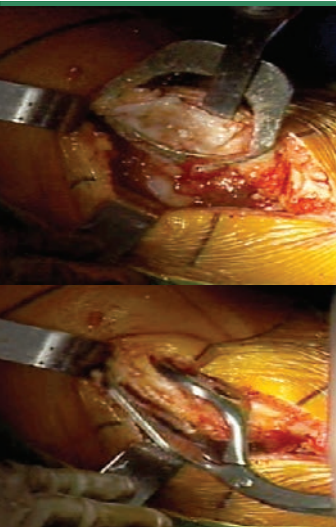
1885-62

For Pins up to .062" (1.6 mm)  
Overall Length: 9.5" (24.1 cm)  
Jaw opens to: 3.5" (8.9 cm)



Two sizes available:

For use with 0.045" (1.1 mm)  
or 0.062" (1.6 mm) K-wires.



## Scott Patella Resection Guide/Clamp

Designed by James Scott, MD

*Helps move the tendons anteriorly, giving the surgeon a good method of holding the patella stable for resection*

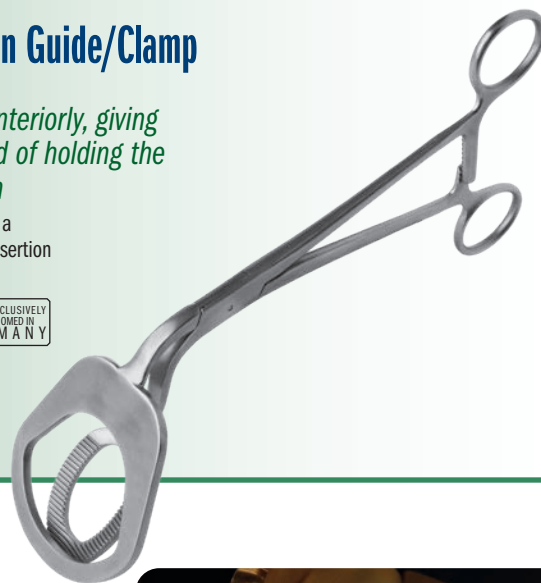
Can be used as a holding device, or as a guide if the surgeon uses the tendon insertion to the patella as level for resection.

### PRODUCT NO:

1164

Overall Length: 10" (25.4 cm)

MADE EXCLUSIVELY  
FOR INNOVIMED IN  
GERMANY



## Patella Grasping Forceps

Designed by S. David Stulberg, MD

*Bent handle on forceps helps the surgeon to evert the patella during minimally invasive knee surgery*



### PRODUCT NO:

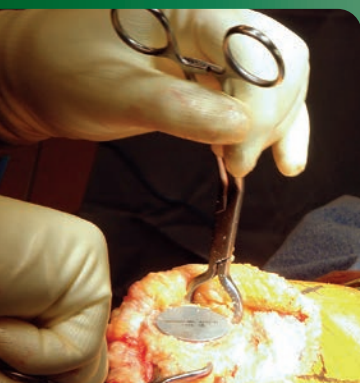
4250

Overall Length: 6.75" (17.1 cm)

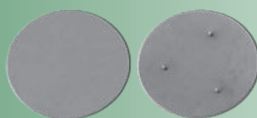
MADE EXCLUSIVELY  
FOR INNOVIMED IN  
GERMANY



Normally two forceps are used (sold individually)



Flat topside, with three small spikes underneath



## Patella Cover Plate

Designed by S. David Stulberg, MD

*Protects the cut surface of the patella during minimally invasive knee surgery*

Sharp spikes help hold the plates in place. Lessens the chance of weakening the patella, as pre-drilling is not necessary.

### PRODUCT NO'S:

4230-00 [Set of 4 Sizes]

4230-01 [Small] 35 mm x 31 mm

4230-02 [Medium] 36 mm x 32 mm

4230-03 [Large] 37 mm x 33 mm

4230-04 [Extra Large] 38 mm x 34 mm

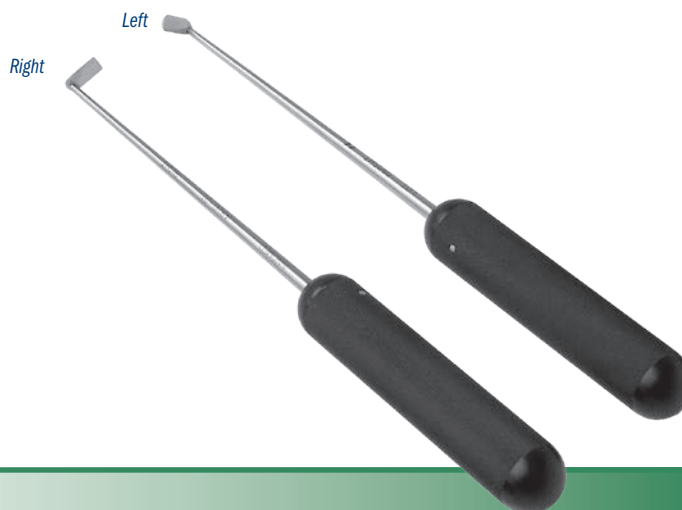


## Engel Cement Scrapers

Designed by Gerard A. Engel, MD

*Right and left design used to scrape cement from around and behind knee implants*

| PRODUCT NO'S:   |   |
|-----------------|---|
| 4920-01 [Right] | Scraper Head: 5 mm x 9 mm<br>Overall Length: 8.5" (21,6 cm) |
| 4920-02 [Left]  | Scraper Head: 5 mm x 9 mm<br>Overall Length: 8.5" (21,6 cm) |



## Scott Uni & Total Knee Cement Removing Curette

Designed by Richard D. Scott, MD

*Sized, shaped and angled 90° to help with retrieval of posteriorly extruded cement behind the tibial component in both total and unicompartmental knee arthroplasty*

Ultra hard titanium nitride coating helps to extend curette life by increasing surface hardness, prolonging sharpness, and resisting chemicals and corrosion, while helping to eliminate metal transfer and protect the implant surface.



| PRODUCT NO: |  |
|-------------|--|
| 4247        | Overall Length: 9.625" (24,4 cm)<br>Overall Length: 5.25" (13,3 cm)<br>Cup Size: 4/0 |

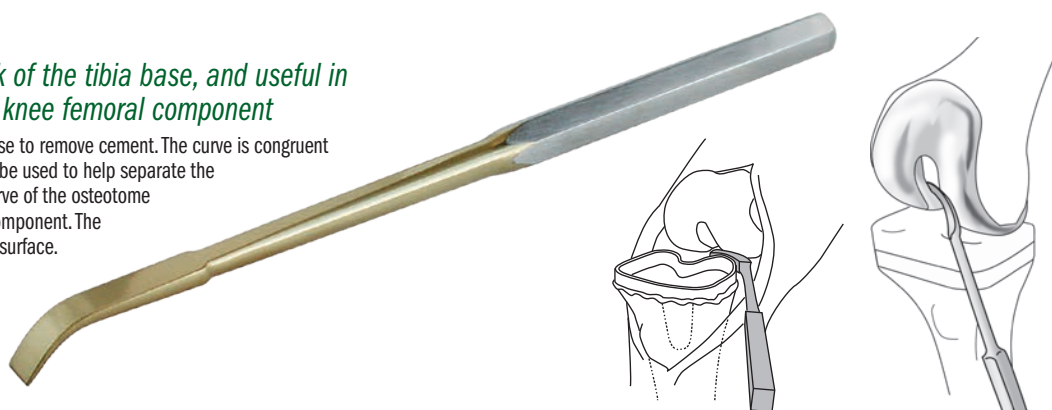


## Curved Cement Osteotome

*Helps remove cement around the back of the tibia base, and useful in the femoral notch during removal of a knee femoral component*

Designed to be inserted around the back of the tibia base to remove cement. The curve is congruent with most tibia bases. During revision knee surgery, can be used to help separate the prosthesis/bone or prosthesis/cement interface. The curve of the osteotome allows it to be used in the femoral notch of a femoral component. The osteotome is nitrate coated to help protect the implant surface.

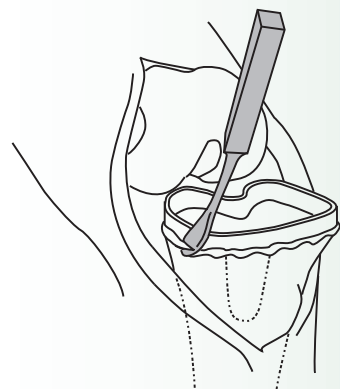
| PRODUCT NO: |  |
|-------------|--|
| 5220        | Overall Length: 6.75" (17,1 cm)<br>Handle Length: 3" (7,6 cm)<br>Blade Width: 6,8 mm |



## Cement Remover

*Helps remove unhardened cement around femoral and tibial knee components*

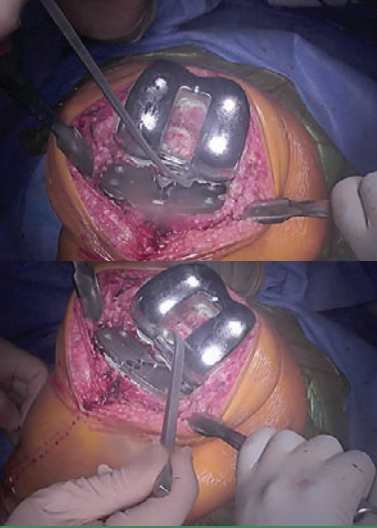
Designed with a sharper face to help remove unhardened cement around femoral and tibial knee components. The remover is nitrate coated to help protect implant surfaces.



| PRODUCT NO: |   |
|-------------|---|
| 5230        | Overall Length: 7.25" (18,4 cm)<br>Handle Length: 5" (12,7 cm)<br>Blade Width: 5 mm |







## Bacastow Femoral Cement Osteotome

Designed by David Bacastow, MD

*Uniquely shaped osteotome designed to help trim away cement from around a femoral knee component*

### PRODUCT NO:

5234

Overall Length: 9.25" (23,5 cm)

Width: 6,5 mm

Tongue Length: 7 mm



## Bozeman Cement Trimmer

Designed by Daniel M. Gannon, MD

The tool has a blunt blade tip on one end to help with separation of the trimmed cement. The angled curette end helps gather the trimmed cement. The thin shank and angled curette can reach into tight spaces such as the back of the implants to remove excess cement. The ends are titanium nitrite coated to help eliminate metal transfer.



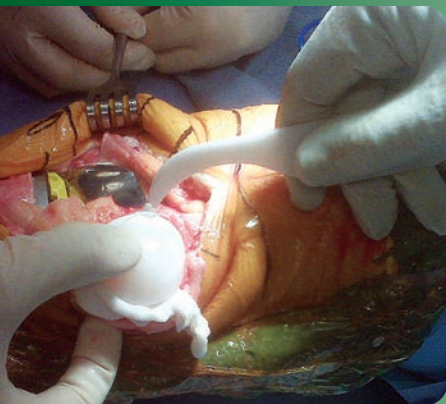
*Combines the two most common cement trimming tools into one*

### PRODUCT NO:

5245

Overall Length: 8.5" (21,6 cm)

MADE EXCLUSIVELY  
FOR UNIMED IN  
GERMANY



## Seachris Delrin Cement Scraper

Designed by Timothy Seachris

*Reusable delrin scraper is designed to help remove cement around a knee or hip prosthesis*

### PRODUCT NO:

5218

Overall Length: 5" (12,7 cm)

Thickness: 1/8" (3 mm)



## Robb Cement Curette

Designed by William Robb, MD

*Designed to help remove cement around a hip or knee prosthesis*

Made of Delrin



### PRODUCT NO:

5635

Overall Length: 8" (20,3 cm)

Freer End: 5 mm

Cup End: 10 mm



## Sarraf TiN Coated Cement Removal Forceps

Designed by Khaled M. Sarraf, MD

Ultra hard titanium nitride coating helps to extend forceps life by increasing surface hardness, prolonging sharpness, and resisting chemicals and corrosion, while helping to eliminate metal transfer and protect the implant surface.

### PRODUCT NO'S:

5039 [Straight]  
Overall Length: 6" (15,2 cm)

5041 [Angled]  
Overall Length: 6.125" (15,6 cm)



- ▶ The curved semicircular tip is congruent to most tibial plates and femoral condylar implants, helping to facilitate removal of excess cement, especially at the tight posterior aspect
- ▶ The small scoop-end tip assists in excising unset cement
- ▶ Ultra hard titanium nitride coating helps to extend curette life by increasing surface hardness, prolonging sharpness, and resisting chemicals and corrosion, while helping to eliminate metal transfer and protect the implant surface

## Sarraf Cement Trimmer

Designed by Khaled M. Sarraf, MD

*Two-in-one instrument designed for cement removal during arthroplasty surgery*

### PRODUCT NO:

5212  
Overall Length: 7.75" (19,7 cm)



## Sarraf Spearhead Cement Exciser

Designed by Khaled M. Sarraf, MD

*Two-in-one instrument designed for cement removal during arthroplasty surgery*

### PRODUCT NO:

5211  
Overall Length: 7.75" (19,7 cm)



- ▶ The curved semicircular tip is congruent to most tibial plates and femoral condylar implants, helping to facilitate removal of excess cement, especially at the tight posterior aspect
- ▶ The spearhead tip assists in excising and shaping the unset cement
- ▶ Ultra hard titanium nitride coating helps to extend curette life by increasing surface hardness, prolonging sharpness, and resisting chemicals and corrosion, while helping to eliminate metal transfer and protect the implant surface

## Cement Packer & Trimmer

Designed by Harlan C. Amstutz, MD

### PRODUCT NO:

4995  
Overall Length: 9.75" (24,8 cm)

MADE FOR INNOMED IN GERMANY



## Gelbke Freer Cement Trimmer/Nerve Hook with TiN Coating

Designed by Martin K. Gelbke, MD

*Designed to facilitate cement removal during total and partial knee replacement*

- Consists of a freer elevator on one end and a nerve hook on the other
- Nerve hook accesses "tough to reach" corners of the knee
- Particularly useful for use with an ultra-congruent polyethylene insert, where trial liners are typically not used, once the final components have been placed
- Ultra hard titanium nitride coating helps to extend life by increasing surface hardness, prolonging sharpness, and resisting chemicals and corrosion

### PRODUCT NO:

5007

Overall Length: 9.25" (23,5 cm)

Blade Width at End: 5 mm

Hook Depth: 5 mm



## Long Bonney Tissue Forceps

*Extra length—3" (7,6 cm) more than standard—allows for use in deep wound areas*



### PRODUCT NO:

5040

Overall Length: 10" (25,4 cm)

MADE EXCLUSIVELY  
FOR INNOMED IN  
GERMANY



## Charnley Type Tissue Needle Forceps

Designed by Amal Das Jr., MD

*Helpful for wound closure in deep areas with fascia under tension such as hip or knee replacement*

Can also help retrieve a needle in a tight area.

### PRODUCT NO:

1165

Overall Length: 6.875" (17,5 cm)

MADE EXCLUSIVELY  
FOR INNOMED IN  
GERMANY

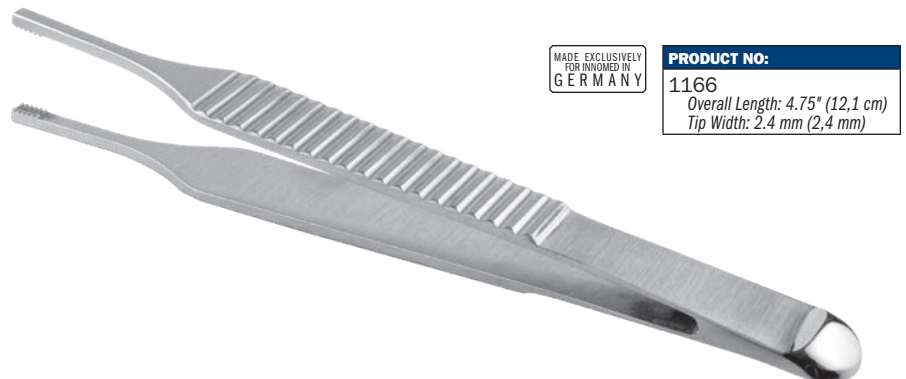


## Adson Forceps with Cobb Elevator End

Designed by Oscar Castro-Aragon, MD

*Has the advantages of having a Cobb tip at the end of an Adson forceps*

Allows the opportunity to do soft tissue dissection, cleaning of the bone or bone fragments in a fracture, push bone fragments to hold a reduction in a fracture, separate soft tissue, and turn it around to pick up tissue without having to switch instruments back and forth.



MADE EXCLUSIVELY  
FOR INNOMED IN  
GERMANY

### PRODUCT NO:

1166

Overall Length: 4.75" (12,1 cm)

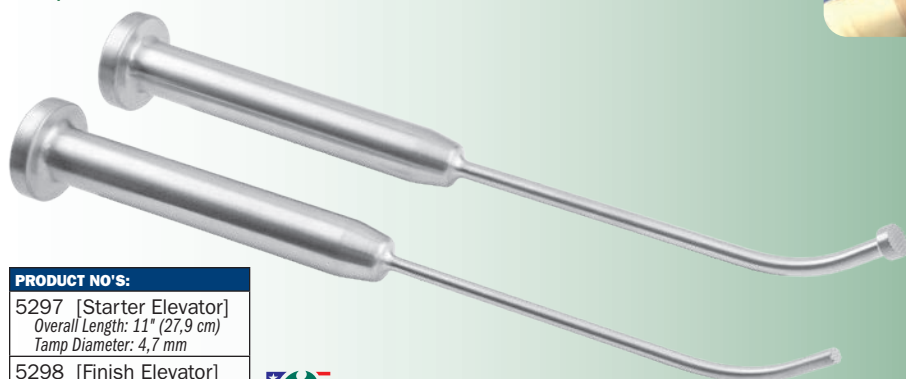
Tip Width: 2.4 mm (2,4 mm)



## Bacastow Tibial Plateau Elevators

Designed by David Bacastow, MD

*Designed to help with indirect reduction of a depressed tibial plateau fracture, and can be used with arthroscopic visualization and percutaneous fixation*



### PRODUCT NO'S:

5297 [Starter Elevator]  
Overall Length: 11" (27,9 cm)  
Tamp Diameter: 4,7 mm

5298 [Finish Elevator]  
Overall Length: 11" (27,9 cm)  
Tamp Diameter: 10,4 mm



Finish  
10.4 mm

Starter  
4.7 mm

## Malleable Bone Tamps

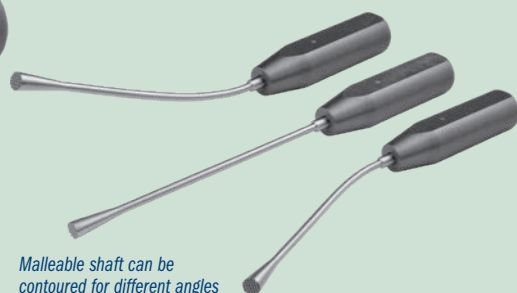
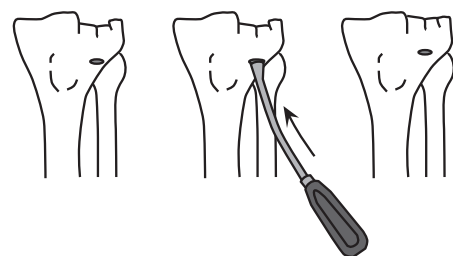
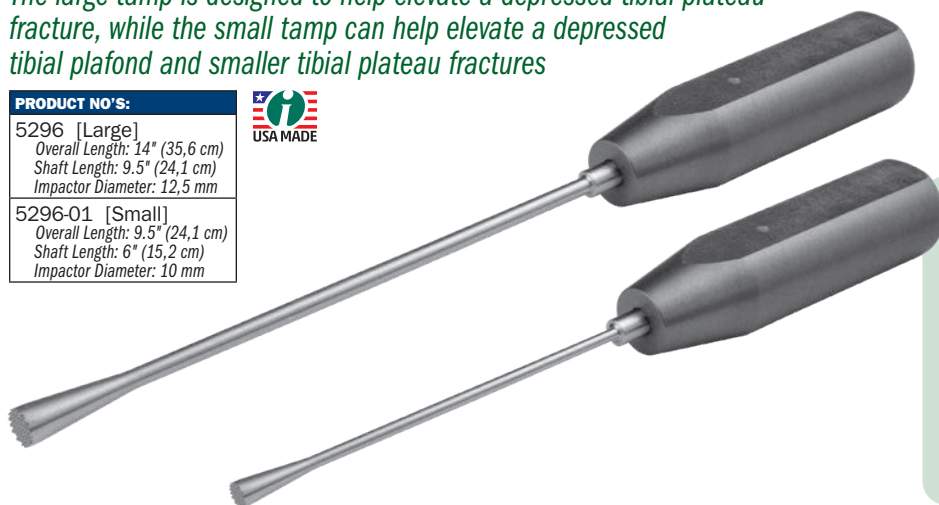
Modified by Serge Kaska, MD

*The large tamp is designed to help elevate a depressed tibial plateau fracture, while the small tamp can help elevate a depressed tibial plafond and smaller tibial plateau fractures*

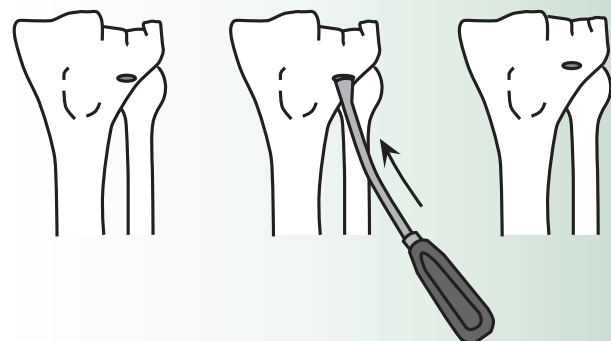
### PRODUCT NO'S:

5296 [Large]  
Overall Length: 14" (35,6 cm)  
Shaft Length: 9.5" (24,1 cm)  
Impactor Diameter: 12,5 mm

5296-01 [Small]  
Overall Length: 9.5" (24,1 cm)  
Shaft Length: 6" (15,2 cm)  
Impactor Diameter: 10 mm



Malleable shaft can be  
contoured for different angles



## Sandman Curved Bone Punch

Designed by Geoffrey A. Sandman, MD

*Designed to help elevate a depressed tibial plateau fracture*



### PRODUCT NO:

5305  
Overall Length: 14" (35,6 cm)  
Shaft Length: 9.5" (24,1 cm)  
Impactor Diameter: 12,5 mm (.5")



# Universal Bone Grafting/Impacting Forceps

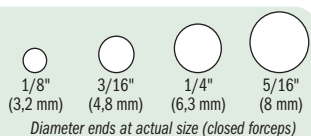
Designed by J.A. Amis, MD

*Bone graft can be grasped, placed & impacted without changing hands or instruments*

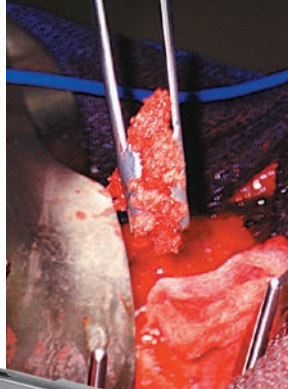
The forceps are designed with grasping ends for delivery of bone graft. When the graft is in place, the forceps are closed, which forms the ends into an impacting punch. A striking platform is attached to the end of the forceps for tapping and tamping the graft. Four end diameters are available in two lengths.

MADE EXCLUSIVELY  
FOR INNOVED INC.  
GERMANY

| PRODUCT NO'S:                       |                                     |
|-------------------------------------|-------------------------------------|
| Short: 6" (15,2 cm) Length          | Long: 10" (25,4 cm) Length          |
| 5010-01 1/8" (3,2 mm) Diameter End  | 5050-01 1/8" (3,2 mm) Diameter End  |
| 5010-02 3/16" (4,8 mm) Diameter End | 5050-02 3/16" (4,8 mm) Diameter End |
| 5010-03 1/4" (6,3 mm) Diameter End  | 5050-03 1/4" (6,3 mm) Diameter End  |
| 5010-04 5/16" (8 mm) Diameter End   | 5050-04 5/16" (8 mm) Diameter End   |



*When the forceps are closed, they form into an impacting punch*



**Stainless**  
Impactor Sizes



**Delrin**  
Impactor Sizes



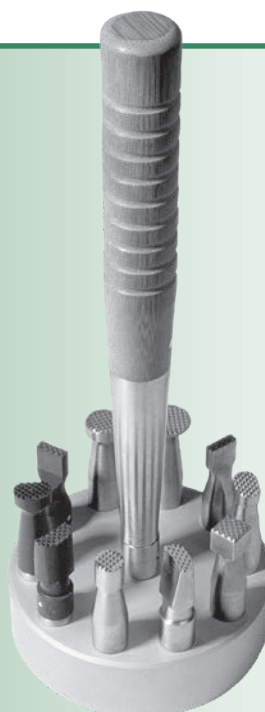
**PRODUCT NO:**  
5370 [Complete Set]  
Overall Handle Length: 8" (20,3 cm)  
Grip Length: 4.5" (11,4 cm)  
Exposed Impactor Head Lengths: 1.45" (3,7 cm)  
Base Diameter: 3.5" (8,9 cm)



## Modular Impactor Set

*Makes multiple impactor heads easily visible and available*

Designed to have available to the operating surgeon multiple types of impactors utilizing one handle. The rack uses less space and allows the surgeon to quickly see the designs available. The impactors are supplied with stainless steel tips for bone and delrin tips which can be used against an implant for slight placement adjustments.



## Ortho Impactors

| PRODUCT NO'S:                |                       |
|------------------------------|-----------------------|
| Overall Length: 9" (22,9 cm) |                       |
| Shaft Diameter: 9 mm         |                       |
| 5331                         | [11 x 4 mm Rectangle] |
| 5332                         | [12 x 7 mm Rectangle] |
| 5333                         | [12 mm Tapered]       |
| 5334                         | [9 mm Square]         |
| 5335                         | [15 mm Round]         |
| 5336                         | [12 mm Round]         |
| 5337                         | [9 mm Round]          |



**New!**

## Grant TKA Anatomic Bone File Set

Designed by Richard E. Grant, MD

*A bone rasp and plumb rod set designed for TKA tibial cut surface preparation*

Plumb rod fits into the handle of each bone rasp: 0°, 2° Left, and 2° Right.

| PRODUCT NO'S:                              |                  |
|--|------------------|
| 6906-00                                    | [Set]            |
| <b>Set Includes/ Available Separately:</b> |                  |
| 6901-01                                    | [Plumb Rod]      |
| Overall Length: 14" (35,6 cm)              |                  |
| 6906-02                                    | [0° (Flat) Rasp] |
| Overall Length: 6.375" (16,2 cm)           |                  |
| Rasp Platform Length: 1.7" (4,3 cm)        |                  |
| Rasp Platform Width: 2.7" (6,9 cm)         |                  |
| 6906-03                                    | [2° Right Rasp]  |
| Overall Length: 6.375" (16,2 cm)           |                  |
| Rasp Platform Length: 1.7" (4,3 cm)        |                  |
| Rasp Platform Width: 2.7" (6,9 cm)         |                  |
| 6906-04                                    | [2° Left Rasp]   |
| Overall Length: 6.375" (16,2 cm)           |                  |
| Rasp Platform Length: 1.7" (4,3 cm)        |                  |
| Rasp Platform Width: 2.7" (6,9 cm)         |                  |

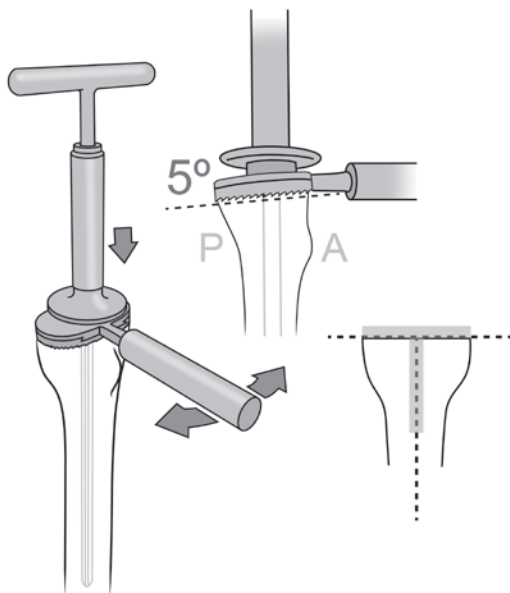


## Colwell TKA 5° Tibial Rasp Assembly

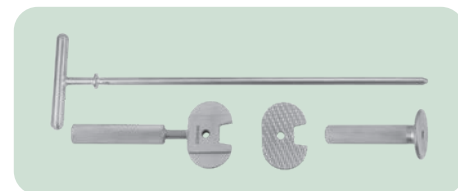
Designed by Clifford W. Colwell Jr., MD

*A tibial planing tool with a universal design to help improve tibial cut alignment and flatness by smoothing out imperfections intraoperatively, helping to ensure the tibial bone surface is cut correctly in coronal and sagittal planes*

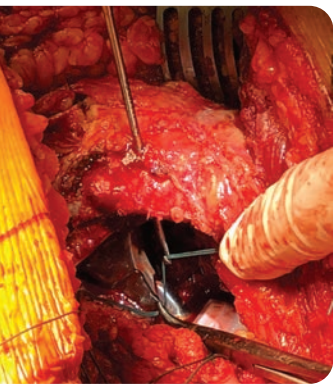
After the planer rasp handle/plate unit is threaded onto the intramedullary rod, the handle is moved back and forth through an arc while the cutting surface of the planer is held against the tibial bone, to realign the cut and to remove any imperfections. For use with any primary or revision knee system when an intramedullary cutting guide is being used.



| PRODUCT NO'S:                  |                      |
|--------------------------------|----------------------|
| 6900-00                        | [Complete Assembly]  |
| Overall Length: 15" (38,1 cm)  |                      |
| <b>Set includes:</b>           |                      |
| 6901-01                        | [Rasp Handle]        |
| Overall Length: 6.283" (16 cm) |                      |
| Handle Length: 3.625" (9,2 cm) |                      |
| 6901-02                        | [Rasp Plate]         |
| Plate Width: 2.65" (7,7 cm)    |                      |
| Plate Depth: 1.75" (4,3 cm)    |                      |
| 6902                           | [T-Handle Canal Rod] |
| Overall Length: 15" (38,1 cm)  |                      |
| T-Handle Width: 4" (10,1 cm)   |                      |
| 6903                           | [Handle Grip]        |
| Overall Length: 4" (10,1 cm)   |                      |







## Straight Suture Passer

Designed by Brian T. Maurer, MD

*Designed to help pass suture through bone*

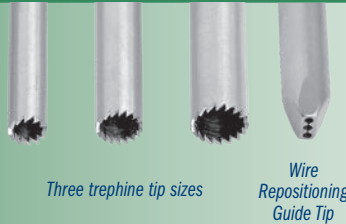
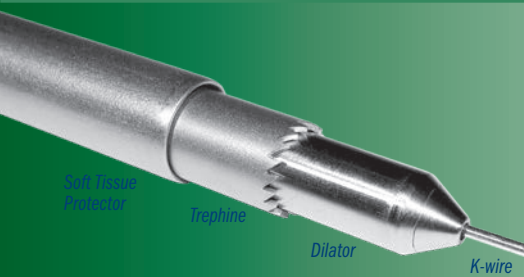
### PRODUCT NO:

1111

Overall Length: 8.125" (20,6 cm)

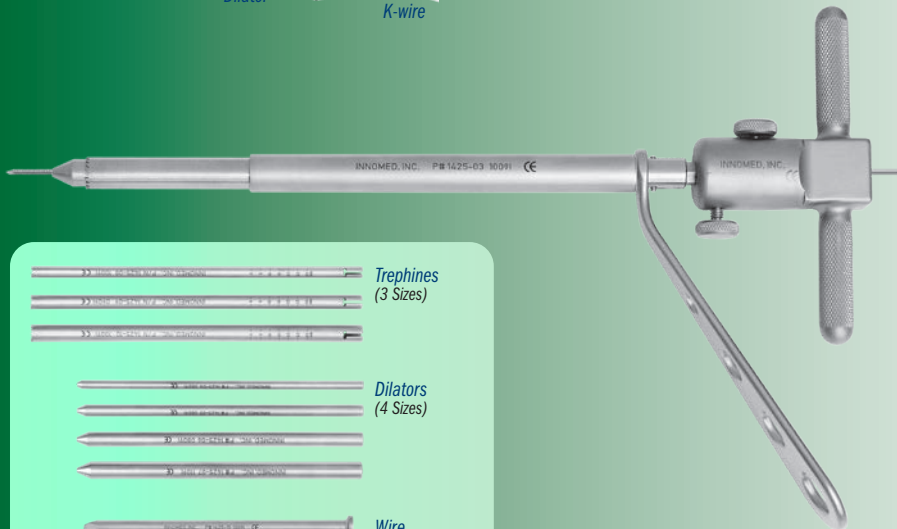
Handle Length: 4.25" (10,8 cm)

Shaft Diameter: 2,5 mm



Three trephine tip sizes

Wire  
Repositioning  
Guide Tip



## Cheng Biopsy Trephine System

Designed by Edward Cheng, MD

*Cannulated T-handle and trephines allow use of a standard 1.6 mm (.062") threaded K-wire to help facilitate grasping and removal of a core bone sample for biopsy or core decompression*

- ▶ Allows use of trephine at oblique angles to bone surface by using an anchoring K-wire and cannulated trephine
- ▶ Avoids "skipping" of trephine teeth on bone surface
- ▶ Facilitates optimal approach angle and direction of trephine
- ▶ Variety of core diameters yields bone samples of sufficient size for pathology
- ▶ Adapters allow for use of a power drill
- ▶ Minimally invasive – soft tissue sleeve protects surrounding structures and tissue
- ▶ Can also be used for bone graft harvesting
- ▶ Repositioning guide allows easy adjustment of targeting K-wire

### PRODUCT NO'S:

1425-00 [Complete Set with Case]

### Set Includes/Available Separately:

1425-01 [Soft Tissue Protector – Small]

1425-02 [Soft Tissue Protector – Medium]

1425-03 [Soft Tissue Protector – Large]

1425-04 [Dilator – 4.75 mm]

1425-05 [Dilator – 6.25 mm]

1425-06 [Dilator – 7.75 mm]

1425-07 [Dilator – 9.25 mm]

1425-08 [Trephine – Small]

Internal Diameter: 5mm

Overall Length: 7.125" (18,1 cm)

1425-09 [Trephine – Medium]

Internal Diameter: 6.5 mm

Overall Length: 7.125" (18,1 cm)

1425-10 [Trephine – Large]

Internal Diameter: 8 mm

Overall Length: 7.125" (18,1 cm)

1425-11 [Drive End – Small]

1425-12 [Drive End – Medium]

1425-13 [Drive End – Large]

1425-14 [Driver Retraction Handle]

1425-14-B-COMP [Handle Retaining Screw]

1425-15 [3-Hole Wire Repositioning Guide]

1425-Case [Case]



Complete Set in Case



K-wire not included.



**PRODUCT NO:**

8989

Overall Length: 6.25" (15,9 cm)  
Handle Length: 3.25" (8,3 cm)  
Funnel Diameter at Top: 3" (7,6 cm)  
Funnel Flow-thru Diameter: 11 mm



## Desai Surgical Funnel

Designed by Sarang Desai, DO

*Helps with control and placement of bone graft or antibiotic beads*

Made from surgical grade stainless steel (for sterilization).



Profile View



## Surgical Spoon

Designed by David Scott, MD

*Very useful for the application of methylmethacrylate bone cement*

Made from surgical grade stainless steel (for sterilization purposes).

**PRODUCT NO:**

8209

Overall Length: 5.875" (14,9 cm)



## Large T-Handle Fixed Drivers

*Large easy grip soft silicone handled drivers help provide a sturdy non-slip grip*

The two standard Quick-connect models release by pulling the collar backward.

The Reverse Quick-connect model helps to prevent release if the collar is pressed against soft tissue, and is designed to have the collar be pushed forward for release.



Zimmer Hall Quick-connect

Zimmer Hall Reverse Quick-connect

Hudson Quick-connect



Zimmer Hall Quick-connect



Hudson Quick-connect

**PRODUCT NO'S:**

8248 [Zimmer Hall Quick-connect]  
Overall Length: 5.75" (15,6 cm)  
Handle Width: 4.625" (11,6 cm)

8248-01 [Reverse Quick-connect Zimmer Hall]  
Overall Length: 5.75" (15,6 cm)  
Handle Width: 4.625" (11,6 cm)

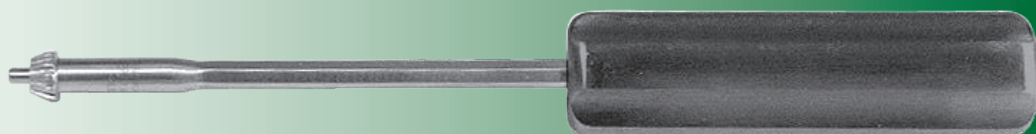
8249 [Hudson Quick-connect]  
Overall Length: 6.75" (17,1 cm)  
Overall Length with Pin In Handle: 11.5" (29,2 cm)



## Large Handle Chuck Key

*For easy tightening/untightening of a chuck*

Designed to allow a chuck to be tightened and untightened easily.



**PRODUCT NO:**

5517-01

Chuck Size: 1/4" (6,4 mm)  
Overall Length: 10.5" (26,7 cm)  
Handle Length: 4.5" (11,4 cm)





## Stulberg Incision Close Gelpi & Blade Set

Designed by S. David Stulberg, MD

*Designed to help expose difficult to  
visualize areas at the end of incisions*

### PRODUCT NO'S:

4269-00 [Set – 1 Gelpi & 1 Blade]

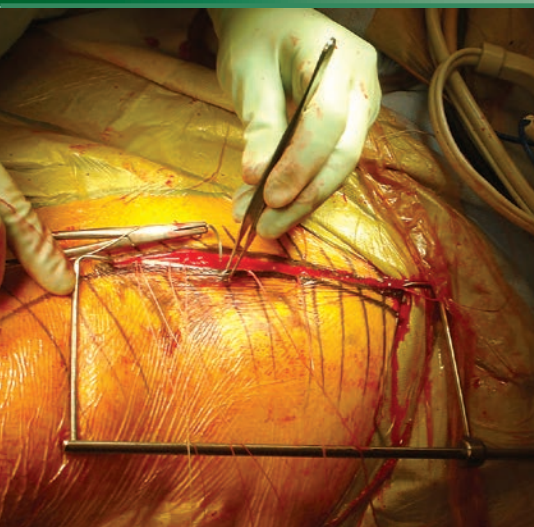
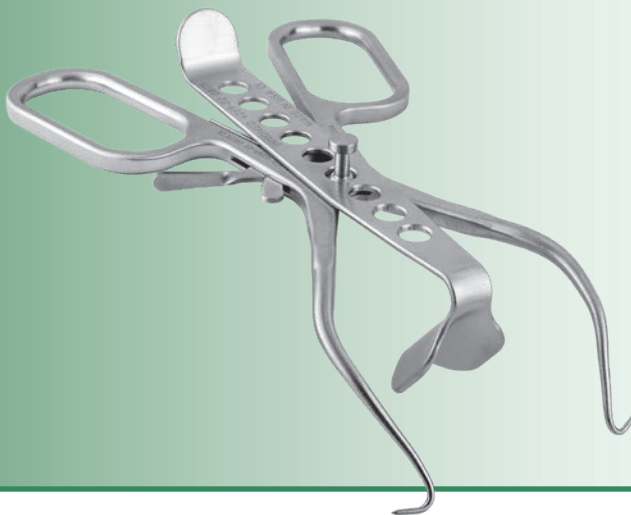
### Also available Individually:

4269-01 [Gelpi]

Overall Length: 7.25" (18.4 cm)  
Maximum Spread Width: 3.5" (8.9 cm)

4269-02 [Blade]

Overall Length: 5.5" (14 cm)  
Blade Width: 1" (2.54 cm)  
Blade Bend-Back Angle: 130°



## Incision Aligner

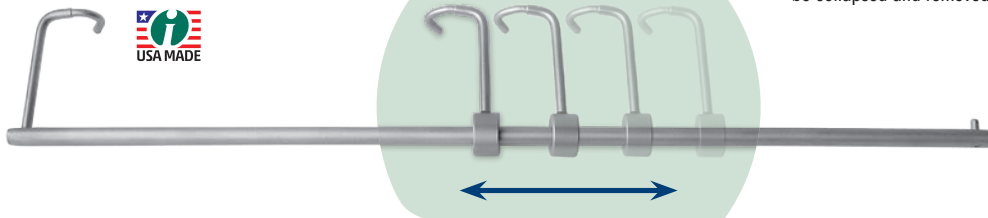
Designed by DMP

*Designed to align an incision during closing*

### PRODUCT NO:

1330

Overall Length: 14" (35.6 cm)  
Blade Offset: 45 mm



The bent ends of the aligner are placed at each end of an incision, which is aligned by pulling outward on each end. The sliding end will lock in place when it is tensioned. Pressing inward slightly on the sliding end will allow the aligner to be collapsed and removed.

## Dodson Extremity Skin Saver

Designed by Mark A. Dodson, MD

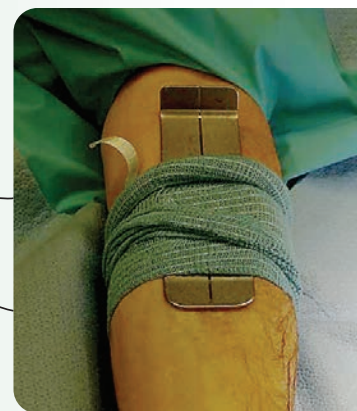
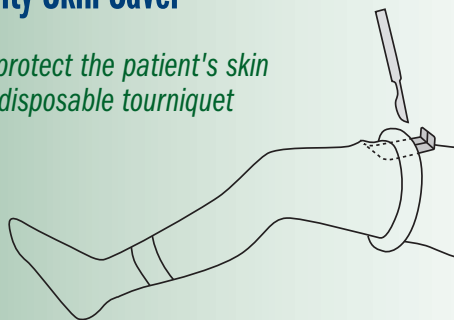
*Designed to help protect the patient's skin  
when removing a disposable tourniquet*



### PRODUCT NO:

8628

Overall Length: 4.75" (12.1 cm)  
Width: 1.5" (3.8 cm)  
Lip: .5" (1.3 cm)



## Sweed Dissecting Scissors

Designed by Tamer Sweed, FRCS (Orth)

*Designed with a blunt, flat bar  
fixed to the lower limb, the scissors  
also act as a dissector to protect  
underlying vital structures*

### PRODUCT NO:

3081

Overall Length: 6.625" (16.8 cm)  
Bottom Pad: 16 mm x 6 mm  
Pad Extension Beyond Scissor: 6 mm





## Rogozinski Locking Needle Driver/Scissors

Designed with a quick lock & release handle, can drive a needle and cut a suture without changing instruments



| PRODUCT NO'S:   |                                 |
|-----------------|---------------------------------|
| 3083 [Standard] | Overall Length: 6.5" (16,5 cm)  |
| 3084 [Large]    | Overall Length: 7.75" (19,7 cm) |

Designed by  
Chaim Rogozinski, MD

MADE EXCLUSIVELY  
FOR INNOMED IN  
GERMANY



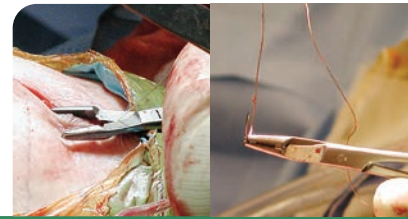
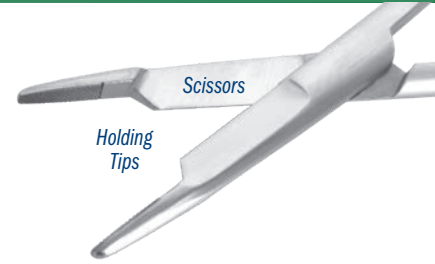
Longer sizes are  
helpful in orthopedics

## Orthopedic Needle Holder/Scissors

Drive a needle and cut a suture without changing instruments

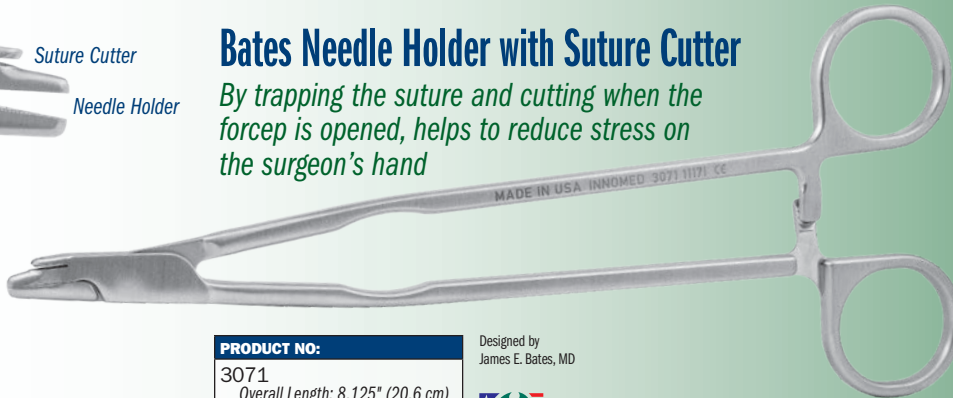
| PRODUCT NO'S:       |                       |
|---------------------|-----------------------|
| Standard Tips       | Tungsten Carbide Tips |
|                     | 3045 4.5" (11,4 cm)   |
| 3050 5.5" (14 cm)   | 3055 5.5" (14 cm)     |
| 3060 6.5" (16,5 cm) | 3065 6.5" (16,5 cm)   |
| 3070 7.0" (17,8 cm) | 3075 7.0" (17,8 cm)   |

MADE FOR INNOMED IN  
GERMANY



## Bates Needle Holder with Suture Cutter

By trapping the suture and cutting when the forcep is opened, helps to reduce stress on the surgeon's hand

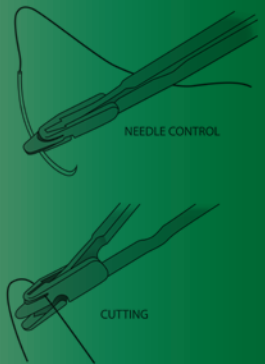


| PRODUCT NO: |                                  |
|-------------|----------------------------------|
| 3071        | Overall Length: 8.125" (20,6 cm) |
|             | Jaw Width: .25" (6,4 mm)         |
|             | Open Jaw Length: .5" (12,8 mm)   |

Designed by  
James E. Bates, MD



- ▶ No switching between needle driver and scissors, or need for assistant to cut sutures for you
- ▶ Cutting with opening of forceps reduces possibility of damage to surrounding tissues
- ▶ Sliding the instrument down to the suture knot allows quick and consistent 2 mm suture tails
- ▶ Slip the suture strands into the suture cutting slot and slide the closed instrument along until desired length of tail is achieved, then open the instrument to cut the sutures



## Stanton Needle Driver

Designed by John L. Stanton, MD, FACS

Allows a heavy cutting needle such as an OS-6 to be pushed through cancellous bone when re-attaching muscle or tendon

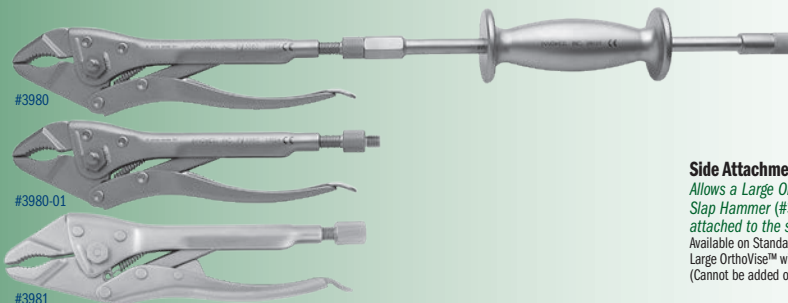
The groove captures the outer (convex) side of the needle and prevents the needle from spinning even when applying significant pressure. Useful for reattaching the rotator cuff in rotator cuff repairs, as well as in attaching suture anchors.

| PRODUCT NO: |                                |
|-------------|--------------------------------|
| 3042        | Overall Length: 6.75 (17,1 cm) |
|             | Jaw Width: .25" (6,3 mm)       |



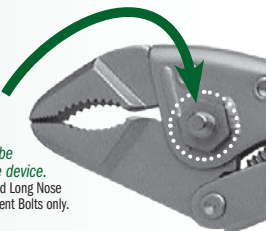
## STANDARD LARGE

| PRODUCT NO'S: |   |
|---------------|---|
|               | OrthoVise™ Length: 10" (25,4 cm)  |
| 3980          | with Attachment Bolts (two sides & end)<br>with Large OrthoVise™ Slap Hammer (#3950)  |
| 3980-01       | with Attachment Bolts (two sides & end)<br>without Slap Hammer  |
| 3981          | without Attachment Bolts<br>without Slap Hammer<br>with End Attachment Nut that accepts a<br>Standard Slap Hammer (#3925 or 3926) |



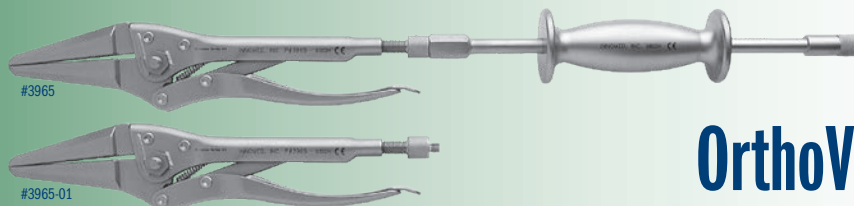
### Side Attachment Bolts

Allows a Large OrthoVise™ Slap Hammer (#3950) to be attached to the side of the device. Available on Standard Large and Long Nose Large OrthoVise™ with Attachment Bolts only. (Cannot be added on later.)



## LONG NOSE LARGE

| PRODUCT NO'S: |  |
|---------------|--|
|               | OrthoVise™ Length: 12" (30,5 cm)   |
| 3965          | with Attachment Bolts (two sides & end)<br>with Large OrthoVise™ Slap Hammer (#3950) |
| 3965-01       | with Attachment Bolts (two sides & end)<br>without Slap Hammer                       |

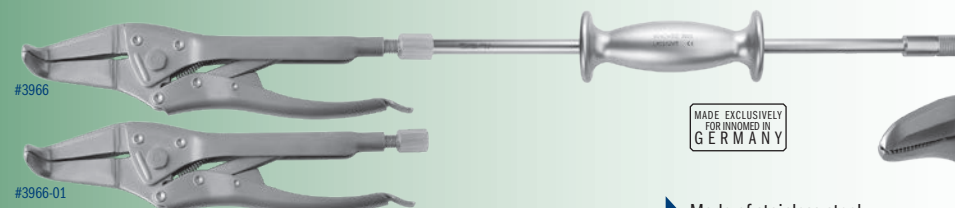


# OrthoVise™

U.S. Patent #D398,208

## LONG NOSE LARGE BENT JAW

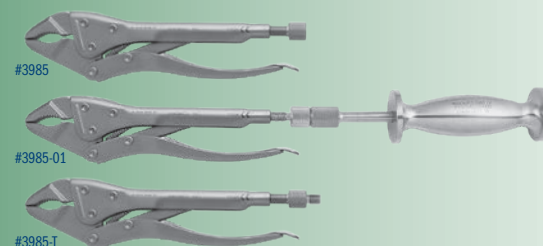
| PRODUCT NO'S: |   |
|---------------|---|
|               | OrthoVise™ Length: 11.5" (29,2 cm)  |
| 3966          | with Attachment Nut (end)<br>with Standard Slap Hammer (#3925)  |
| 3966-01       | without Slap Hammer<br>with Attachment Nut (end) that accepts a<br>Standard Slap Hammer (#3925 or 3926) |



MADE EXCLUSIVELY  
FOR INNOVIMED IN  
GERMANY

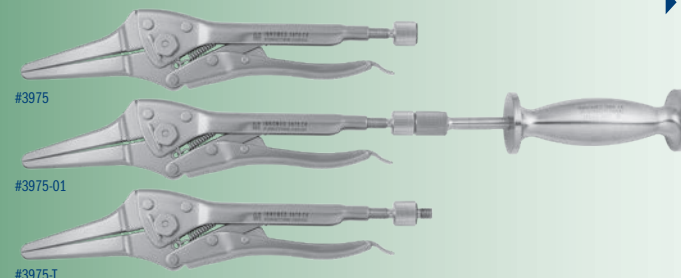
## STANDARD SMALL

| PRODUCT NO'S: |   |
|---------------|---|
|               | OrthoVise™ Length: 8" (20,3 cm)   |
| 3985          | without Attachment Bolt<br>without Slap Hammer                          |
| 3985-01       | with Attachment Bolt (end)<br>with Small OrthoVise™ Slap Hammer (#3955) |
| 3985-T        | with Attachment Bolt (end)<br>without Slap Hammer                       |



## LONG NOSE SMALL

| PRODUCT NO'S: |   |
|---------------|---|
|               | OrthoVise™ Length: 9.5" (24,1 cm)                                       |
| 3975          | without Attachment Bolt<br>without Slap Hammer                          |
| 3975-01       | with Attachment Bolt (end)<br>with Small OrthoVise™ Slap Hammer (#3955) |
| 3975-T        | with Attachment Bolt (end)<br>without Slap Hammer                       |



- ▶ Made of stainless steel
- ▶ Models equipped with attachment bolts allow a slap hammer to be attached to the end, as well as to either side of the large OrthoVise™ (except Bent Jaw models), for greater adaptability
- ▶ Bent Jaw models are not available with side attachment bolts, but have an end attachment nut to accept a Standard Slap Hammer (#3925 or #3926)
- ▶ A different size slap hammer is used for the large and small sizes of OrthoVise™
- ▶ Slap Hammers are designed with a hammer plate for the additional use of a mallet if desired

## SLAP HAMMERS

| PRODUCT NO'S: |   |
|---------------|---|
| 3950          | [Slap Hammer for Large OrthoVise]<br>For use with 3965's, 3980's, 3981<br>Overall Length: 16.5" (41,9 cm) |
| 3955          | [Slap Hammer for Small OrthoVise]<br>For use with: 3975's, 3985's<br>Overall Length: 8.75" (22,2 cm)      |
| 3925          | [Standard Slap Hammer w/16" Rod]<br>For use with: 3966's<br>Overall Length: 16" (40,7 cm)                 |
| 3926          | [Easy Grip Slap Hammer w/16" Rod]<br>For use with: 3966's<br>Overall Length: 16" (40,7 cm)                |

For Large  
OrthoVise



For Small  
OrthoVise



Standard  
with 16" Rod



Easy Grip Standard  
with 16" Rod



## THREADED ADAPTERS

| PRODUCT NO'S: |  |
|---------------|--|
| 3980-02       | [Small Adapter]<br>Changes Male End of a Slap Hammer to Female                 |
| 3980-03       | [Threaded Adapting Screw – Large]<br>For use with 3965's, 3966's, 3980's, 3981 |
| 3985-03       | [Threaded Adapting Screw – Small]<br>For use with: 3975's, 3985's              |

Small Adapter



Female/Female  
Adapter Converts  
from Male/Male

Small Adapter allows a Standard Slap Hammer (#3925 or #3926) to be used with any Large OrthoVise™ with Attachment Bolts

Threaded Large



Threaded Small



Threaded Adapting Screws can be used to append the corresponding size OrthoVise™ with an Attachment Bolt for use with a Slap Hammer

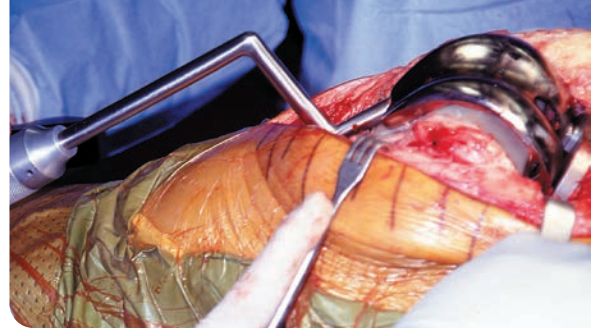


## Boynton Punch

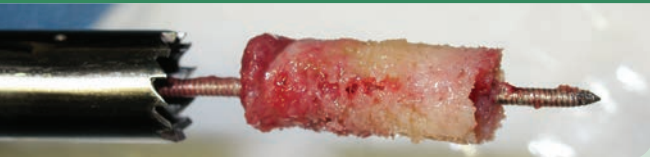
Designed by L. Boynton, MD

*Helpful in removing trial, femoral and revision total knee components*

The flange end fits onto the flange of a femoral knee component or trial.

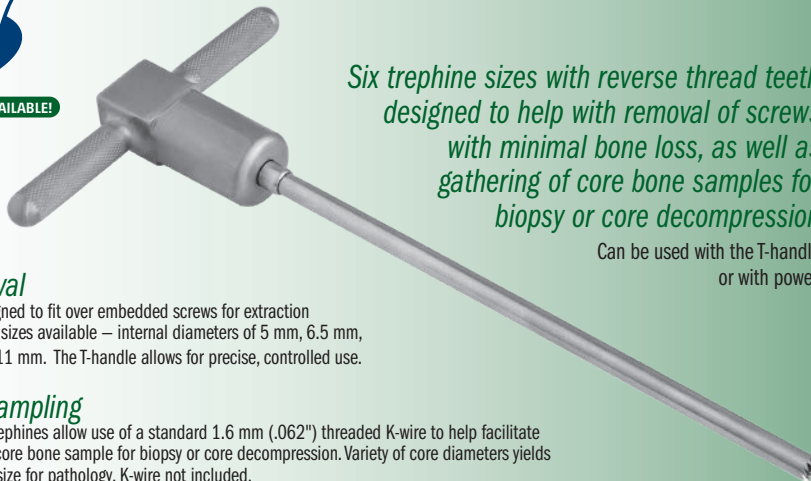


| PRODUCT NO'S:                    |                                  |
|----------------------------------|----------------------------------|
| 5120-01 [Standard]               | 5120-02 [Offset]                 |
| Overall Length: 11.75" (29,8 cm) | Overall Length: 11.75" (29,8 cm) |
| Shaft Diameter: 9,5 mm           | Shaft Diameter: 9,5 mm           |
|                                  | Punch End Offset: 60 mm          |



## Cheng Screw Removal and Bone Trephine Set

Designed by Edward Cheng, MD



*Six trephine sizes with reverse thread teeth designed to help with removal of screws with minimal bone loss, as well as gathering of core bone samples for biopsy or core decompression*

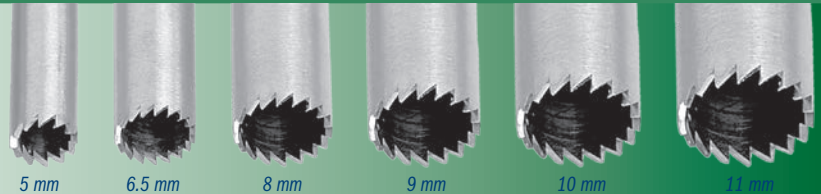
Can be used with the T-handle or with power.

### For Screw Removal

The trephine ends are designed to fit over embedded screws for extraction with minimal bone loss. Six sizes available – internal diameters of 5 mm, 6.5 mm, 8 mm, 9 mm, 10 mm, and 11 mm. The T-handle allows for precise, controlled use.

### For Core Bone Sampling

Cannulated T-handle and trephines allow use of a standard 1.6 mm (.062") threaded K-wire to help facilitate grasping and removal of a core bone sample for biopsy or core decompression. Variety of core diameters yields bone samples of sufficient size for pathology. K-wire not included.



Trephine Sizes

K-wire not included.



| PRODUCT NO'S:                             |      |
|---|------|
| 1426-00 [Complete Set with Case]          |      |
| <b>Set Includes/Available Separately:</b> |      |
| 1426-01 [5 mm Internal Diameter]          |      |
| Overall Length: 7.125" (18,1 cm)          |      |
| 1426-02 [6.5 mm Internal Diameter]        |      |
| Overall Length: 7.125" (18,1 cm)          |      |
| 1426-03 [8 mm Internal Diameter]          |      |
| Overall Length: 7.125" (18,1 cm)          |      |
| 1426-05 [9 mm Internal Diameter]          | New! |
| Overall Length: 7.125" (18,1 cm)          |      |
| 1426-06 [10 mm Internal Diameter]         | New! |
| Overall Length: 7.125" (18,1 cm)          |      |
| 1426-07 [11 mm Internal Diameter]         | New! |
| Overall Length: 7.125" (18,1 cm)          |      |
| 1426-04 [Handle Assembly]                 |      |
| Dimensions: 4" x 2" (10,2 cm x 5,1 cm)    |      |
| 1025 [Sterilization Case]                 |      |
| <b>Replacement Part:</b>                  |      |
| 1425-14-B-COMP [Handle Retaining Screw]   |      |

## Protect your hands!

## Radiation Attenuating Surgical Gloves

*Powder-free gloves provide increased protection from direct x-ray beam and scattered radiation*

### Reduced Exposure

Lead-free, surgical gloves attenuate direct or scattered rays and are an environmentally friendly alternative to leaded gloves.

### Freedom of Movement

Gloves are very thin—ONLY 0.007" THICK—to allow the greatest possible flexibility, dexterity, and sensitivity of touch while decreasing finger fatigue.

### Natural Latex Free & Powder-Free

Reduced risk of natural rubber latex allergies.

### Quality Guaranteed

All gloves are 100% tested for pin holes and leaks.

### Applications

Fluoroscopy, Orthopedics, Radioisotope Handling, Cardiology, Radiology, Dental, Nuclear Medicine

*Suitable for reducing harmful radiation exposure during any procedure requiring the use of fluoroscopy*



Average Radiation Attenuation Levels Measured in the Direct Beam

| Beam Quality | Aluminum Half Value Layer | Measured Attenuation |
|--------------|---------------------------|----------------------|
| 60 kVp       | HVL = 2.3 mm              | 58.7%                |
| 80 kVp       | HVL = 3.3 mm              | 49.9%                |
| 100 kVp      | HVL = 4.3 mm              | 44.6%                |
| 120 kVp      | HVL = 5.6 mm              | 40.6%                |

**NOTE: Double gloving with conventional latex surgical gloves provides only 1% attenuation.**  
Levels are measured by a fixed filter equivalent: 2.5 mm Al



| PRODUCT NO'S:       |                      |
|---------------------|----------------------|
| <b>5 PAIRS/PACK</b> | <b>25 PAIRS/PACK</b> |
| 7510-01 7.0         | 7510-02 7.0          |
| 7515-01 7.5         | 7515-02 7.5          |
| 7520-01 8.0         | 7520-02 8.0          |
| 7525-01 8.5         | 7525-02 8.5          |
| 7530-01 9.0         | 7530-02 9.0          |





Set consists of one handle and one sterilization/storage case, plus seven double ended screwdriver bits:

- ▶ small & large single slot
- ▶ cross & cruciate
- ▶ 3.5 mm & 4.5 mm hex
- ▶ small & large phillips
- ▶ #6 & #8 star
- ▶ #10 & #15 star
- ▶ #20 & #25 star



## Universal Screwdriver Set

*Helps eliminate the opening of multiple sterile packs when a specific size or style of screwdriver is needed*

Helpful during revision total joint surgery where screws have been used, removal of bone plates, fracture fixation screws or bone graft screws.

### PRODUCT NO'S:

5195 [Complete Set with Case]  
*Also sold individually*

5195-01 [Handle]

5195-02 [Straight (single slot)]  
Large: 7 x 1.5 mm, Small: 5 x 1 mm

5195-03 [Cross/Cruciate]  
Large: 7 mm, Small: 6 mm

5195-04 [Hex]  
Large: 4.5 mm, Small: 3.5 mm

5195-05 [Phillips]  
Large: 4 mm, Small: 3.5 mm

5195-08 [Small Star: #6 & #8]

5195-06 [Medium Star: #10 & #15]

5195-07 [Large Star: #20 & #25]



## Torx/Hex Adapter Set

Designed by Stephen M. Walsh, MD

*Designed for conversion of a 3.5 mm screwdriver*

Especially helpful when an articulated, universal joint driver is needed (i.e. acetabular screws)

### PRODUCT NO'S:

8003-00 [Set – One Each]

**Set Includes/Available Separately:**

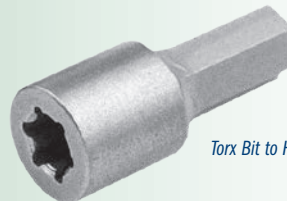
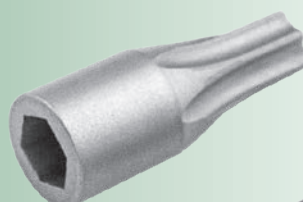
8003-01 [Torx Bit to Hex Driver Adapter]  
Overall Length: .6" (1.54 cm)

8003-02 [Hex Bit to Torx Driver Adapter]  
Overall Length: .6" (1.54 cm)

Hex Bit to Torx Driver Adapter



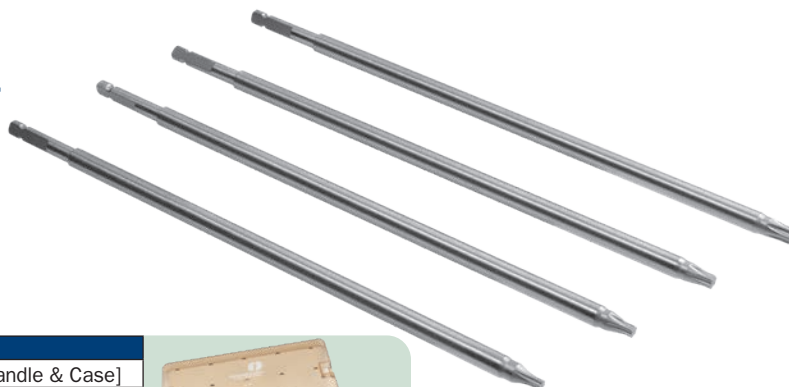
*New!*



Torx Bit to Hex Driver Adapter

## Star Bit Driver Set

*Helps eliminate the opening of multiple sterile packs when a specific size of star bit is needed*



### PRODUCT NO'S:

5194-00 [4 Star Bits w/Handle & Case]

5194-01 [4 Star Bits w/Case only]

**Also sold individually:**

S0113 [Universal 4" (10.2 cm) Handle]

5194-10 [T10 with A/O End]

5194-15 [T15 with A/O End]

5194-20 [T20 with A/O End]

5194-25 [T25 with A/O End]

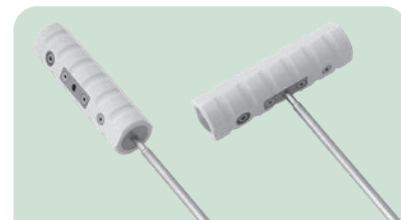
9003 [Case]



Set in Storage Case



Helpful during revision total joint surgery. Set consists of four star bits – T10, T15, T20, & T25, a handle which accommodates any of the above bits, and a sterilization case. The drive end (A/O) is designed for easy and quick engagement with the universal instrument handle. The ergonomic, modular handle has two connection points, allowing for both straight and T-handle orientations.



## Soft Impact Mallets with Easy Grip Handles

Weidman handle designed by Kevin Weidman, MD

### Provides shock-absorbing force

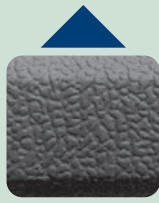
Filled with a shock-absorbing media and has a flat striking surface to keep the mallet centered on an instrument while providing less bounce or wasted force.

The comfortable Easy Grip handle is made of a textured silicone that helps prevent the surgeon's gloved hand from slipping and helps maintain a solid grip. The bottom can also be used to tap an implant in place.

The mallet with delrin head features a replaceable delrin head.



**Easy Grip**  
Textured  
Soft Silicone  
Handles



Comfortable grip helps prevent the surgeon's gloved hand from slipping and helps maintain a solid grip.



Replacement Delrin Heads



#### PRODUCT NO'S:

7820 [2 lbs. Standard]  
Weight: 2 lbs. (.907 kg)  
Overall Length: 10.5" (26,7 cm)  
Handle Length: 5" (12,7 cm)  
Head Width: 3.5" (8,9 cm)  
Head Diameter: 1.375" (3,5 cm)

7821 [2 lbs. w/Weidman Handle]  
Weight: 2 lbs. (.907 kg)  
Overall Length: 10.625" (27 cm)  
Grip Length: 5.5" (14 cm)  
Head Width: 3.5" (8,9 cm)  
Head Diameter: 1.375" (3,5 cm)

7832 [2 lbs. With Delrin End]  
Weight: 2 lbs. (.907 kg)  
Overall Length: 10.5" (26,7 cm)  
Handle Length: 5" (12,7 cm)  
Head Width: 3.5" (8,9 cm)  
Head Diameter: 1.375" (3,5 cm)

7837 [3 lbs. Standard]  
Weight: 3 lbs. (1.35 kg)  
Overall Length: 11" (27,9 cm)  
Handle Length: 5" (12,7 cm)  
Head Width: 3.5" (8,9 cm)  
Head Diameter: 1.875" (4,8 cm)

#### Delrin Head Replacements for 7832:

7832-HEAD01 [.5" Stud] Single  
7832-HEAD02 [.5" Stud] 3-Pack  
7832-HEAD03 [.875" Stud] Single  
7832-HEAD04 [.875" Stud] 3-Pack

## Ortho Mallets with Easy Grip Handles

These solid stainless steel mallets each have a comfortable 4½" grip made of a textured silicone that helps prevent the surgeon's gloved hand from slipping and helps maintain a solid grip.



#### PRODUCT NO'S:

7810 [Small]  
Overall Length: 8" (20,3 cm)  
Handle Length: 4.5" (11,4 cm)  
Head Weight: 1 lb. (.45 kg)  
Head Diameter: 1.3125"

7815 [Large]  
Overall Length: 8" (20,3 cm)  
Handle Length: 4.5" (11,4 cm)  
Head Weight: 1.75 lb. (.8 kg)  
Head Diameter: 1.5" (3,8 cm)

## Jones Mallet

Designed by Dickie Jones, MD

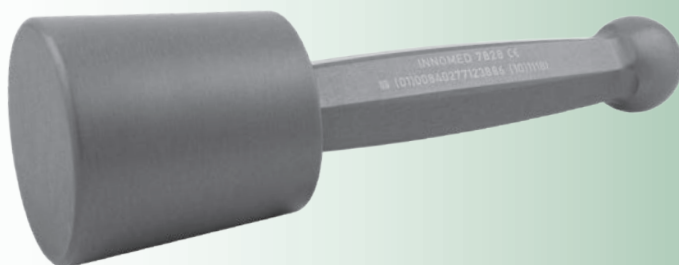
### Unique hand fitting shape provides superior gripping strength

This striking instrument has a unique hand fitting shape that provides superior gripping strength for accurate light to heavy impaction.



#### PRODUCT NO:

7825 [2.4 lbs]  
Overall Length: 8.25" (21 cm)  
Head Width: 3" (7,6 cm)  
Head Diameter: 1.5" (3,8 cm)



## Aluminum Tapered Maul/Mallet

The large surface area allows the surgeon to focus on the action area of the instrument being struck, instead of making sure the mallet will strike the end of the instrument, much like a sculptors mallet

#### PRODUCT NO:

7828  
Overall Length: 9.15" (23,2 cm)  
Handle Length: 6" (15,2 cm)  
End Diameter: 3" (7,6 mm)





Syringe not included.

## Gray Syringe Assist with Ergonomic Handle

Designed by Robert Gray, MD

*For use in the O.R or the office, the design helps to prevent hand fatigue and pain when injecting with a 20mL syringe over multiple cases*

- ▶ Sterilizable for O.R use, such as injecting the posterior capsule during TKA
- ▶ Especially useful for injecting preoperative local anesthesia for WALANT surgery
- ▶ Uses finger flexors to generate more force over more surface area than only the thumb flexor
- ▶ Ratchet mechanism ensures maximal grip force generation throughout entire injection

### PRODUCT NO:

8988

Overall Length - Closed: 5.25" (13,3 cm)

Overall Length - Open: 7.5" (19,1 cm)

Height: 5" (12,7 cm)

Syring Diameter: 21 mm



Patent Pending

## White Aspiration Handle

Designed by Edward White, MD

*Designed for aspiration of cavities or spaces that have greater than 20 ml volume, such as joints, bone marrow, and the iliac crest*

Works with a 60 ml syringe (not included) only.

### PRODUCT NO:

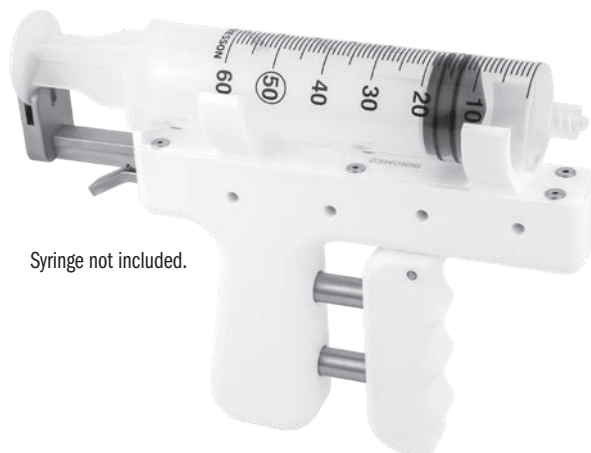
1131

Height: 5" (12,7 cm)

Length: 6.5" (16,5 cm) / Extends to 11" (27,9 cm)

Width at Syringe Holder: 1.5" (3,8 cm)

Body Width: .9" (2,3 cm)



Syringe not included.

## Ortho Suction Tube

Designed by T. Eickmann, MD



*Very effective for suction and minor retracting*

Helps eliminate plugging due to bone, cement fragments, blood clots, etc.

### PRODUCT NO:

5465

Overall Length: 9.25" (23,5 cm)

End Hole Dia.: 1 mm

Side Hole Dia.: 1.5 mm



## Becker Curette Suction Device

Designed by Clint Becker, MD

*Designed to help visualization of a fracture site within a fracture hematoma*

Also useful for arthroscopic curettage of osteochondral lesions.

### PRODUCT NO:

4231

Overall Length: 10.5" (26,7 cm)

Curette Cup: 7.5 mm x 5.5 mm



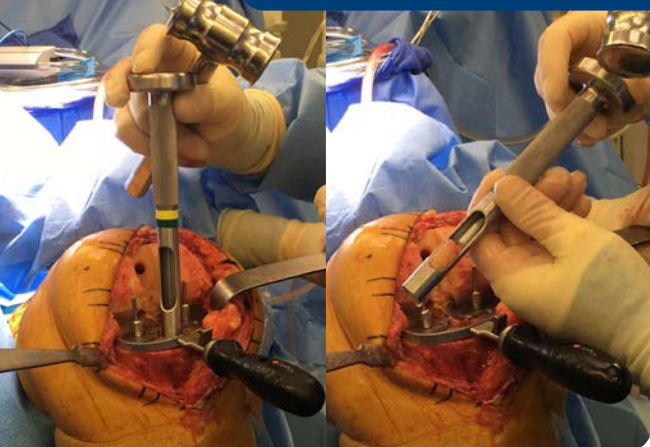


# FREE TRIAL

## on most instruments

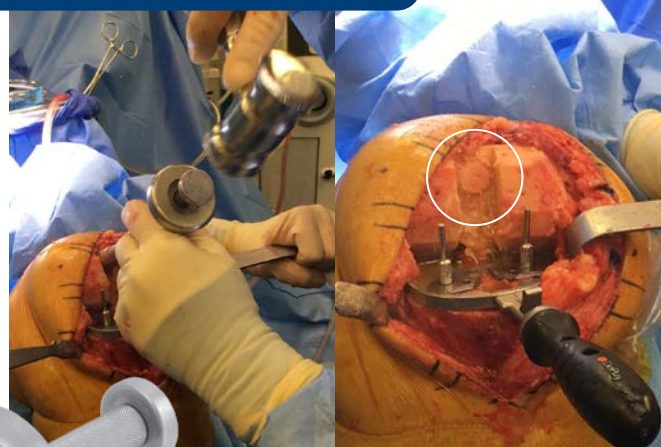
Instruments are available for a no-charge two-week evaluation – includes FREE UPS Ground Shipping\*

\*When shipped to a hospital or medical center; additional charge applies for expedited shipping.  
Free trial offer excludes implant extraction instruments, which are available as rentals. There is a pad replacement charge with the hip positioners.



*Use punch to  
remove tibial  
bone plug, then...*

*...use tamp to insert  
plug as autograft for the  
femoral intramedullary  
alignment hole*



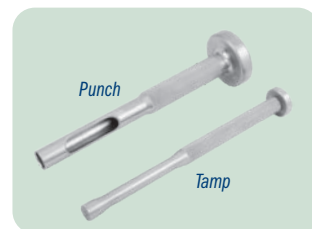
## Goytia Osteotome Punch Tamp Assembly

Designed by Robin Goytia, MD

*Designed for removing a tibial bone  
plug to use as autograft for the  
femoral intramedullary  
alignment hole in total  
knee replacement*



| PRODUCT NO'S:                          |                    |
|--|--------------------|
| 5339-00                                | [Punch & Tamp Set] |
| Set Includes / Available Individually: |                    |
| 5339-01                                | [Osteotome Punch]  |
| Overall Length: 7.75" (19.7 cm)        |                    |
| Outside Diameter: 16 mm                |                    |
| Inside Diameter: 13.7 mm               |                    |
| 5339-02                                | [Tamp]             |
| Overall Length: 7.75" (19.7 cm)        |                    |
| Diameter: 12.3 mm                      |                    |



**Innomed, Inc**  
103 Estus Drive  
Savannah, GA 31404

Tel 912.236.0000  
Fax 912.236.7766  
www.innomed.net  
info@innomed.net

# TOLL FREE 1.800.548.2362

[www.innomed.net](http://www.innomed.net)



[info@innomed.net](mailto:info@innomed.net)

Scan to Launch

Our Website



ISO 13485:2016



**Innomed-Europe LLC**  
Alte Steinhäuserstr. 19  
CH-6330 Cham, Switzerland  
Tel 0041 (0) 41 740 67 74  
Fax 0041 (0) 41 740 67 71

**Innomed-Europe GmbH**  
Villingen-Schwenningen,  
Deutschland  
Tel 0049 (0) 7720 46110 60  
Fax 0049 (0) 7720 46110 61  
www.innomed-europe.com  
info@innomed-europe.com