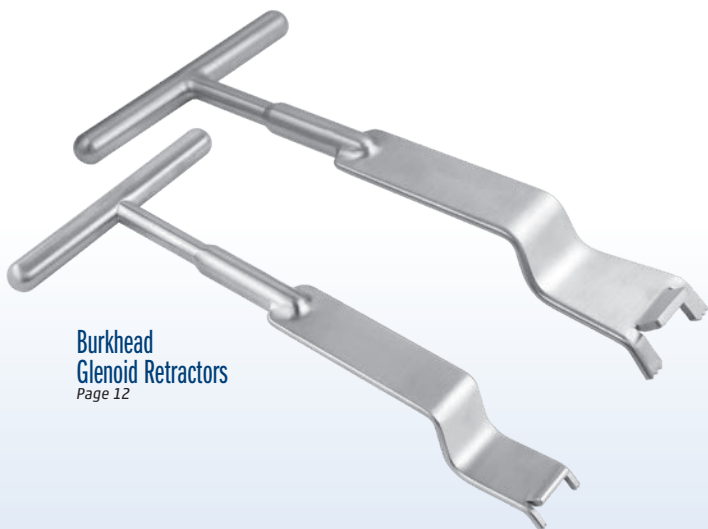


INNOMED

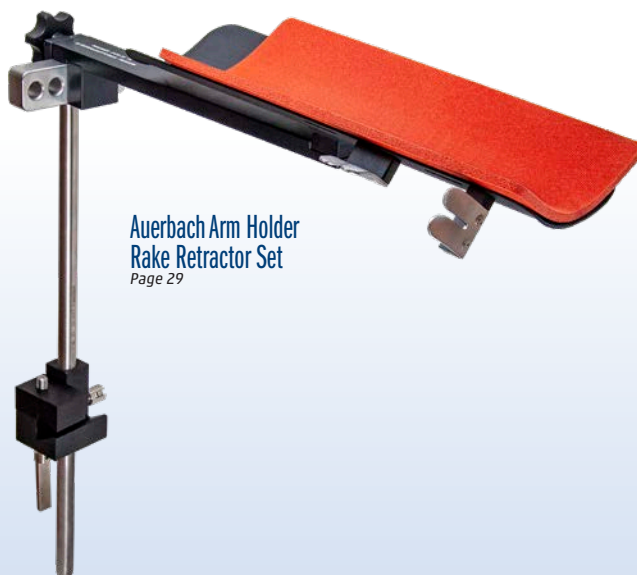
ORTHOPEDIC INSTRUMENTS



AUGUST 2020



Burkhead
Glenoid Retractors
Page 12



Auerbach Arm Holder
Rake Retractor Set
Page 29



Weatherly
Mini-Deltoid
Retractors
Back Cover

Featuring many **New!** instruments throughout



Glenoid Access Retractor
Page 3

1.800.548.2362 • WWW.INNOMED.NET

Shoulder & Elbow Instruments

What's New In This Catalog?

a snapshot of all the *New!* instruments within



**Auerbach Arm Holder
Rake Retractor Set**
Page 29



**Deep Meyerding
Retractor with
Ergonomic Handle**
Page 20



**Fracture Reduction
Punch Clamp**
Page 25



Glenoid Access Retractor
Page 3

Glenosphere Component Retractor
Page 9



**Mazzara Rongeur with
Small Pistol Grip Handle**
Page 27



**Mehalik
Posterior Glenoid Retractor
with Long Handle**
Page 14



Meyer Latarjet Drill Guide & Forceps Assembly
Page 22

**Powers Modified Kocher Clamp
- Tapered Narrow Jaw**
Page 27



**Resnick Small Bone Tamp
with Oblique K-Wire Hole**
Page 23



Small Bone Awns
Page 28

Shark Tooth Grasper - 12" Shaft
Page 27



**Weatherly Mini-Deltoid
Retractors**
Back Cover



Nicholson Headrest

Designed by Gregory Nicholson, MD

*Helps position the patient for
all types of shoulder surgery
in the beachchair position*

Designed to provide excellent exposure to the shoulder, the headrest can be used with standard OR tables (with no modifications to the table). The headrest provides patient support and helps position the patient for all types of shoulder surgery—arthroscopic and open—in the beachchair position. It can be quickly placed and adjusted.



A gel pad forehead strap with velcro is included for optional use.

PRODUCT NO'S:

2450 [Headrest]

Main Plate Dimensions: 6" x 18" (15,2 x 45,7 cm)

Neck Offset Adjustment: 8" (20,3 cm)

Includes/Replacement Parts:

2450-S [Strap with Gel Pad]

4150-PD2 [Set of 2 Pads]



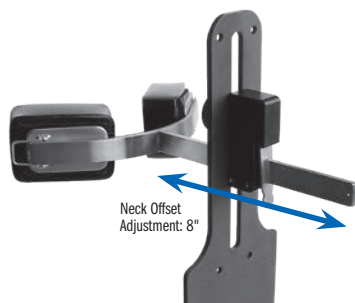
*Provides excellent exposure to
the shoulder, and patient support*



BEFORE



AFTER



Neck Offset
Adjustment: 8"

Shoulder Surgery Retractor System

Developed in collaboration with Mayo Clinic.

PRODUCT NO'S:

1251-00 [Complete System]

Included in Set/Available individually:

1252-N [Modified Thin Glenoid Retractor–Narrow]

Two included in set; one with this product number

Overall Length: 11.875" (30,2 cm)

Blade Width: 15 mm

1252-W [Modified Thin Glenoid Retractor–Wide]

Two included in set; one with this product number

Overall Length: 11.875" (30,2 cm)

Blade Width: 23 mm

1253 [Right Angle Hohmann Retractor]

Overall Length: 8.125" (20,6 cm)

Depth from Bend: 4.25" (10,8 cm)

Blade Width: 16 mm

1254 [Modified Fukuda Retractor]

Overall Length: 8.625" (21,9 cm)

Depth: 2.75" (7 cm)

Blade Width: 39 mm

1255-L [Brown Deltoid/Richardson Retractor–Large]

Overall Length: 10.5" (26,7 cm)

Depth: 2.5" (6,4 cm)

Blade Width: 60 mm

1255-S [Brown Deltoid/Richardson Retractor–Small]

Overall Length: 10.5" (26,7 cm)

Depth: 2.5" (6,4 cm)

Blade Width: 44 mm

1256 [Modified Darrach Retractor, Straight–Narrow]

Overall Length: 10.25" (26 cm)

Blade Width: 12,7 mm

1257 [Modified Darrach Retractor, Straight–Wide]

Overall Length: 10.25" (26 cm)

Blade Width: 19 mm

1258 [Modified Darrach Retractor, Bent–Narrow]

Overall Length: 10.75" (27,3 cm)

Blade Width: 12,7 mm

1259 [Modified Darrach Retractor, Bent–Wide]

Overall Length: 10.75" (27,3 cm)

Blade Width: 19 mm

1260 [Soft Tissue Shoulder Retractor]

Overall Length: 10" (25,4 cm)

Depth from Bend: 3" (7,6 cm)

Blade Width: 19 mm

1261 [Glenoid Access Retractor]

Overall Length: 13.5" (34,3 cm)

Access Hole Internal Diameter: 36 mm X 30 mm

Depth of Prongs: 8.5 mm



System includes two of each size of the Modified Thin Glenoid Retractors, and one of each of the other retractors.

Modified Thin Glenoid Retractor–Narrow & Wide

Right Angle Hohmann Retractor

Modified Fukuda Retractor

Brown Deltoid/Richardson Retractor–Large & Small

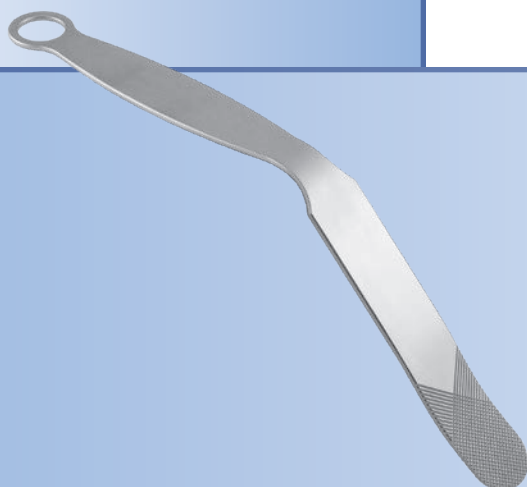
Modified Darrach Retractor, Straight–Narrow & Wide

Modified Darrach Retractor, Bent–Narrow & Wide

Soft Tissue Shoulder Retractor

Glenoid Access Retractor

New!



Modified Darrach-type Bent Elevator

Designed modification by R.L. Stowell, MD of original design by Evan Flatow, MD

Designed for difficult glenoid exposure, the elevator is placed around the posterior glenoid rim, retracting the cut humeral surface

PRODUCT NO:

1966

Overall Length: 10" (25,4 cm)

Blade Depth: 5" (12,7 cm)

Blade Width: 1" (2,54 cm)



Bell-Hawkins Shoulder Frame and Blade Set

Designed by Robert H. Bell, MD and Richard Hawkins, MD

Retractor and Frame System for Total Shoulder Arthroplasty

PRODUCT NO'S:	
4696-00	[Bell-Hawkins – Complete Set]
Included in Set/Available individually:	
4696-01	[Small Adjustable Retractor] Overall Length: 7.375" (18,7 cm) Handle Length: 6" (15,2 cm) Blade Width: 1.25" (32 mm) Blade Depth: .8" (20 mm)
4696-02	[Medium Adjustable Retractor] Overall Length: 7.375" (18,7 cm) Handle Length: 6" (15,2 cm) Blade Width: 1.7" (43 mm) Blade Depth: 1.25" (32 mm)
4696-03	[Deep Adjustable Retractor] Overall Length: 7.375" (18,7 cm) Handle Length: 6" (15,2 cm) Blade Width: 1.6" (41 mm) Blade Depth: 2" (51 mm)
4696-04	[Small Fixed Retractor] Overall Length: 3" (7,6 cm) Handle Length: 1.5" (3,8 cm) Blade Width: 1.25" (32 mm) Blade Depth: .8" (20 mm)
4696-05	[Medium Fixed Retractor] Overall Length: 3" (7,6 cm) Handle Length: 1.5" (3,8 cm) Blade Width: 1.25" (32 mm) Blade Depth: 1.25" (32 mm)
4696-06	[Deep Fixed Retractor] Overall Length: 3" (7,6 cm) Handle Length: 1.5" (3,8 cm) Blade Width: 1.25" (32 mm) Blade Depth: 2.375" (60 mm)
4696-07	[Adjustable Lock Block] Dimensions: 1.375" x 1" x .85" (35 mm x 25 mm x 20 mm)
4696-Frame	[Frame Assembly] Dimensions: 10" x 9" (25,4 cm x 22,9 cm)

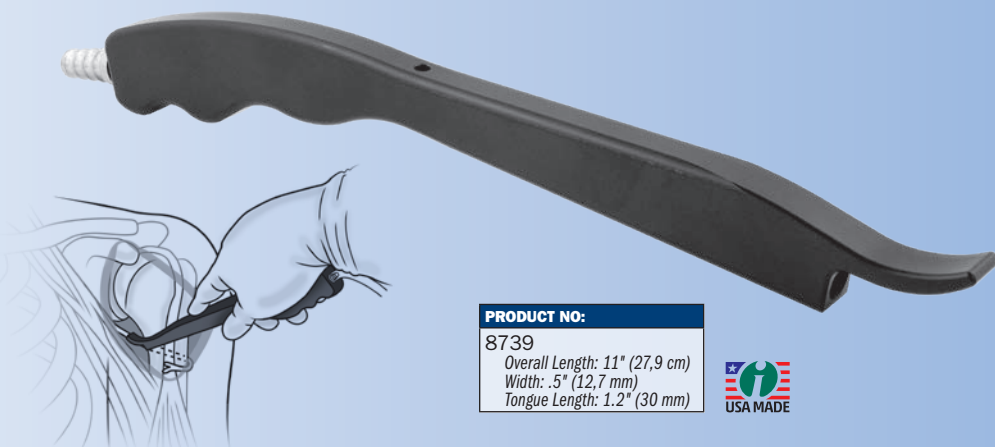


Bacastow Axillary Nerve Retractor with Suction

Designed by David Bacastow, MD

Designed with a curved tip to slip all the way under the capsule during shoulder surgery, helping to protect the axillary nerve, while also providing suction of smoke away from the surgical site

Made of autoclavable Radel material, the unit is non-conductive of current and resists the high temperatures associated with the use of electrocautery.



PRODUCT NO:	
8739	
Overall Length: 11" (27,9 cm)	
Width: .5" (12,7 mm)	
Tongue Length: 1.2" (30 mm)	





Hawkins Shoulder Instruments

Designed by Richard J. Hawkins, MD

Designed to enhance exposure during shoulder arthroplasty procedures

PRODUCT NO'S:	
5090	[Small Spreader w/Articular Arms] Overall Length: 6.25" (15,9 cm) Arm Depth: 2.25" (5,7 cm) Prong Width: 21 mm Prong Length: 16 mm
5091	[Large Spreader w/Articular Arms] Overall Length: 10.5" (26,7 cm) Arm Depth: 2.375" (6 cm) Prong Width: 23 mm Prong Length: 23 mm
5092	[Anterior Capsular Retractor] Overall Length: 11.25" (28,6 cm) Handle Length: 5.25" (13,3 cm) Blade Depth: 3.25" (8,3 cm) Blade Width: 19 mm
5093	[Small Pectoralis Retractor] Overall Length: 10.25" (26 cm) Handle Length: 5.25" (13,3 cm) Blade Depth: 2.5" (6,4 cm) Blade Width: 25 mm
5094	[Extra Small Pectoralis Retractor] Overall Length: 11" (27,9 cm) Handle Length: 5.25" (13,3 cm) Blade Depth: 1.5" (3,8 cm) Blade Width: 25 mm
5095	[Cobb Elevator] Overall Length: 11" (27,9 cm) Handle Length: 5.5" (14 cm) Blade Width: 19 mm
5096	[Humeral Head Retractor] Overall Length: 9" (22,9 cm) Blade Depth: 2.75" (7 cm) Blade Width: 37 mm
5097	[Anterior Glenoid Retractor] Overall Length: 11" (27,9 cm) Blade Depth: 2.75" (7 cm) Blade Width @ Fat Pad: 34 mm Blade Width @ Neck: 18 mm
5098	[Deltoid Retractor] Overall Length: 9.5" (24,1 cm) Blade Depth: 3.75" (9,5 cm) Blade Width @ Fat Pad: 45 mm Blade Width @ Neck: 32 mm
5099	[Modified Darrach Retractor] Overall Length: 10.75" (27,3 cm) Blade Width: 19 mm



Axillary Nerve Protector

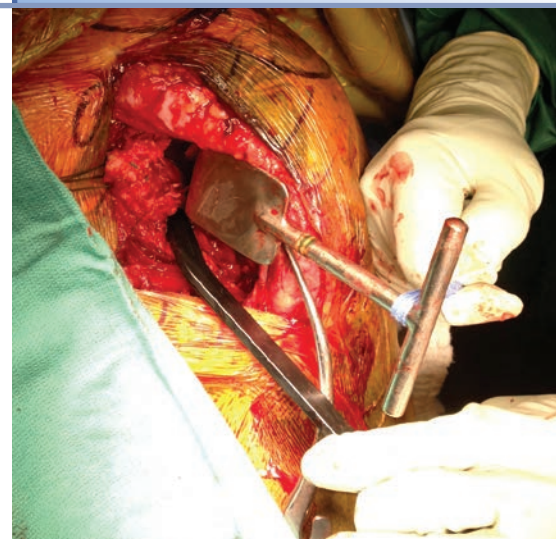
Designed by Brett Sanders, MD

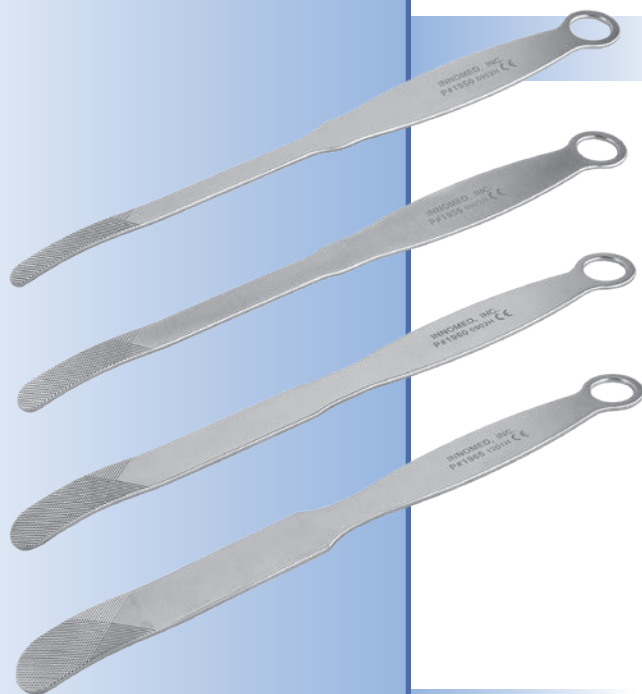
Designed for inferior capsular release during shoulder arthroplasty and glenoid exposure

The tapered freer end helps separate the axillary nerve and inferior capsule, even in difficult exposures. Non-conductive material allows the use of a bovie knife directly in the small channel cutting guide (on both sides). Reversible for right and left use.



PRODUCT NO:	
8029	
Overall Length: 7.125" (18,1 cm)	
Width: 12 mm	
Thickness: 4 mm	



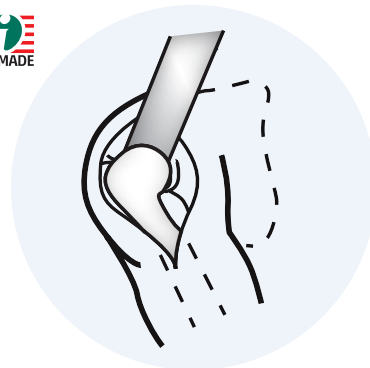


Modified Darrach-type Elevators

Available in four widths. Used for soft tissue retraction and exposure. May also be used to lever the humeral head inferiorly or superiorly and medially to expose the humeral head from the glenoid while dislocating the humeral head after subcapularis removal. May also be used to retract the humeral shaft posteriorly to help expose the glenoid.

PRODUCT NO'S:

1950 [3/8" (10 mm)] Blade Width: 10 mm Overall Length: 10.75" (27,3 cm)
1955 [1/2" (13 mm)] Blade Width: 12 mm Overall Length: 10.75" (27,3 cm)
1960 [3/4" (19 mm)] Blade Width: 19 mm Overall Length: 10.75" (27,3 cm)
1965 [1.0" (25 mm)] Blade Width: 25 mm Overall Length: 10.75" (27,3 cm)

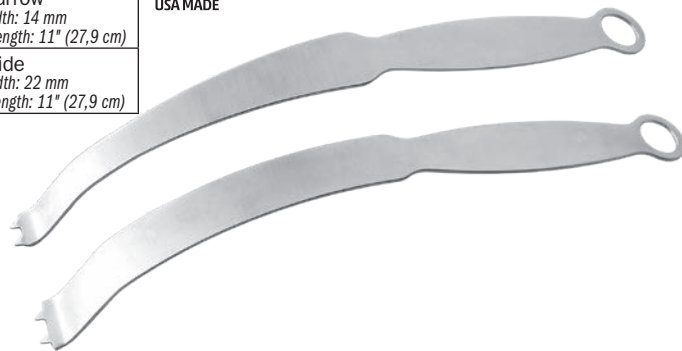


Thin Glenoid Retractors

Available in narrow and wide sizes. Used for retraction of the anterior and posterior aspects of the anterior and posterior glenoid rim.

PRODUCT NO'S:

1910 Narrow Blade Width: 14 mm Overall Length: 11" (27,9 cm)
1920 Wide Blade Width: 22 mm Overall Length: 11" (27,9 cm)

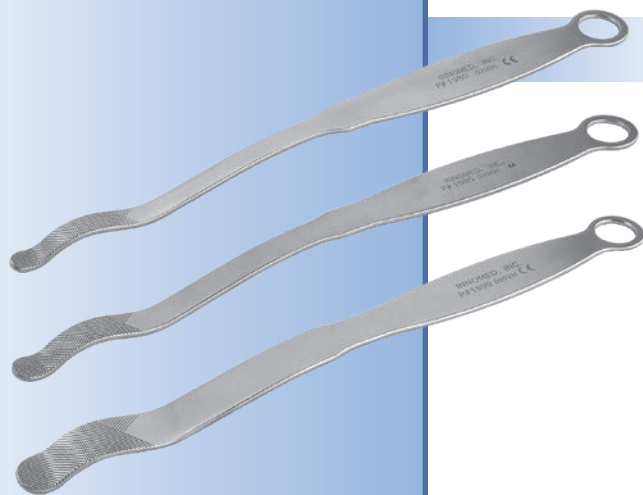
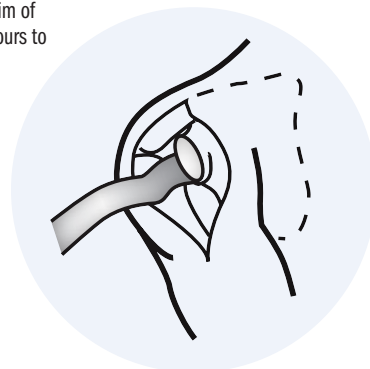


Posterior Glenoid Elevators

Available in three widths. Used to help expose the posterior aspect of the glenoid. The curved tip allows the elevator to fit on the posterior rim of the glenoid. The curve in the elevator contours to the humeral shaft for posterior retraction.

PRODUCT NO'S:

1980 [3/8" (10 mm)] Blade Width: 10 mm Overall Length: 11" (27,9 cm)
1985 [1/2" (13 mm)] Blade Width: 12 mm Overall Length: 11" (27,9 cm)
1990 [3/4" (19 mm)] Blade Width: 19 mm Overall Length: 11" (27,9 cm)



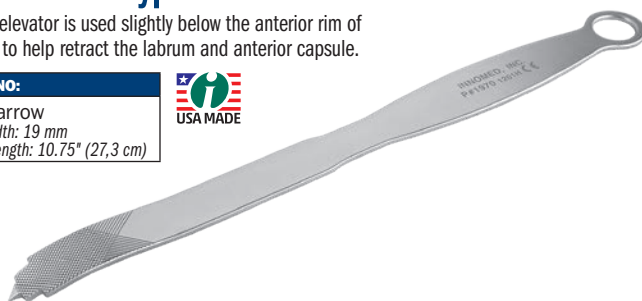


Spiked Darrach-type Elevator

The spiked elevator is used slightly below the anterior rim of the glenoid to help retract the labrum and anterior capsule.

PRODUCT NO'S:

1970 Narrow
Blade Width: 19 mm
Overall Length: 10.75" (27,3 cm)



Bicep Elevator

Used to help retract the biceps tendon superiorly. The two extensions allow the long head of the biceps to fit between them. The edges fit on the superior portion of the glenoid rim.

PRODUCT NO'S:

1975
Blade Width: 25 mm
Overall Length: 10.75" (27,3 cm)



Modified Fukuda-type Retractors

Available in small and large sizes. Used to retract the humeral shaft posteriorly and helping to expose the entire glenoid surface.

PRODUCT NO'S:

1930 Narrow
Blade Width: 32 mm
Opening: 25 x 40 mm
Overall Length: 7.25" (18,4 cm)

1940 Wide
Blade Width: 38 mm
Opening: 32 x 40 mm
Overall Length: 7.25" (18,4 cm)



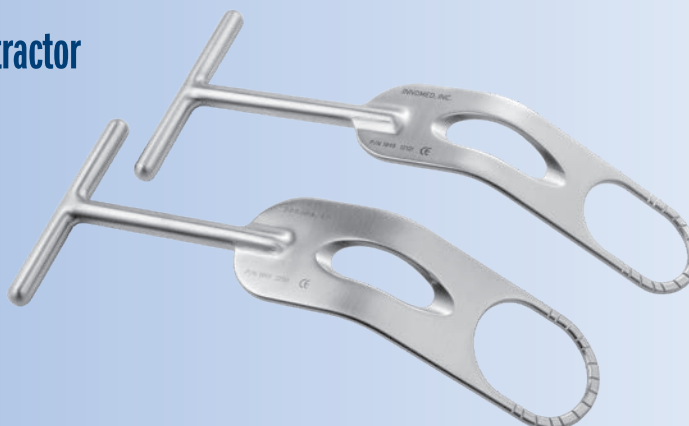
Modified Fukuda-type Retractor with Reamer Slot

Designed by Richard J. Miller, MD

PRODUCT NO'S:

1898 [Narrow]
Overall Length: 7.25" (18,4 cm)
Blade Width: 32 mm
Opening: 25 x 40 mm

1899 [Wide]
Overall Length: 7.25" (18,4 cm)
Blade Width: 38 mm
Opening: 32 x 40 mm



Center cutout slot allows the shaft of a reamer to fit more posteriorly

Not included in Set

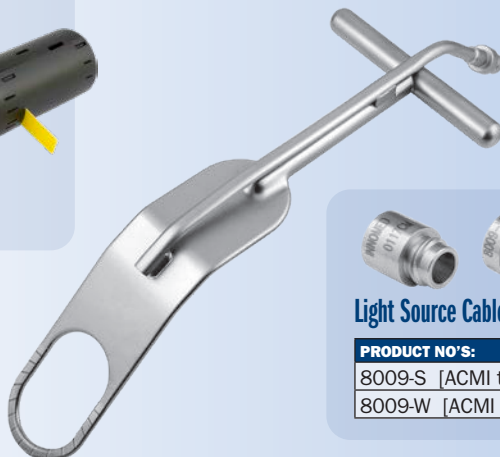
Disposable LED Light Source



PRODUCT NO'S:

8010-01 **Package of 1**
Overall Length: 2.5" (6.4 cm)
Diameter: 1" (2.54 cm)

8010-10 **Package of 10**



Light Source Cable Adapters



PRODUCT NO'S:

8009-S [ACMI to Storz Adapter]

8009-W [ACMI to Wolf Adapter]

Lighted Fukuda-type Retractors

Designed by Evan Flatow, MD & Louis Bigliani, MD

Used to retract the humeral shaft posteriorly and helping to expose the entire glenoid surface, the lighting attachment helps provide enhanced visual exposure

Comes with one (1) Disposable LED Light Source (#8010-01).

Can also be attached to a fiber optic light cable with ACMI (female) connector. Retractors can be steam sterilized.



PRODUCT NO'S:

1930-L-01 [Lighted Narrow]

Blade Width: 32 mm

Opening: 25 x 40 mm

Overall Length: 8.75" (22.2 cm)

1940-L-01 [Lighted Wide]

Blade Width: 38 mm

Opening: 32 x 40 mm

Overall Length: 8.75" (22.2 cm)

Modified Winged Fukuda Retractor

Designed by Scot Rheinecker, PA

Designed with flared edges for less pressure on soft tissues

PRODUCT NO:

1896

Overall Length: 7.5 (19.1 cm)

Blade Width: 36 mm

Opening: 29 x 40 mm



Half Ring Fukuda-type Retractor

Designed by Brett Sanders, MD

Modified fukuda designed to improve glenoid access and labral removal during arthroplasty

Can be shifted medial-lateral or superior-inferior to facilitate posterior labral removal and relieve reamer impingement.

PRODUCT NO:

5168

Overall Length: 7.25" (18.4 cm)

Blade Width: 1.25" (32.5 cm)

Blade End Gap: .675" (17.1 cm)



Evans Modified Fukuda-type Retractors

Designed by Peter J. Evans, MD

Designed to retract the humeral shaft posteriorly, helping to expose the glenoid surface

Center groove allows a reamer shaft to fit more posteriorly.

PRODUCT NO'S:

5180-N [Narrow]

Overall Length: 8.625" 21.9 cm)

Blade Width: 1" (25.4 mm)

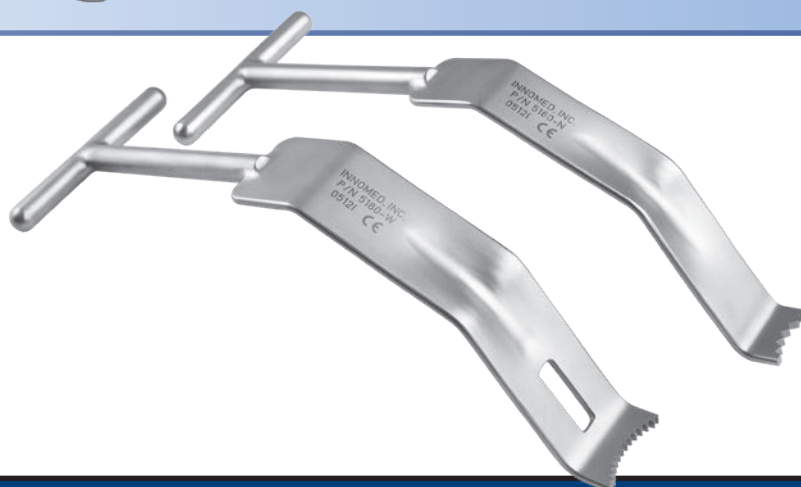
Blade Depth: 3.75" (9.5 cm)

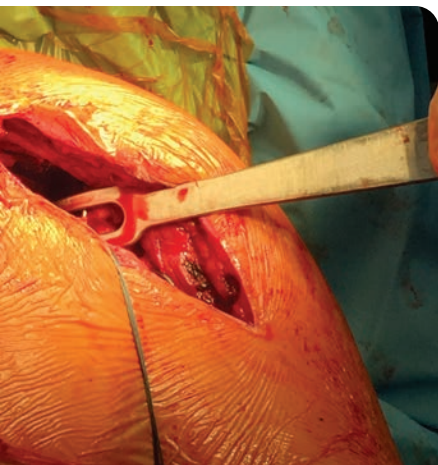
5180-W [Wide]

Overall Length: 8.625" 21.9 cm)

Blade Width: 1.25" (31.7 mm)

Blade Depth: 3.75" (9.5 cm)





Glenosphere Component Retractor

Designed by Tim Seachris

Designed for use in total and reverse shoulder arthroplasty

Coated version helps to protect component surfaces.



PRODUCT NO:

5841 [Coated End]
Overall Length: 10.25" (26,7 cm)
Blade Width: .9375" (2,4 cm)

5841-01 [Uncoated End]
Overall Length: 10.25" (26,7 cm)
Blade Width: .9375" (2,4 cm)



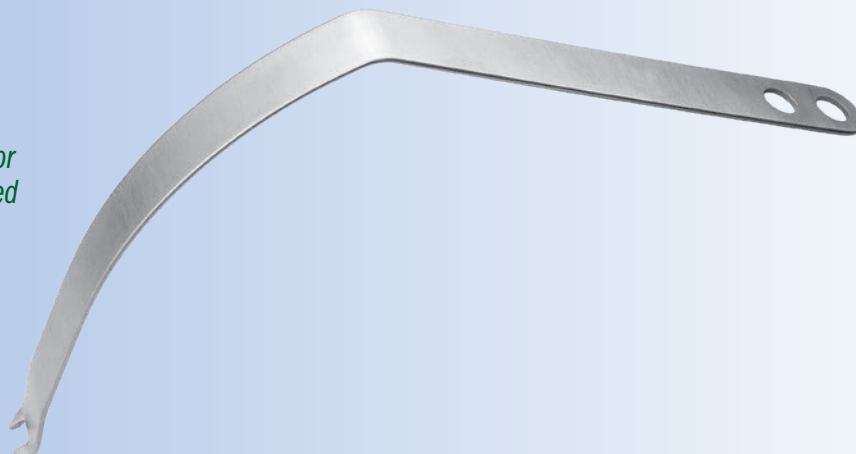
Levy Anterior Glenoid Retractor

Designed by Jonathan Levy, MD

Designed to help alleviate tension on anterior glenoid structures and the handle is designed to optionally be clamped to the drape

PRODUCT NO:

4536
Overall Length: 10.5" (26,7 cm)
Depth from Bend: 5.875" (14,9 cm)
Blade Width: .75" (1,9 cm)
Tooth Gap: .325" (8,2 mm)



Gunther Glenoid Retractor

Designed by Stephen B. Gunther, MD

Ergonomic design helps to retract the humeral head posteriorly during glenoid exposure while avoiding reamer contact during shoulder replacement surgery

PRODUCT NO:

1999
Overall Length: 11" (27,9 cm)
Neck Width: .625" (15,9 mm)
Prong Outside Width: 1" (25,4 mm)
Prong Inside Width: .625" (15,9 mm)



Evans Reverse Hohmann Retractor

Designed by Peter J. Evans, MD

Designed for total shoulder arthroplasty and open rotator cuff procedures

Smaller size useful for retracting the deltoid muscle and other structures.



PRODUCT NO:

4547
Overall Length: 8.5" (21,6 cm)
Blade Width: Tapers from 30 mm to 18 mm
Blade Depth: 3" (7,6 cm)
Prong Width: 6 mm



Capsule Retractors

Retractors for use in Bankart surgery

The single prong retractor is commonly used when retracting on the inferior rim of the glenoid. The two and three-prong retractors are designed to be placed medially along the scapular neck to retract the anterior capsule and labrum.

PRODUCT NO'S:

T1008-01 [3 Prongs]
Overall Length: 10" (25,4 cm)
Prong Length: 30 mm

T1008 [2 Prongs]
Overall Length: 10" (25,4 cm)
Prong Length: 30 mm

T1009 [1 Prong]
Overall Length: 10" (25,4 cm)
Prong Length: 30 mm



Deltoid Retractor

Fits easily under the acromion, deltoid and over the humeral head

► Used in most open procedures

PRODUCT NO:

T1001
Width: 30 mm
Overall Length: 8" (20,3 cm)



Humeral Head Retractor

Placed between the glenoid and the humeral head to obtain excellent exposure

PRODUCT NO:

T1007
Blade Width: 33 mm
Prong Width: 6 mm | 21 mm Gap | 6 mm
Overall Length: 7" (17,8 cm)

MADE FOR INNOMED IN GERMANY



Kirschenbaum Acromioplasty Retractor

Designed by Ira Kirschenbaum, MD

Helps to protect both the posterior aspect of the shoulder and the articular surface of the humeral head during open acromioplasty and rotator cuff surgery

Designed to fit under the posterior edge of the acromion and lever the humeral head down out of the way.

PRODUCT NO:

5840
Overall Length: 9.25" (23,5 cm)
Blade Width at Tip: 21 mm





Posterior Glenoid Neck Retractor

Used during osteotomy of the humeral head and approaches to the glenoid

- Designed to allow one finger retraction
- Contours to allow teeth to fit behind the glenoid, retracting tissue for easy access to the glenoid

PRODUCT NO:

T1002

Width: 30 mm

Overall Length: 10" (25,4 cm)



Anterior Glenoid Neck Retractor

Teeth are specifically designed to retract the subscapularis and capsule medially during a Bankart procedure

- The wide midsection retracts the soft tissue during anterior glenoid work
- The curved handle allows the assistant to use minimal pressure to achieve exposure

PRODUCT NO:

T1003

Width: 25 mm

Overall Length: 11" (27,9 cm)



Goldstein Glenoid Neck Retractor

Placed along the glenoid rim during open Bankart procedure to allow excellent exposure

- The convex teeth sit easily into the glenoid rim while the strong end of the shaft allows the instrument to stay out of the surgeons view

PRODUCT NO:

T1004

Blade Width at Teeth: 18 mm

Blade Width at Widest: 36 mm

Overall Length: 8.5" (21,6 cm)



Acromioplasty Retractor

Designed to retract and protect the humeral head during resection of the inferior acromial surface

The two prongs hook the posterior aspect of the acromion for retraction. The file is used to smooth rough edges of the acromion post-resection.

PRODUCT NO:

S3008

Overall Length: 9" (22,9 cm)

Blade Width: 18 mm

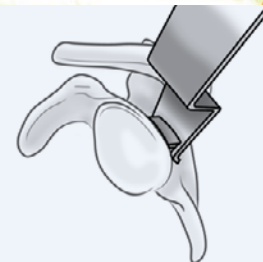
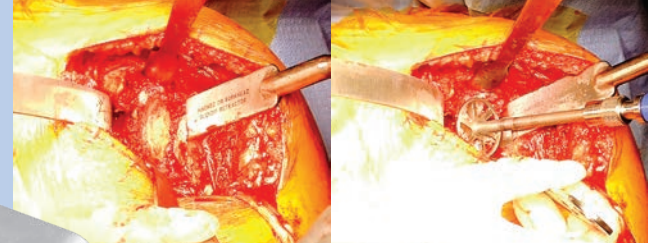
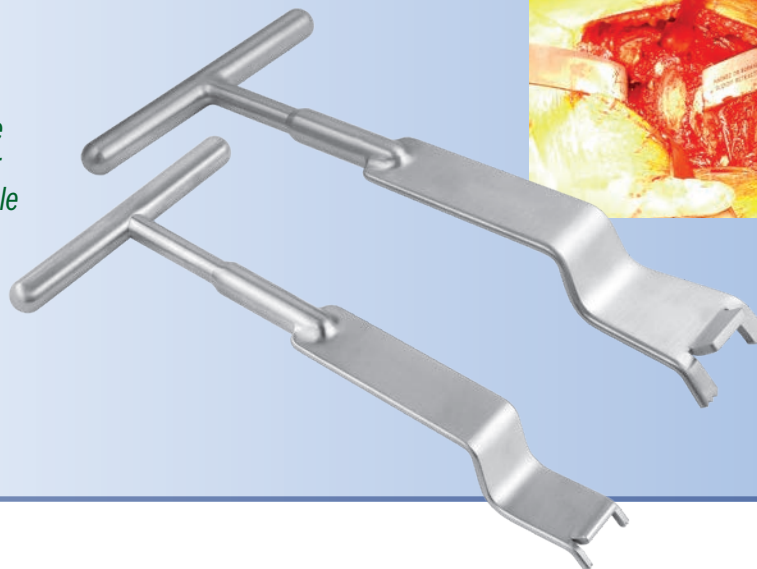


Burkhead Glenoid Retractor

Designed by Wayne Burkhead, MD

The retractor bar presses against the glenoid while the end of the retractor puts pressure on the posterior capsule

PRODUCT NO'S:	
5839 [Large]	
Overall Length: 9.125" (23,2 cm)	
Blade Width at End: 1.5" (3,8 cm)	
5839-SM [Small]	
Overall Length: 8.75" (22,2 cm)	
Blade Width at End: 1" (2,54 cm)	



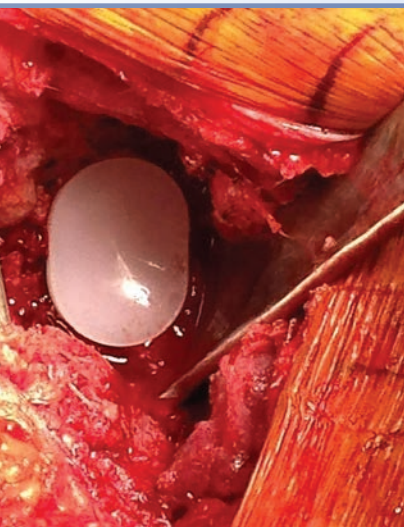
George Semi-Circumferential Glenoid Retractor

Designed by Michael S. George, MD

Designed to depress the humeral head and retract tissue away from the posterior half of the glenoid, helping to improve exposure for the preparation and placement of the glenoid component in total shoulder arthroplasty



PRODUCT NO:	
2435	
Overall Length: 8" (20,3 cm)	
Blade Width: 2.125" (5,4 cm)	



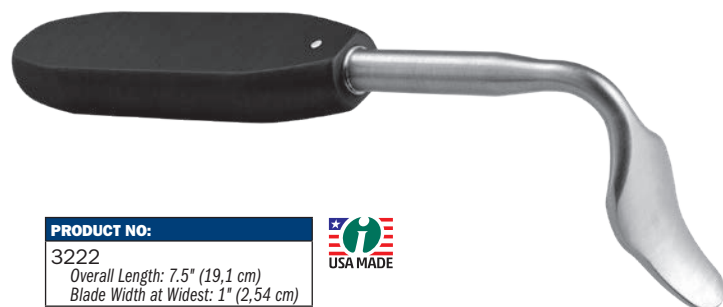
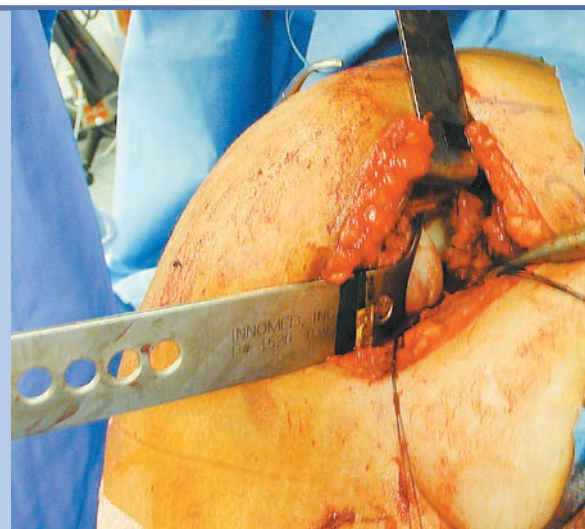
Humeral Head Depressor

Designed by William J. Mallon, MD

Used to help expose the glenoid fossa

Placed over the humeral head and hooked around the posterior lip of the glenoid rim, to expose the glenoid fossa for total shoulder reconstruction and reconstructive stabilization procedures done through a standard delto-pectoral approach.

PRODUCT NO:	
1520	
Overall Length: 8" (20,3 cm)	



PRODUCT NO:	
3222	
Overall Length: 7.5" (19,1 cm)	
Blade Width at Widest: 1" (2,54 cm)	



Bolanos Shoulder Retractor

Designed by Alberto Bolanos, MD

Designed for mini-open rotator cuff repairs and shoulder arthroplasty, the contour matches the humeral head and the rounded edge helps avoid trauma to surrounding musculature

Depth matches girth of most patients, while the comfortable handle makes it easier for assistants to hold.

Burkhead Reversible TSA/RSA Retractor

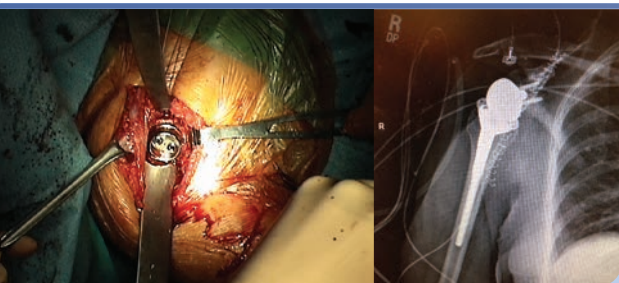
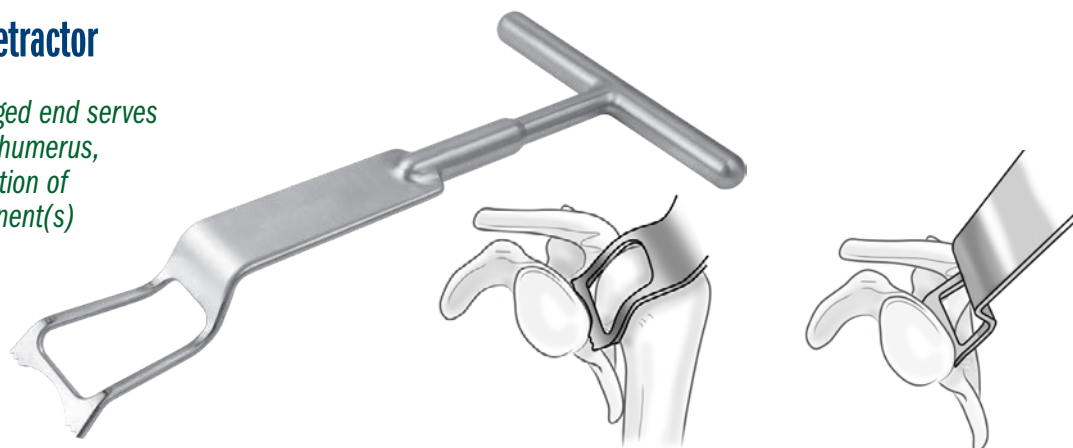
Designed by Wayne "Buzz" Burkhead, Jr, MD

Unique shape, angles and double pronged end serves to push the posterior capsule, and the humerus, away from the glenoid to allow preparation of the glenoid and implantation of component(s) without having to remove the retractor

PRODUCT NO:

5839-01

Overall Length: 9.125" (23,2 cm)
Blade Width at End: 1.5" (3,8 cm)



Designed for glenoid exposure, particularly for reverse shoulder replacement applications, where it is important to get inferiorly

Allows visualization and direct access to the glenosphere base plate through a deltopectoral incision with intact pectoralis major insertion.

Bacastow Glenoid Retractors

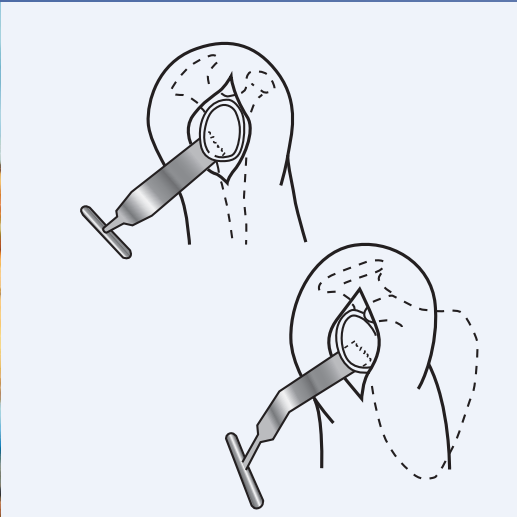
Designed by David Bacastow, MD



PRODUCT NO'S:

1897-L [Left]
Overall Length: 11.75" (29,8 cm)

1897-R [Right]
Overall Length: 11.75" (29,8 cm)



Agrawal Talon Retractor

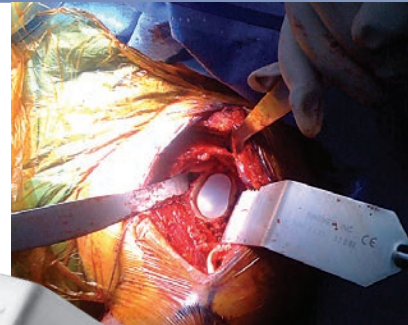
Designed by Vivek Agrawal, MD

Designed to help facilitate glenoid exposure in total shoulder arthroplasty

PRODUCT NO:

4695

Overall Length: 7.875" (20 cm)
Blade Width: 40.7 mm



Chandler Retractor

Used for retracting tissue away from the bone

The handle is contoured away from the field of view and working area. Available in three blade sizes: 5/8", 3/4", and 1".

Carbon fiber material is strong, lightweight, completely radiolucent, helps to prevent from scratching component surfaces, and can be steam sterilized.



PRODUCT NO'S:

3220-01 [5/8"] (15,9 mm)
Overall Length: 9.125" (23,5 cm)
Blade Width: 16 mm

3220-02 [3/4"] (19 mm)
Overall Length: 9.125" (23,5 cm)
Blade Width: 19 mm

3220-04 [1"] (25,4 mm)
Overall Length: 9.125" (23,5 cm)
Blade Width: 25.4 mm

3220-02R* [Radiolucent 3/4"] (19 mm)
Overall Length: 9.125" (23,5 cm)
Blade Width: 19 mm



Mehalik Posterior Glenoid Retractor with Long Handle

Designed in collaboration with Mayo Clinic, modified by John Mehalik, MD.

Designed to help expose the posterior aspect of the glenoid

PRODUCT NO:

1909

Overall Length: 13.2" (33.5 cm)

Access Hole Internal Diameter: 36 X 30 mm



New!



McFarland Shoulder V Retractor

Designed by Edward McFarland, MD

Designed to provide deep access to the glenoid rim when performing a subscapularis splitting approach to the shoulder

Fluted to enhance visualization and room when placing sutures in the capsular flaps prior to placing three prong retractors.

PRODUCT NO:

4851

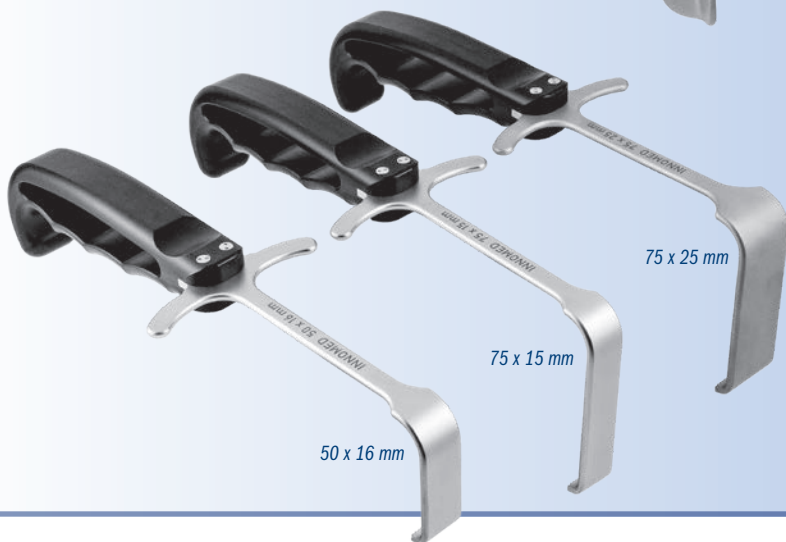
Overall Length: 9" (22.9 cm)

Length To Bend: 8.5" (21.6 cm)

Handle Length: 4" (10.2 cm)

Blade Depth: 2.75" (7 cm)

Blade Width: .625" (1 cm)



Meyerding Type Retractors with Ergonomic Handle

Designed for general use soft tissue retraction, the ergonomic handle allows for a better grip and less fatigue

Non-glare finish featured on the metal retractor parts.



PRODUCT NO'S:

6241 [50 x 16 mm]
Overall Length: 8.875" (22.5 cm)
Blade Width: 16 mm
Blade Depth: 50 mm

6242 [75 x 15 mm]
Overall Length: 9" (22.9 cm)
Blade Width: 15 mm
Blade Depth: 75 mm

6243 [75 x 25 mm]
Overall Length: 9" (22.9 cm)
Blade Width: 25 mm
Blade Depth: 75 mm

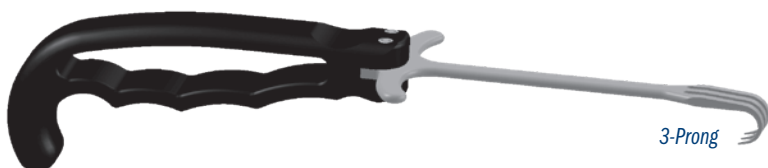
Rake Retractors with Ergonomic Handle

Designed for general use soft tissue retraction

PRODUCT NO'S:

4839 [3-Prong]
Overall Length: 9.5" (24.1 cm)
Rake Width: 13 mm
Rake Depth: 14 mm

4840 [4-Prong]
Overall Length: 9.5" (24.1 cm)
Rake Width: 19 mm
Rake Depth: 14 mm



3-Prong



4-Prong



Levy Wide Deltoid Retractor

Designed by Jonathan Levy, MD

Designed for management of proximal humerus fractures—facilitates appropriate deltoid retraction without interference during active fluoroscopy

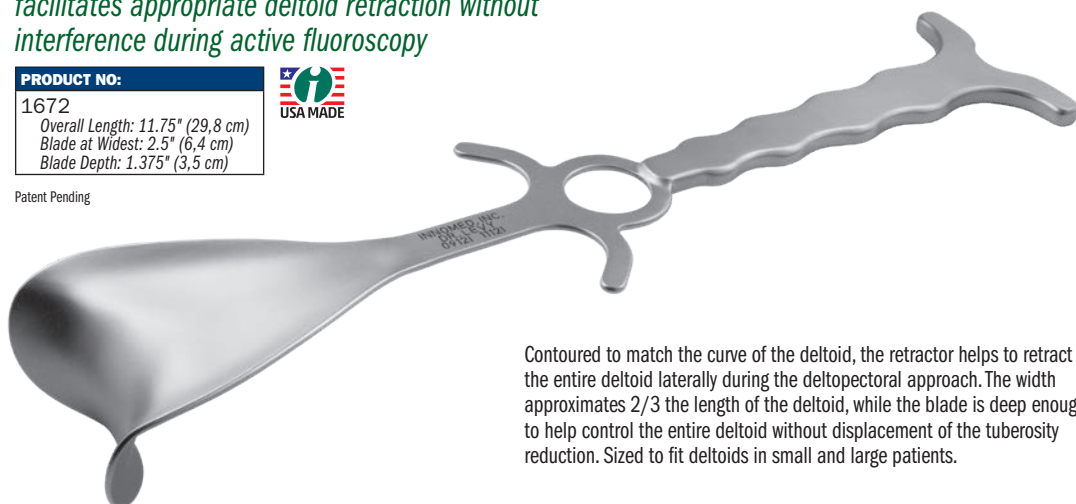
PRODUCT NO:

1672

Overall Length: 11.75" (29,8 cm)
Blade at Widest: 2.5" (6,4 cm)
Blade Depth: 1.375" (3,5 cm)



Patent Pending



Contoured to match the curve of the deltoid, the retractor helps to retract the entire deltoid laterally during the deltopectoral approach. The width approximates 2/3 the length of the deltoid, while the blade is deep enough to help control the entire deltoid without displacement of the tuberosity reduction. Sized to fit deltoids in small and large patients.

Kaminsky Radiolucent Browne-type Deltoid Retractors

Used for the Delto-Pectoral Approach—can remain in place for fracture reduction, plate positioning, and screw/wire/drill location confirmation

Designed by Sean B. Kaminsky, MD

Contours the humeral head with deltoid retraction allowing extensive exposure. Helps to reduce operative time, assist in fracture reduction, and maintain hardware position without the frequent need for retractor removal and reintroduction. Also helps to prevent from scratching component surfaces.

PRODUCT NO'S:

1670-01R [Small]

Blade Width: 45 mm

Overall Length: 11.5" (29,2 cm)

1670-02R [Large]

Blade Width: 57 mm

Overall Length: 11.5" (29,2 cm)

MADE EXCLUSIVELY
FOR INNOVIM IN
SWITZERLAND

Made of lightweight carbon fiber PEEK composite material—strong, completely radiolucent, and can be steam sterilized



Browne Deltoid Retractor

Used for the Delto-Pectoral Approach

Contours the humeral head with effortless deltoid retraction allowing extensive exposure.

PRODUCT NO'S:

1670-01 [Small]

Blade Width: 45 mm

Overall Length: 11.5" (29,2 cm)

1670-02 [Large]

Blade Width: 57 mm

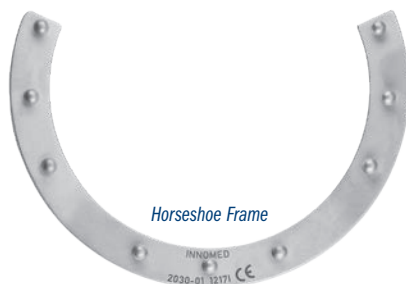
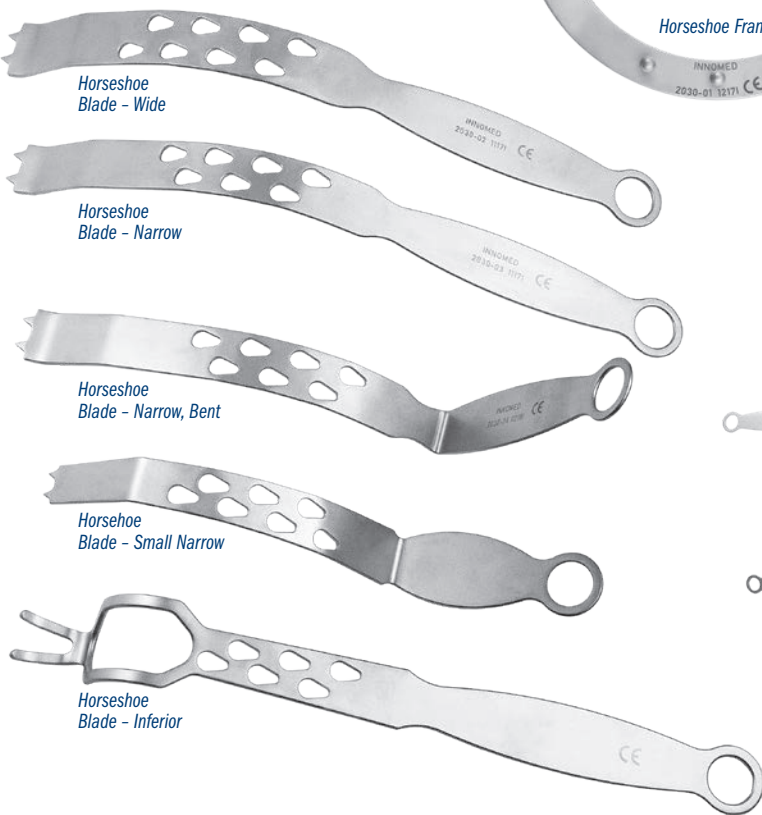
Overall Length: 11.5" (29,2 cm)

MADE FOR INNOVIM IN
GERMANY

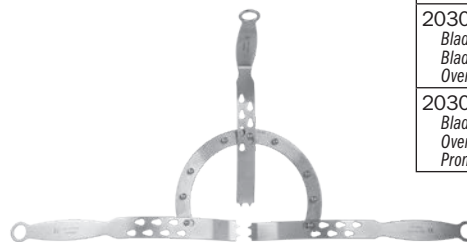


Horseshoe Shoulder Frame and Blade Assembly

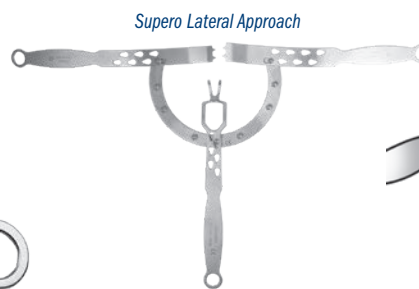
Designed to enhance exposure during shoulder arthroplasty procedures



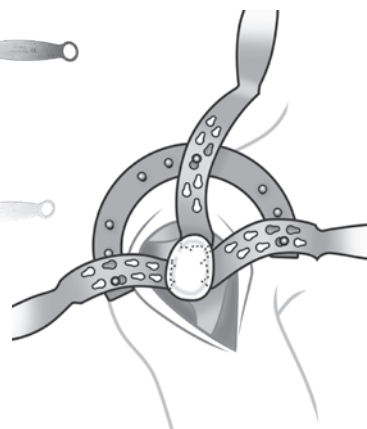
Horseshoe Frame



Delta Pectoral Approach



Supero Lateral Approach



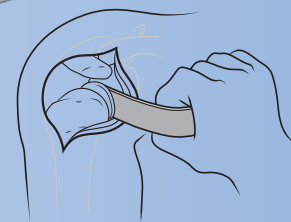
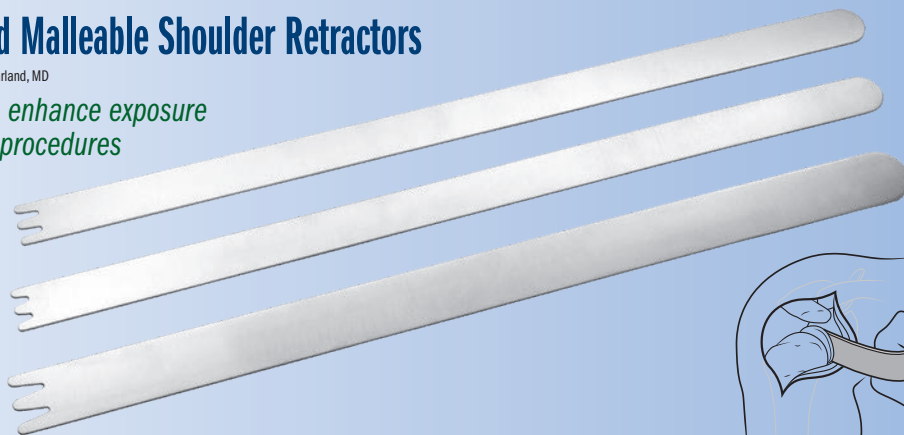
PRODUCT NO'S:	
2030-00 [Set]	Includes the frame and the five blades
Also available individually:	
2030-01 [Horseshoe Frame]	Overall Dimensions: 7" x 5" (17,8 cm x 12,7 cm) Frame Width: .7" (15 mm)
2030-02 [Blade – Wide]	Blade Width: 22 mm Overall Length: 11" (27,9 cm)
2030-03 [Blade – Narrow]	Blade Width: 14 mm Overall Length: 11" (27,9 cm)
2030-04 [Blade – Narrow, Bent]	Blade Width: 14 mm Overall Length: 10" (25,4 cm) Handle Length: 4.5" (11,4 cm)
2030-05 [Blade – Small Narrow]	Blade Width: 16 mm Blade Depth: 2" Overall Length: 8.5" (21,6 cm)
2030-06 [Blade – Inferior]	Blade Width: Outside 34 mm, Inside 24 mm Overall Length: 11.5" (29,2 cm) Prong Length: 28 mm



McFarland Malleable Shoulder Retractors

Designed by Edward McFarland, MD

Designed to enhance exposure in shoulder procedures



PRODUCT NO'S:	
4537-00 [Set of Three Sizes]	
Also available individually:	
4537-01 [Narrow Deep]	Overall Length: 15.5" (39,4 cm) Prong Depth: 10 mm
4537-02 [Narrow Shallow]	Overall Length: 15.5" (39,4 cm) Prong Depth: 6.8 mm
4537-03 [Wide]	Overall Length: 15.5" (39,4 cm) Prong Depth: 13.5 mm



McFarland Bent Cobb Elevator

Designed by Edward McFarland, MD

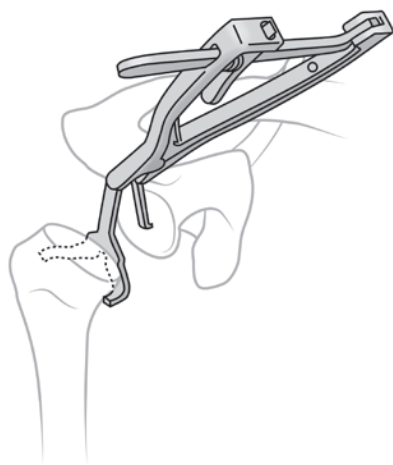
Designed for retraction while helping to protect the axillary nerve in shoulder surgery

Ultra hard titanium nitride coating helps to prolong sharpness.



PRODUCT NO:	
3431	
Overall Length: 9.5" (24,1 cm) Length from Bend: 3.5" (8,9 cm) Cobb End Width: .8" (20 mm) Angle of Bend: 30°	



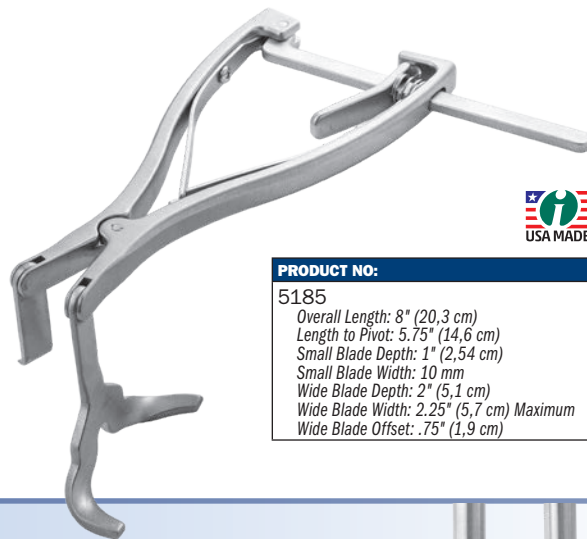


Bacastow Shoulder Capsular Retractor

Designed by David Bacastow, MD

Designed to help place tension on the inferior capsule for improved visualization and dissection when performing anatomic or reverse shoulder replacement

Rotating arms allow left or right use. Can be used in conjunction with Axillary Nerve Retractor with Suction (#8739 - Page 4) for additional safety.



PRODUCT NO:

5185

Overall Length: 8" (20,3 cm)
Length to Pivot: 5.75" (14,6 cm)
Small Blade Depth: 1" (2,54 cm)
Small Blade Width: 10 mm
Wide Blade Depth: 2" (5,1 cm)
Wide Blade Width: 2.25" (5,7 cm) Maximum
Wide Blade Offset: .75" (1,9 cm)



Durham Offset Zelpi Retractor

Designed by Alfred Durham, MD

Staggered depth retractor designed for exposure during total hip and total shoulder surgery

- ▶ In hip surgery, with the handle towards the surgeon, the longer leg is on the inside
- ▶ In shoulder surgery, with the handle downward, the longer leg is on the outside
- ▶ The longer leg extends 1.1" (2,8 cm) deeper



PRODUCT NO'S:

1573-L [Left]

Overall Length: 8.5" (21,6 cm)
Leg Depths: 3.1" & 4.2" (7,9 cm & 10,7 cm)

1573-R [Right]

Overall Length: 8.5" (21,6 cm)
Leg Depths: 3.1" & 4.2" (7,9 cm & 10,7 cm)



Gerber Sub-Acromion Spreaders

Designed to gain optimal access to the subacromion space

Designed to gain optimal access to the subacromion space by distracting inferiorly the humeral head from the acromion.

PRODUCT NO'S:

Standard

Modified

1640-01 [Right]

Blade Length: 19 mm
Inside Ring Dia.: 32 mm
Overall Length: 7" (17,8 cm)

1641-01 [Right]

Blade Length: 34 mm
Inside Ring Dia.: 25 mm
Overall Length: 7" (17,8 cm)

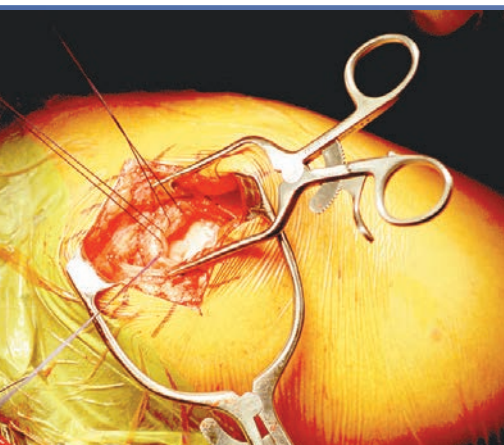
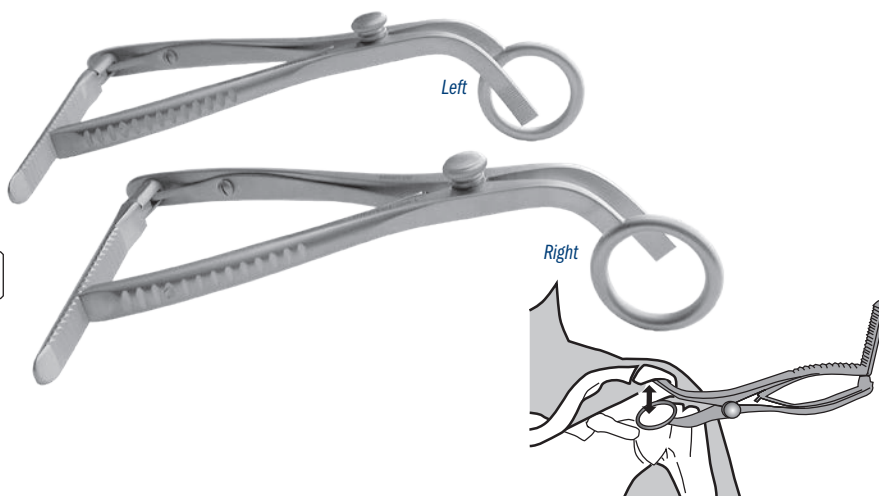
1640-02 [Left]

Blade Length: 19 mm
Inside Ring Dia.: 32 mm
Overall Length: 7" (17,8 cm)

1641-02 [Left]

Blade Length: 34 mm
Inside Ring Dia.: 25 mm
Overall Length: 7" (17,8 cm)

MADE EXCLUSIVELY
FOR INNOVIMED IN
GERMANY



Hendren Self-Retaining Retractor

Designed by D.H. Hendren, MD

Gentle on tissue and very effective in holding back subcutaneous fat

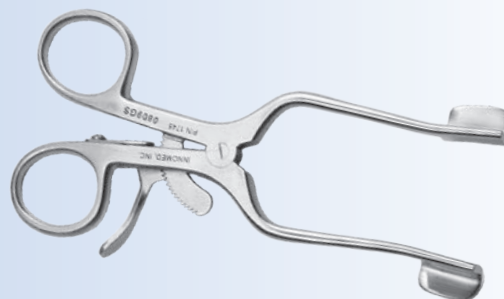
Also useful for retracting the deltoid muscle firmly.

PRODUCT NO:

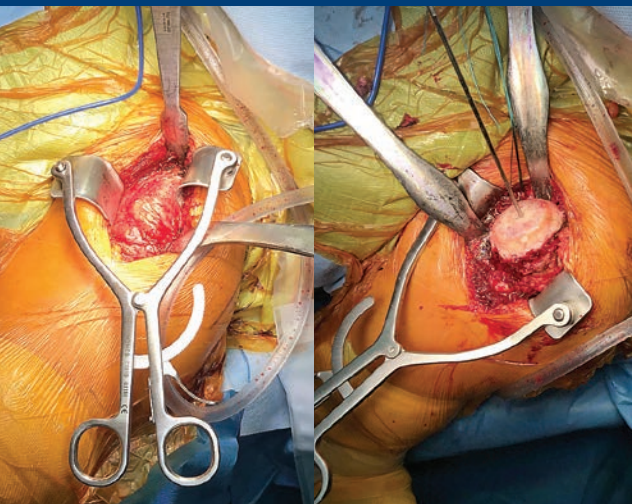
1745

Overall Length: 5.5" (14 cm)
Blade Size: 18 mm x 13 mm

MADE EXCLUSIVELY
FOR INNOVIMED IN
GERMANY



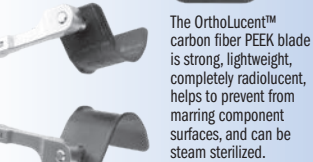
Kolbel Self-Retaining Glenoid Retractors



Kolbel Self-Retaining Retractor Blades

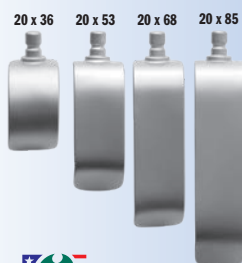


Radiolucent Blades



The OrthoLuent™ carbon fiber PEEK blade is strong, lightweight, completely radiolucent, helps to prevent from marring component surfaces, and can be steam sterilized.

PRODUCT NO'S:	
Wide Blades	
T1018	[36 x 36 mm]
T1019	[36 x 53 mm]
T1020	[36 x 68 mm]
T1021	[36 x 85 mm]
Radiolucent Blade	
T1019-R*	[36 x 53 mm]

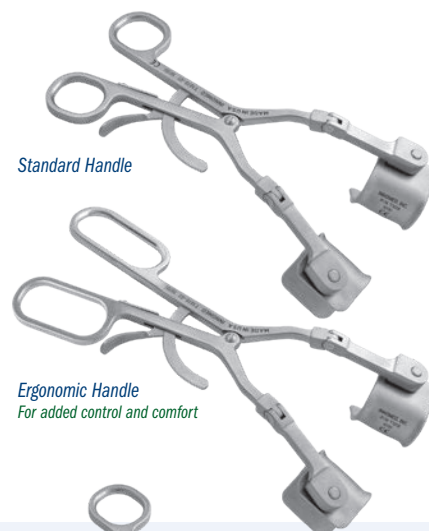


Narrow Blades	
T1022	[20 x 36 mm]
T1023	[20 x 53 mm]
T1024	[20 x 68 mm]
T1025	[20 x 85 mm]

Modified Kolbel Self-Retaining Glenoid Retractor with Hinge

Two pairs of snap-in, freely pivoting blades included.

PRODUCT NO'S:	
T1014-01	[Set – Standard Handle]
T1014-01-2F	[Set – Ergonomic Handle]
Set Includes:	
T1015-01	[Retractor – Standard Handle] Overall Length: 8.25" (21 cm) Length-to-hinge: 6" (15,2 cm) Arm Length: 2.25 (5,7 cm)
– OR –	
T1015-01-2F	[Retractor – Ergonomic Handle] Overall Length: 9.25" (23,5 cm) Length-to-hinge: 7" (17,8 cm) Arm Length: 2.25 (5,7 cm)
T1018-P	[Blades–Pair] 36 mm X 36 mm
T1019-P	[Blades–Pair] 36 mm X 53 mm



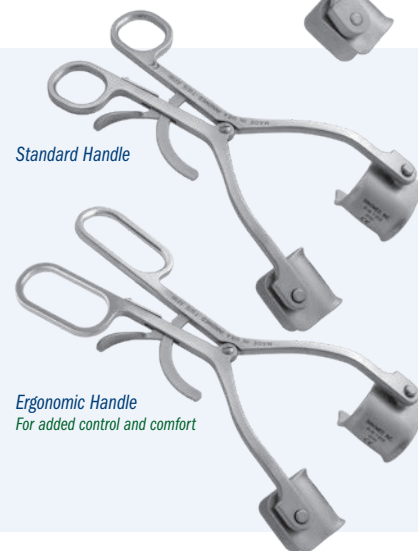
Standard Handle

Ergonomic Handle
For added control and comfort

Kolbel Self-Retaining Glenoid Retractor

Two pairs of snap-in, freely pivoting blades included.

PRODUCT NO'S:	
T1014	[Set – Standard Handle]
T1014-2F	[Set – Ergonomic Handle]
Set Includes:	
T1015	[Retractor – Standard Handle] Overall Length: 8.25" (21 cm)
– OR –	
T1015-2F	[Retractor – Ergonomic Handle] Overall Length: 9.25" (23,5 cm)
T1018-P	[Blades–Pair] 36 mm X 36 mm
T1019-P	[Blades–Pair] 36 mm X 53 mm



Standard Handle

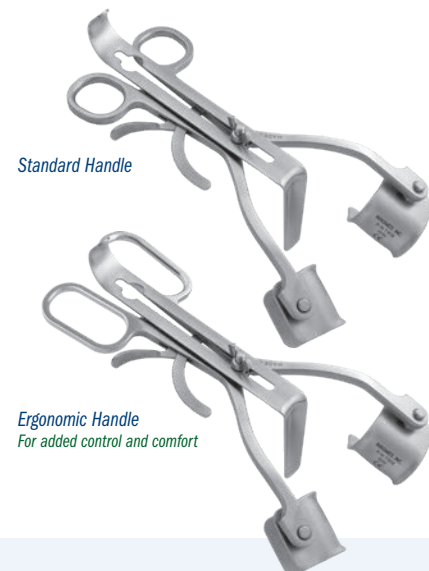
Ergonomic Handle
For added control and comfort

Kolbel Self-Retaining Glenoid Retractor with Center Blade

Center blade can be reversed for shallow or deep retraction

Two pairs of snap-in, freely pivoting blades included.

PRODUCT NO'S:	
T1050	[Set – Standard Handle]
T1050-2F	[Set – Ergonomic Handle]
Set Includes:	
T1050-01	[Retractor – Standard Handle] Overall Length: 8" (20,3 cm)
– OR –	
T1050-01-2F	[Retractor – Ergonomic Handle] Overall Length: 9" (22,9 cm)
T1050-02	[Center Blade] Length-to-bend: 6.25" (15,9 cm) Depth: 2.5" (6,4 cm)
T1018-P	[Blades–Pair] 36 mm X 36 mm
T1019-P	[Blades–Pair] 36 mm X 53 mm



Standard Handle

Ergonomic Handle
For added control and comfort

Kolbel Self-Retaining Retractor

Two pairs of snap-in, freely pivoting blades included.

PRODUCT NO'S:	
T1016	[Set]
Set Includes:	
T1017	[Retractor] Overall Length: 8.25" (21 cm) Arm Length: 6.125" (15,6 cm) Arm Length-to-hinge: 3" (7,6 cm)
T1018-P	[Blades–Pair] 36 mm X 36 mm
T1019-P	[Blades–Pair] 36 mm X 53 mm



* MADE EXCLUSIVELY FOR INNOMED IN SWITZERLAND

Two pairs of snap-in, freely pivoting blades included.

PRODUCT NO'S:	
T1016-01	[Set]
Set Includes:	
T1016-01-2F	[Retractor] Overall Length: 9.25" (23,5 cm) Length-to-hinge: 7" (17,8 cm) Arm Length: 2.25 (5,7 cm)
T1018-P	[Blades-Pair] 36 mm X 36 mm
T1019-P	[Blades-Pair] 36 mm X 53 mm

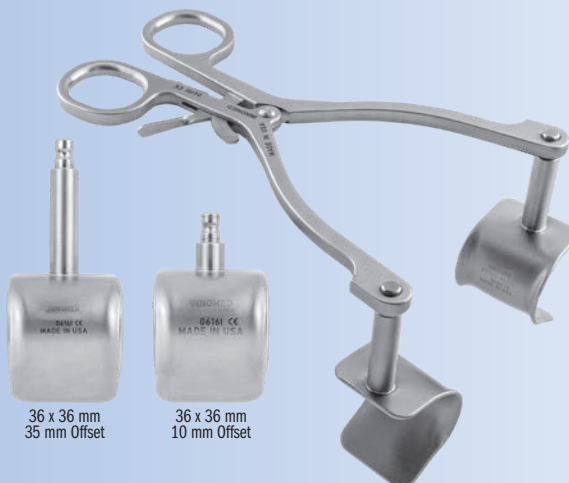


Kolbel Self-Retaining Glenoid Retractor with Hinge and Double Ergonomic Handle

Durham Offset Kolbel Shoulder Retractor Set

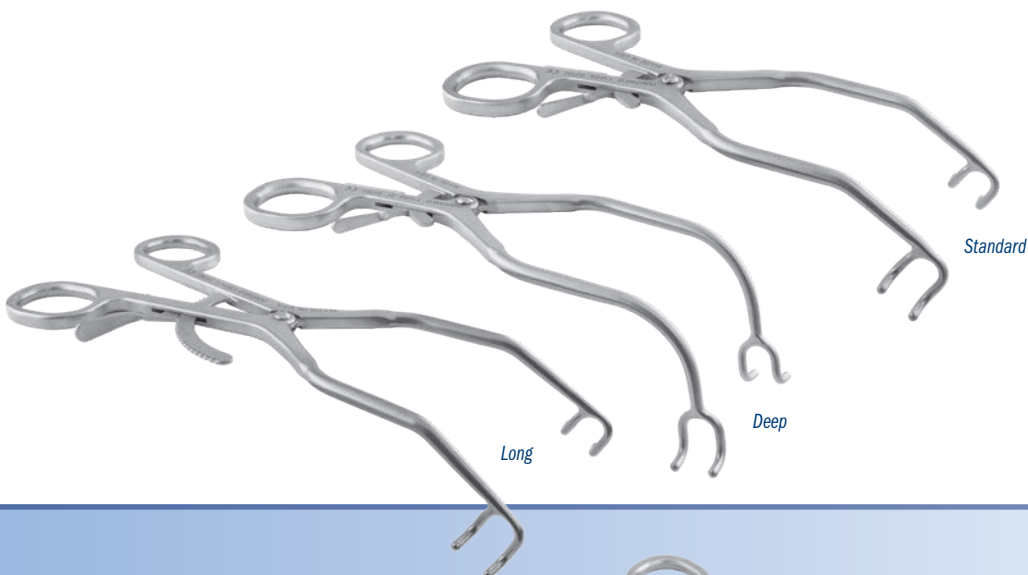
Designed for retraction of the deltoid and under the short head of the biceps muscle to expose the shoulder, the longer offset blades are useful in patients with large muscles, and the shorter offset blades are useful in smaller elderly patients

Snap-in, freely pivoting smooth curved blades help to concentrate the forces on the center of the muscle bellies, allowing the retractor to remain centered and not get in the way of exposure.



PRODUCT NO'S:	
T1030	[Set] Set includes: (1) T1030-01, (2) T1030-L, (2) T1030-S
Also available individually:	
T1030-01	[Retractor Handle] Overall Length: 7" (17,8 cm)
T1030-L	[Long Offset Blade] (2) included in set, (1) only with this product number Offset Length: 35 mm Blade Dimensions: 36 x 36 mm
T1030-S	[Short Offset Blade] (2) included in set, (1) only with this product number Offset Length: 10 mm Blade Dimensions: 36 x 36 mm

Designed by Alfred A. Durham, MD



Kolbel Soft Tissue Retractors

Helps in the early phase to retract soft tissue comprising of the gleno-humeral joint

Use facilitates the introduction of deeper retractors which are required for sufficient visibility of the glenoid, acromion and rotator cuff.

PRODUCT NO'S:	
T1006	[Standard] Overall Length: 8" (20,3 cm)
T1006-01	[Deep] Overall Length: 7.5" (19,1 cm)
T1006-L	[Long] Overall Length: 8.5" (21,6 cm)

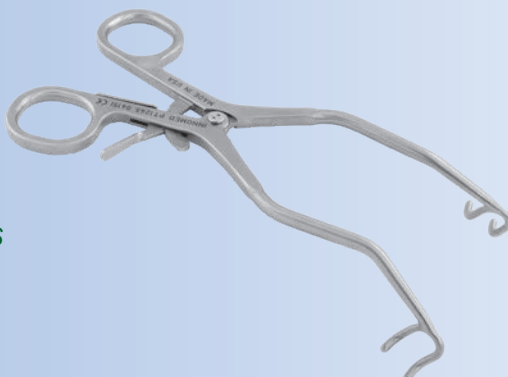


Havens Modified Kolbel Soft Tissue Retractor

Designed by Philip Havens, MD

Designed for retraction on deltoid split incisions on mini-open rotator cuff repairs

Jaws and arms are parallel with no gap when closed to allow easier insertion in tight spaces.



PRODUCT NO:	
T1006-02	 Overall Length: 7.5" (19,1 cm) Opens To: 4.5" (11,4 cm) Prong Depth: 18 mm





New!

Deep Meyerding Retractor with Ergonomic Handle

A self-retaining soft tissue retractor for use in hip, knee, and shoulder surgery

PRODUCT NO:

6244

Overall Length: 8.5" (21,6 cm)

Blade Depth: 3.5" (8,9 cm)

Blade Width: 1" (2,54 cm)

MADE EXCLUSIVELY
FOR INNOMED IN
GERMANY

Subscapularis Spreader

Reaches deep to help split the subscapularis in a Jobe approach

Also used for retracting a split deltoid in mini rotator cuff repairs.

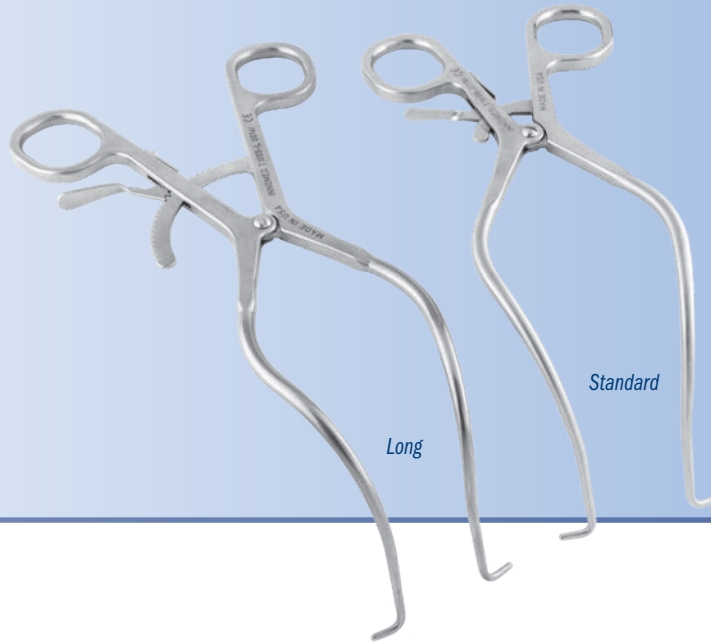
PRODUCT NO'S:

T1005 [Standard]

Overall Length: 8.375" (21,3 cm)

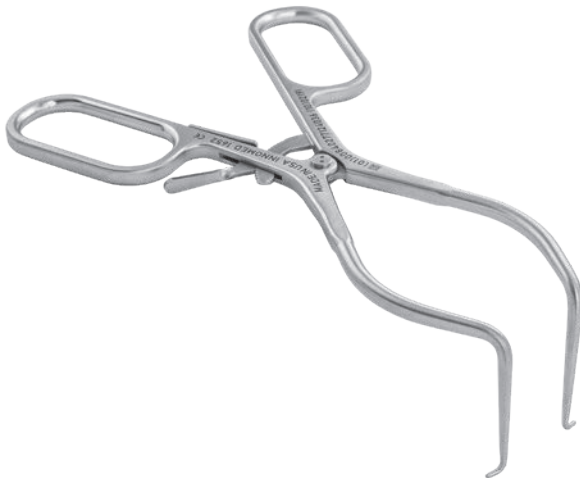
T1005-L [Long]

Overall Length: 9.25" (23,5 cm)



Long

Standard



Right Angled Subscapular Spreader - Blunt Tips

Designed by Edward McFarland, MD

Designed to hold the subscapularis muscle open when performing a subscapularis split approach to the glenoid

PRODUCT NO:

1652

Overall Length: 7.5" (19,1 cm)

Blade Depth: 2" (5,1 cm)



Humeral Protection Plates

Designed by Ronald E. Delanois, MD

Helps protect the proximal humerus from fracture after humeral head osteotomy

Plate is placed on the proximal humerus after the initial osteotomy of the humeral head for total shoulder replacement. Helps protect the proximal humerus from fracture as the humerus is retracted to gain visualization of the glenoid to prepare it for a glenoid implant.

50 mm
Spiked Bottom



50MM
INNOMED: 5259-02
L#1213MT C€

50 mm
Flat Top



46 mm
Spiked Bottom



46MM
INNOMED: 5259-01
L#1213MT C€

46 mm
Flat Top

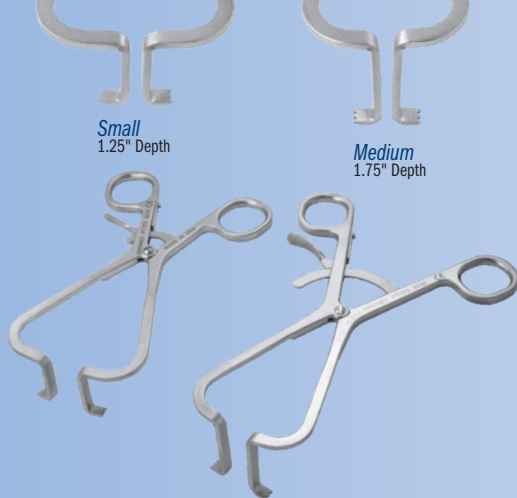


PRODUCT NO'S:

5259-01 [46mm]

5259-02 [50mm]





Small
1.25" Depth

Medium
1.75" Depth

Large
3" Depth

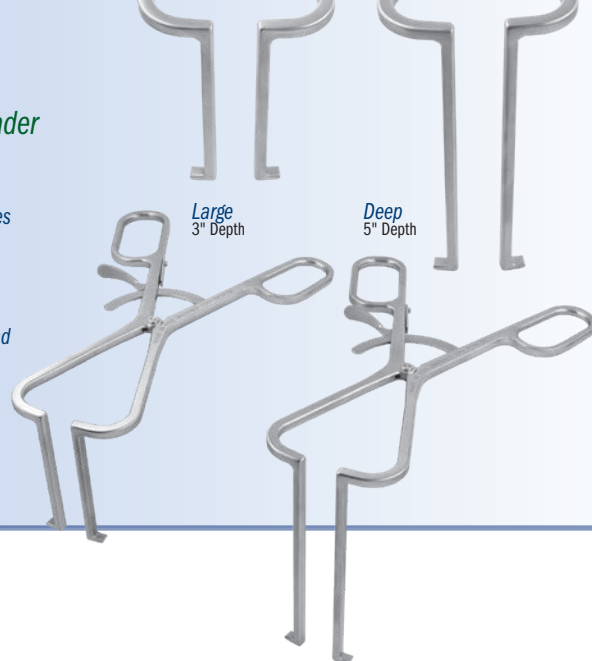
Deep
5" Depth

Flat Gelpi Retractors

Designed to help retract a broader area of soft tissue or muscle

PRODUCT NO'S:	
4191 [Small]	Overall Length: 6.5" (16,5 cm) Prong Depth: 1.25" (3,2 cm)
4192 [Medium]	Overall Length: 7.25" (18,4 cm) Prong Depth: 1.75" (4,4 cm)
4193 [Large]	Overall Length: 9" (22,9 cm) Prong Depth: 3" (7,6 cm)
4194 [Deep]	Overall Length: 10" (24,4 cm) Prong Depth: 5" (12,7 cm)

The two largest sizes feature an ergonomic handle for increased comfort and control.



Standard

With
Ergonomic
Handle

Gelpi Retractors

PRODUCT NO'S:	
4180 [Standard]	Overall Length: 7.75" (19,7 cm)
4181 [With Ergonomic Handle]	Overall Length: 8.75" (22,2 cm)

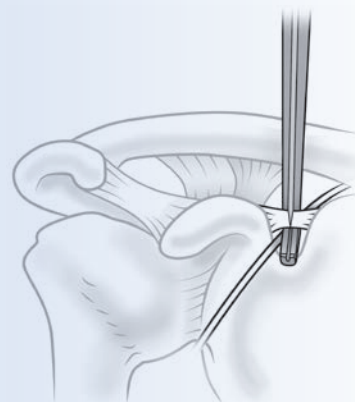


Suprascapular Ligament Cutter

Designed by Michael Craig, OPA-C

Designed to cut the transverse ligament while helping to protect the suprascapular nerve

PRODUCT NO:	
1794	Overall Length: 11.25" (28,6 cm)

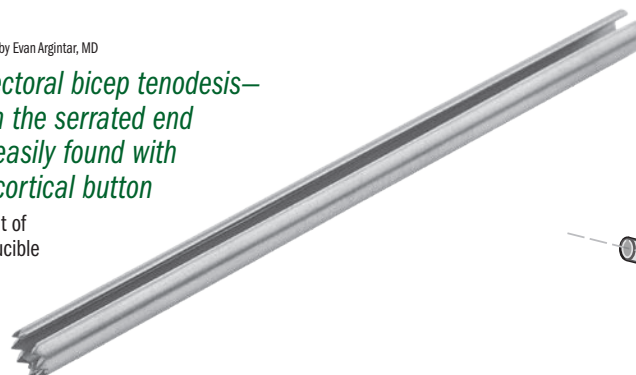


Argintar Bicep Tenodesis Sleeve

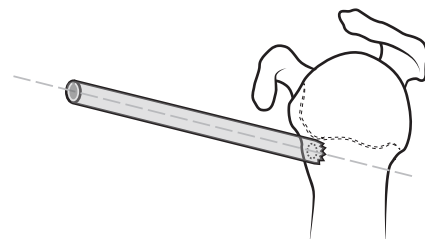
Designed by Evan Argintar, MD

Designed to help facilitate mini-open sub-pectoral bicep tenodesis—by maintaining the trajectory of the drill with the serrated end of the sleeve, the drilled humeral holes are easily found with standard percutaneous placement of the bicortical button

Once flipped, the slotted cut out in the sleeve makes detachment of the button applicator possible, helping with efficient and reproducible mini-open bicep tenodesis using button technique.



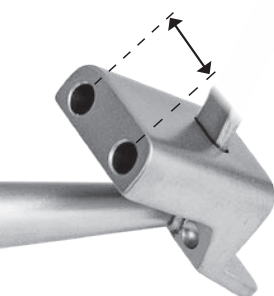
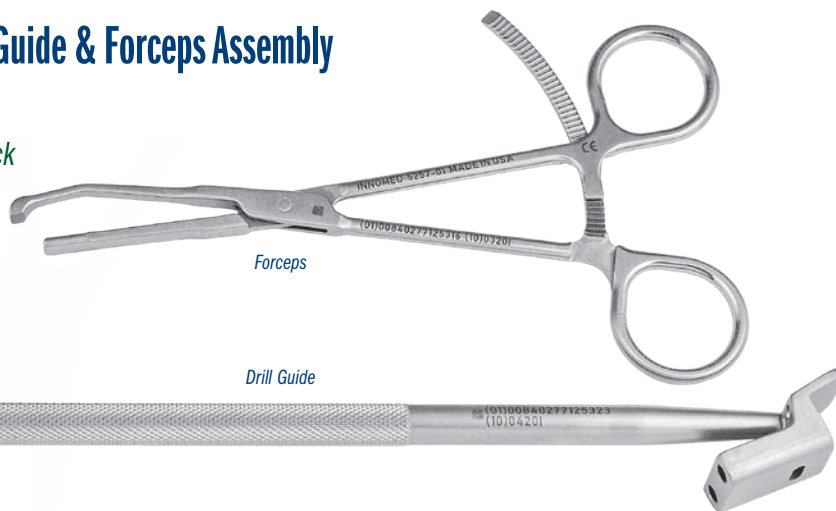
PRODUCT NO:	
5835	Overall Length: 4" (10,2 cm) External Diameter: 6,35 mm Internal Diameter: 5 mm Slot: 2,75 mm



Meyer Latarjet Drill Guide & Forceps Assembly

Designed by Professor Dominik Meyer

Aiming device for flush positioning of a bone block with a joint surface

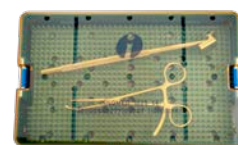


Distance between Drill Holes:
Small = .390" (9,9 mm)
Large = .492" (12,5 mm)

New!

SMALLER SIZE SET AVAILABLE

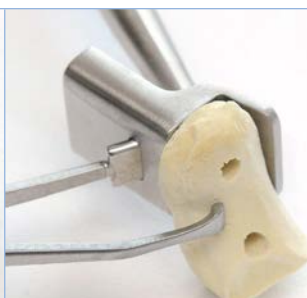
PRODUCT NO'S:	
SMALL SET	LARGE SET
5257-00 [Small Set]	5258-00 [Large Set]
Set Includes:	Set Includes:
5257-01 [Latarjet Forceps, Small] Overall Length: 5.875" (14,9 cm) Tongue and Clamp Arm Width: .22" (5,6 mm)	5258-01 [Latarjet Forceps, Large] Overall Length: 5.875" (14,9 cm) Tongue and Clamp Arm Width: .32" (8,15 mm)
5257-02 [Latarjet Drill Guide, Small] Overall Length: 8.5" (21,6 cm) Drill Hole Diameter: 3.5 mm Distance between Drill Holes: .390" (9,9 mm)	5258-02 [Latarjet Drill Guide, Large] Overall Length: 8.5" (21,6 cm) Drill Hole Diameter: 3.5 mm Distance between Drill Holes: .492" (12,5 mm)
1025 [Case]	1025 [Case]



Set in Case



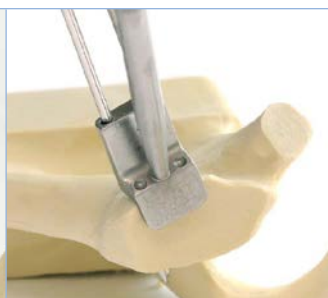
The osteotomized coracoid is fixed with the lateral, joint-facing side of the coracoid (where the ligament is) facing the flange of the drill-guide.



Two 3.5 mm guiding holes are drilled.



The drill guide is held against the antero-inferior glenoid, the flange sitting on the cartilage, and the first 2.5 mm thread hole for screw fixation is drilled.



The second 2.5 mm thread hole is drilled parallel to a 2.5 mm pin that has been inserted in the first hole to ensure correct distance and orientation.



The coracoid is now fixated using two 3.5 mm or 4.5 mm screws flush with the cartilage, due to the identical distance between flange and screw holes on coracoid and glenoid.

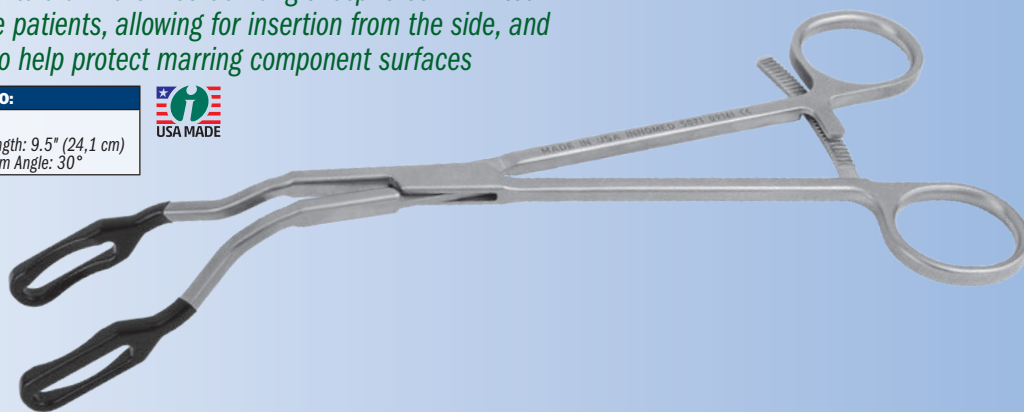


Coated Inserter for Reverse Shoulder Glenosphere Components

Designed by Michael Radon, Ilya Voloshin, MD, and Nathan Mineo

Designed to aid in the insertion of glenospheres in limited exposure patients, allowing for insertion from the side, and coated to help protect marring component surfaces

PRODUCT NO:
5071
Overall Length: 9.5" (24,1 cm)
Inserter Arm Angle: 30°





Burkhead Glenoid Inserter

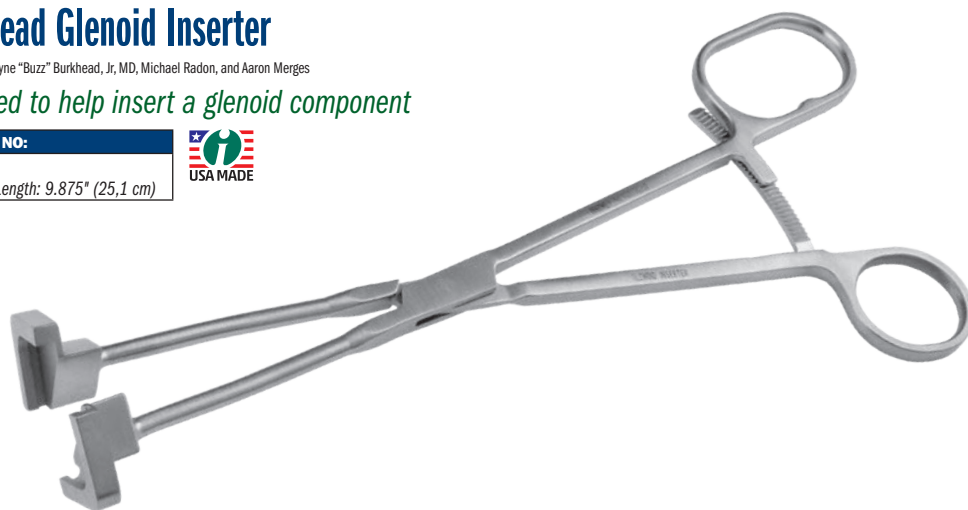
Designed by Wayne "Buzz" Burkhead, Jr, MD, Michael Radon, and Aaron Merges

Designed to help insert a glenoid component

PRODUCT NO:

4689

Overall Length: 9.875" (25,1 cm)



Glenoid Inserter

Designed by Chase Kuhn & J. Kevin Rudder, MD

Designed for final implantation of the glenoid prosthesis into the body

Grasping ends are coated to help protect from scratching the component surfaces.



PRODUCT NO:

5076

Overall Length: 8.5" (21,6 cm)

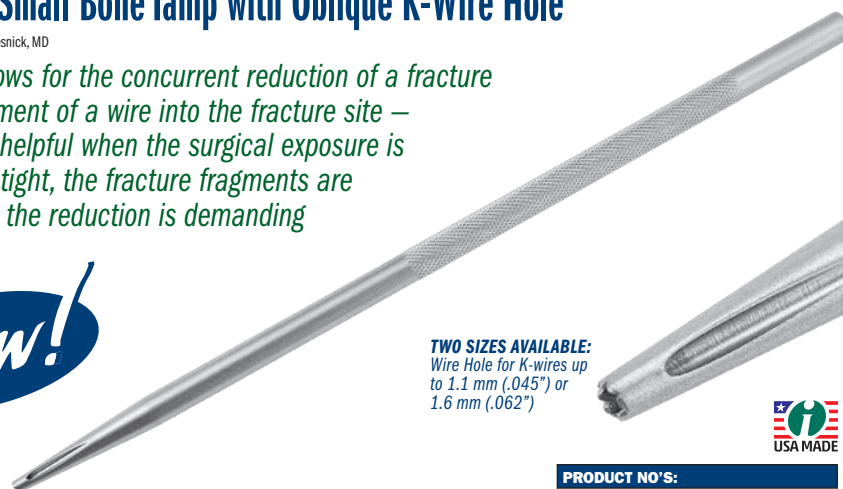


Resnick Small Bone Tamp with Oblique K-Wire Hole

Designed by Charles Resnick, MD

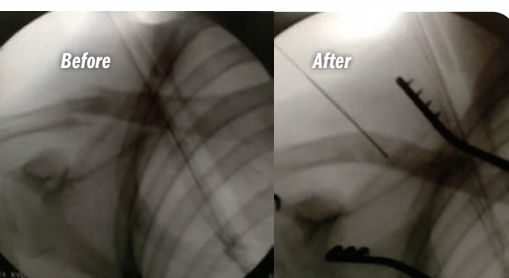
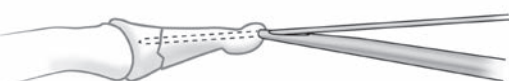
Design allows for the concurrent reduction of a fracture and placement of a wire into the fracture site — especially helpful when the surgical exposure is small and tight, the fracture fragments are small, and the reduction is demanding

New!



TWO SIZES AVAILABLE:

Wire Hole for K-wires up to 1.1 mm (.045") or 1.6 mm (.062")



- ▶ The serrated distal end minimizes slippage on the cortical surface, does not interfere with the placement of the guidewire and allows for subsequent surgeon-decided, intraoperative angulation of the wiring once the first cortex is drilled
- ▶ Especially useful in fractures where there is involvement of an articular surface, for example, mallet fractures of the distal phalanx, articular fractures that involve ligamentous attachments or tendon attachments of the phalanges, scaphoid pole small fracture fragments or other small carpal fractures, and radial styloid fractures

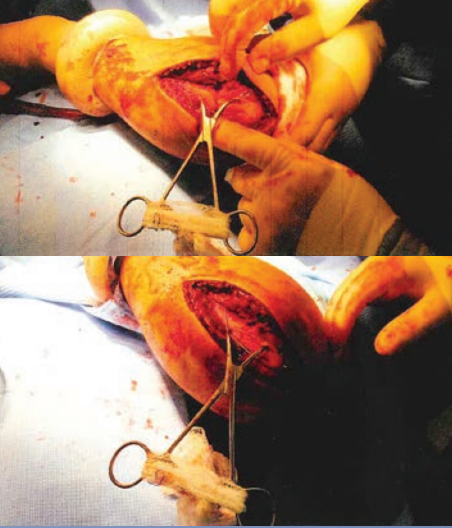
PRODUCT NO'S:

5294 [1.2 mm Hole]

Wire Hole for: 1.2 mm (.045") K-wire
Overall Length: 7.5" (19,1 cm)
Shaft Diameter: 6,3 mm
End Diameter: 2,5 mm

5294-01 [1.6 mm Hole]

Wire Hole for: 1.6 mm (.062") K-wire
Overall Length: 7.5" (19,1 cm)
Shaft Diameter: 6,3 mm
End Diameter: 2,5 mm



Calvo Olecranon Reducing Forceps

Designed by Ignacio J. Calvo, MD

Designed to reduce and hold in place transverse fractures of the olecranon to facilitate the insertion of k-wires and tension bands

Also very useful in malleolus fractures.

PRODUCT NO'S:

1801-L [Left]

1801-R [Right]

MADE EXCLUSIVELY
FOR INNOMED IN
GERMANY



Durkan Ratchet Bone Clamps

Designed by John Durkan, MD

Design of ratcheting mechanism allows for quick tightening and release around the bone

PRODUCT NO'S:

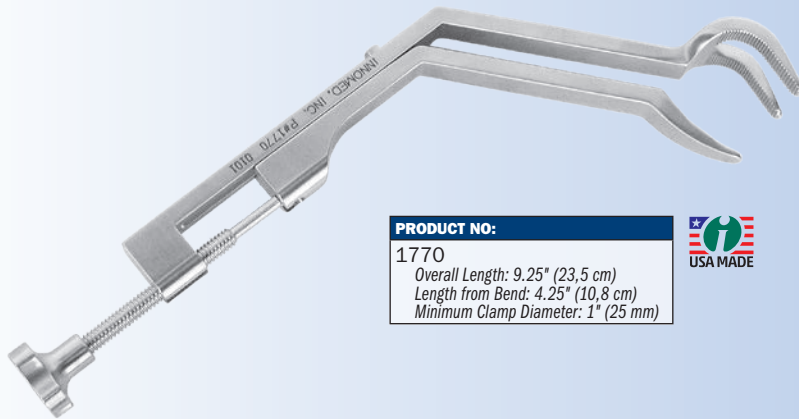
1867 [Large]

Overall Length: 8.625" (21,9 cm)
Jaw opens to: 3.5" (8,9 cm)

1868 [Small]

Overall Length: 8.5" (21,6 cm)
Jaw opens to: 3.75" (9,5 cm)

MADE EXCLUSIVELY
FOR INNOMED IN
GERMANY



PRODUCT NO:

1770

Overall Length: 9.25" (23,5 cm)
Length from Bend: 4.25" (10,8 cm)
Minimum Clamp Diameter: 1" (25 mm)



Angled Lowman-Type Bone Clamp

Designed by John J. McLeod, Jr., MD

Angled for easier insertion of the jaws around the bone

The offset distance between the jaws and handle of the clamp allow space for free and easy access to use a drill or screwdriver. The angled clamp and more-open and thinner jaws facilitate easier use in deep incisions. The angled shaft also acts as a self-retaining retractor. The tightening handle is scalloped to lessen slippage when tightening or untightening.

Bargo Bone Holding Clamp

Designed by Lonnie Bargo, CST/CFA

Designed to aid in the reduction of various fractures, and can help secure a plate in place during installation



Designed to aid in the reduction of various fractures such as: spiral, transverse, compound, oblique, or butterfly. The clamp can also be used to secure a plate in place while the screw holes are being drilled and screws inserted, it has teeth in the jaws for a better grip, and a ratchet locking handle for use on various bone diameters. The fracture site can also be manipulated with the clamp being used as a lever.

PRODUCT NO:

1895-02

Overall Length: 8.5" (21,6 cm)
Pads: 1.25" x 1" (32 mm x 25 mm)



Fracture Reduction Punch Clamp

Designed by Jong-Keon Oh, MD

Designed for use in select cases when vertical (or sagittal) plane clamping is necessary during forearm reduction, humeral fracture reduction, or diaphyseal reduction of the tibial shaft

PRODUCT NO:

5072

Overall Length: 10.5" (26,7 cm)

Point to Point Opening:

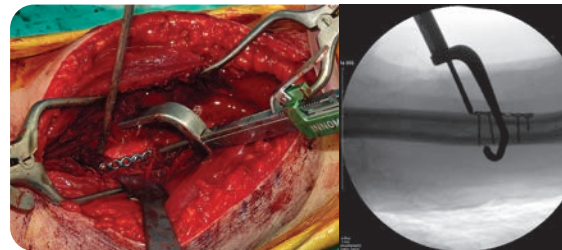
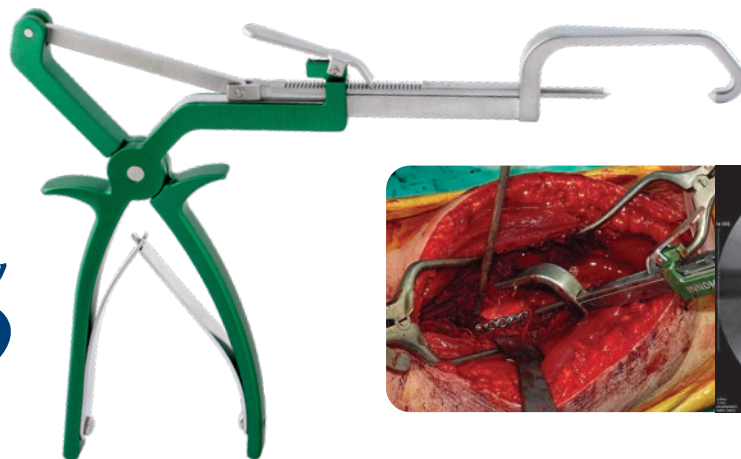
- Minimum .375" (10 mm)

- Maximum 1.375" (35 mm)

Pin Diameter: .125" (3,2 mm)



New!



Stoll Bone Plate Clamp

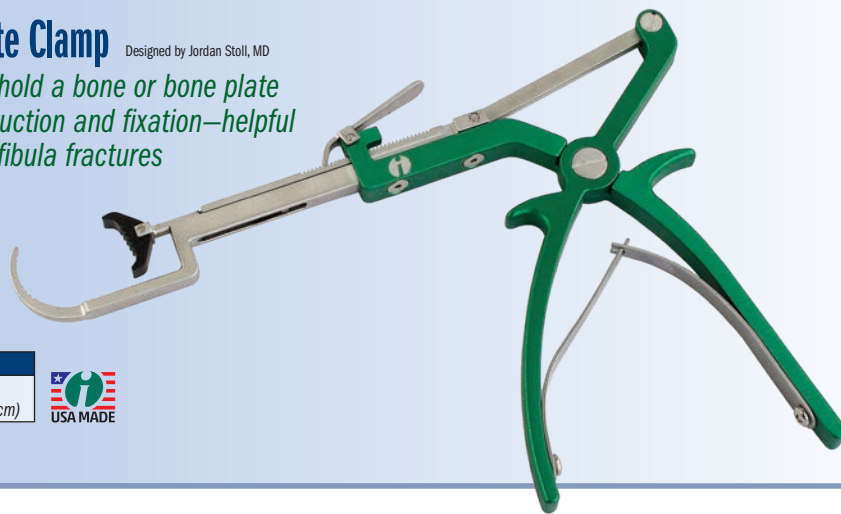
Designed by Jordan Stoll, MD

Designed to help hold a bone or bone plate in position for reduction and fixation—helpful with clavicle and fibula fractures

PRODUCT NO:

1774

Overall Length: 10" (25,4 cm)



Browner MIS Bone Clamp

Designed by Bruce D. Browner, MD

Designed to help hold a bone or bone plate for fixation, the clamp is inserted anterior to the bone, rotated to wrap around the bone, then screwed into the desired position

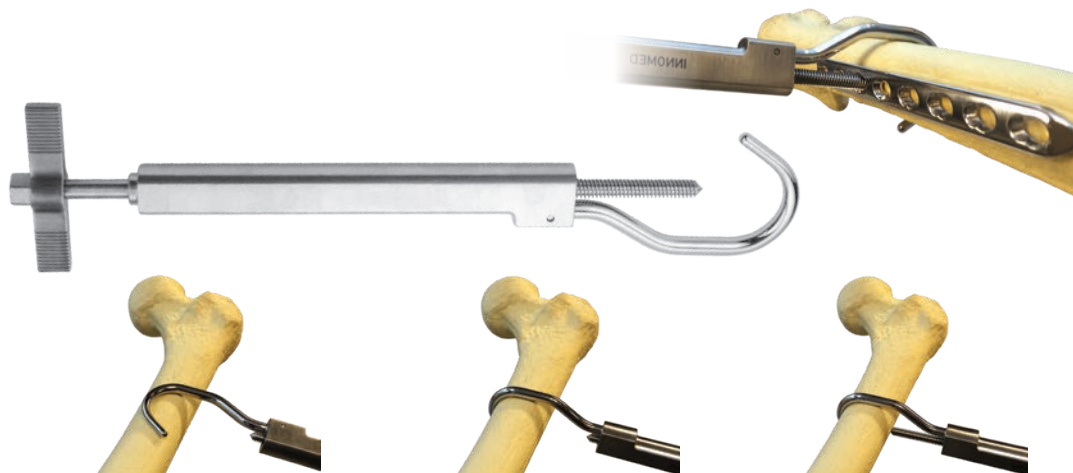
Sized to allow use on a femur, tibia or humerus.

PRODUCT NO:

1379

Overall Length: 9.25" to 11.5" (23,5 to 29,2 cm)

Maximum Bone Diameter: ~ 35 mm



- ▶ Pivoting pads accommodate metaphyseal fractures
- ▶ The quick release enables adjustment without losing reduction
- ▶ Helps provide provisional reduction of diaphyseal fractures – humeral shaft fractures, tibial fractures

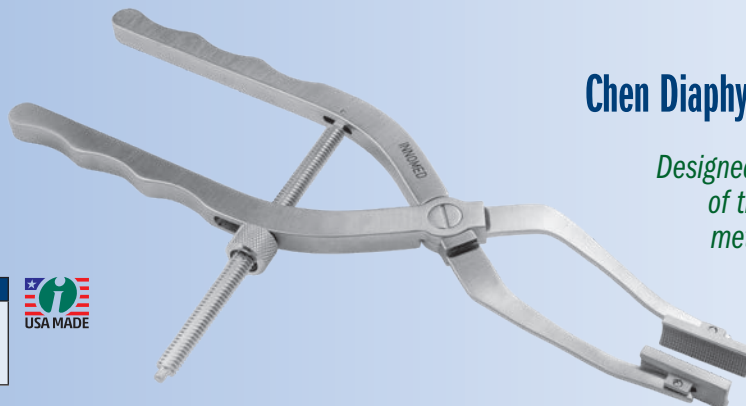
PRODUCT NO:

1808

Overall Length: 9.25" (23,5 cm)

Arm Downward Offset: 15 mm

Pad Dimensions: 1" x .375" (25,4 cm x 1 cm)



Chen Diaphyseal Fracture Reduction Clamp

Designed by Franklin Chen, MD

Designed to facilitate and maintain reduction of the internal fixation of diaphyseal and meta-diaphyseal fractures of long bones

Works especially well with short oblique bones while providing room to implement the plate with this bone clamp still in place.

Tissue Graspers with Shark Teeth

Shark teeth help to grasp on to tissue and bone

Shaft allows for use in narrow spaces.

PRODUCT NO'S:

1784-01 [Up Angled Jaw]

Shaft Length: 7" (17,8 cm)

Overall Length: 10" (25,4 cm)

Jaw: 9 mm Long x 5 mm High x 1.8 mm Wide

1784-02 [Straight Jaw]

Shaft Length: 7" (17,8 cm)

Overall Length: 10" (25,4 cm)

Jaw: 9 mm Long x 5 mm High x 1.8 mm Wide

1784-03 [Down Angled Jaw]

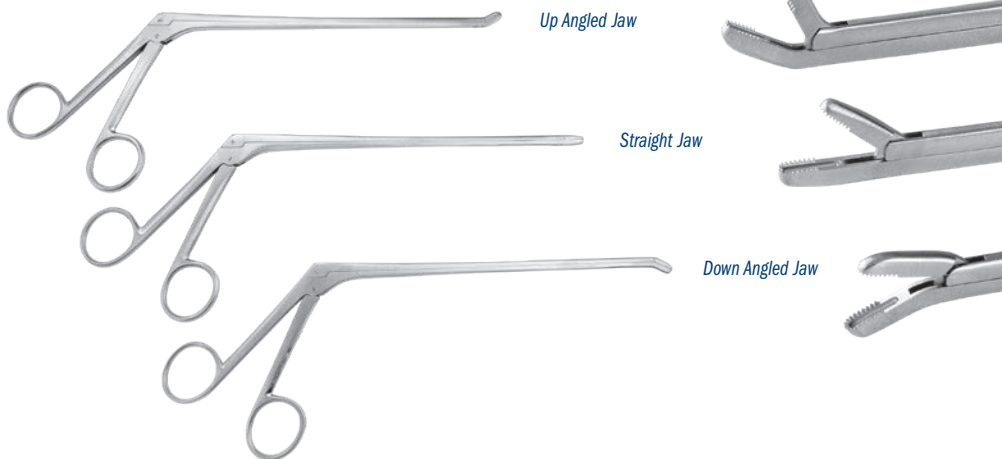
Shaft Length: 7" (17,8 cm)

Overall Length: 10" (25,4 cm)

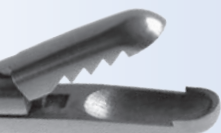
Jaw: 9 mm Long x 5 mm High x 1.8 mm Wide

Designed by Luis Ulloa

MADE EXCLUSIVELY
FOR INNOMED IN
GERMANY



Shark Tooth Jaw

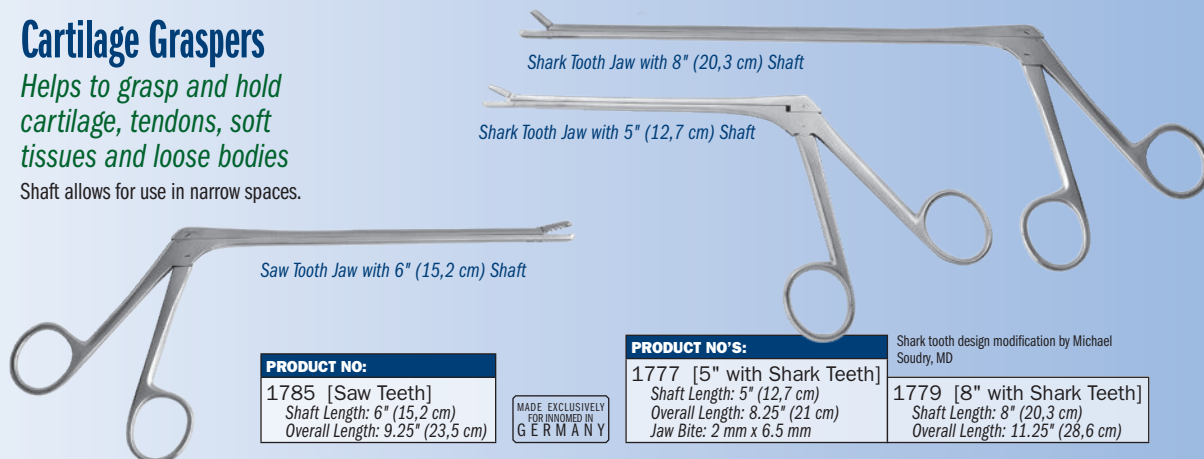


Saw Tooth Jaw

Cartilage Graspers

Helps to grasp and hold cartilage, tendons, soft tissues and loose bodies

Shaft allows for use in narrow spaces.



PRODUCT NO:

1785 [Saw Teeth]

Shaft Length: 6" (15,2 cm)

Overall Length: 9.25" (23,5 cm)

MADE EXCLUSIVELY
FOR INNOMED IN
GERMANY

PRODUCT NO'S:

1777 [5" with Shark Teeth]

Shaft Length: 5" (12,7 cm)

Overall Length: 8.25" (21 cm)

Jaw Bite: 2 mm x 6.5 mm

Shark tooth design modification by Michael Soudry, MD

1779 [8" with Shark Teeth]

Shaft Length: 8" (20,3 cm)

Overall Length: 11.25" (28,6 cm)

Soudry Loose Body Grasper

Designed by Michael Soudry, MD



Designed to help with the removal of soft tissue loose bodies in arthroscopy and open procedures

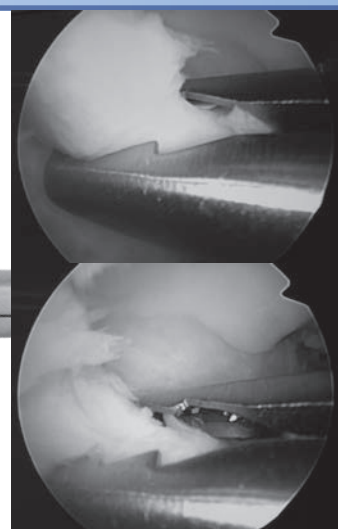
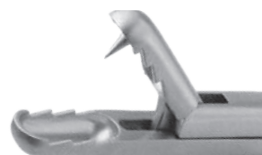
PRODUCT NO:

1769

Overall Length: 9" (22,9 cm)

Shaft Length: 6" (15,2 cm)

MADE EXCLUSIVELY
FOR INNOMED IN
GERMANY



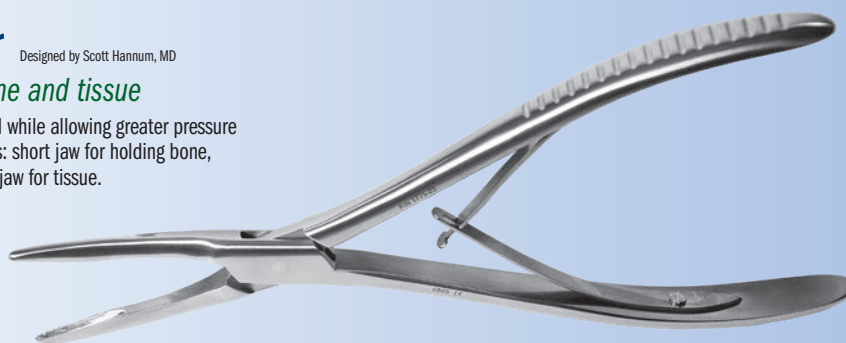
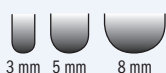
Hannum Tissue Grasper

Designed by Scott Hannum, MD

Teeth in jaw firmly holds bone and tissue

Non-locking design can be easily gripped while allowing greater pressure to be applied. Available in three jaw sizes: short jaw for holding bone, medium jaw for smaller bones, and long jaw for tissue.

Jaw widths at actual size



PRODUCT NO'S:

1775-01 [Short Jaw]

Jaw Width: 8 mm

Overall Length: 9.25" (23,5 cm)

1775-02 [Medium Jaw]

Jaw Width: 5 mm

Overall Length: 9.25" (23,5 cm)

1775-03 [Long Jaw]

Jaw Width: 3 mm

Overall Length: 9.25" (23,5 cm)

MADE EXCLUSIVELY
FOR INNOMED IN
GERMANY

Mazzara Rongeur with Small Pistol Grip Handle

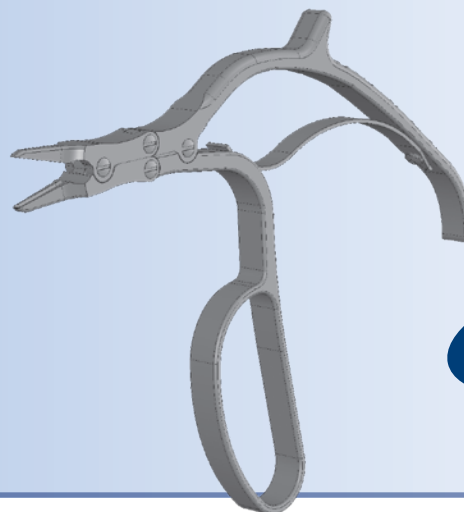
Designed by James T. Mazzara, MD

Designed for bone and soft tissue removal in small joint surgery, the small pistol grip handle lessens hand fatigue and slippage, and allows for better visualization

PRODUCT NO'S:

1765-04
Jaw Bite: 2 x 10 mm
Overall Length: 9" (22,9 cm)

1765-05
Jaw Bite: 4 x 10 mm
Overall Length: 9" (22,9 cm)



New!



Shark Tooth Graspers

Designed by Luis Ulloa

Sharp teeth help grasp onto tissue and bone

Helpful in removing the labrum, and osteophytes around the acetabulum and around the glenoid. Also helps to remove meniscus, osteophytes and loose bodies. Helps facilitate working through a small incision without disrupting vision.

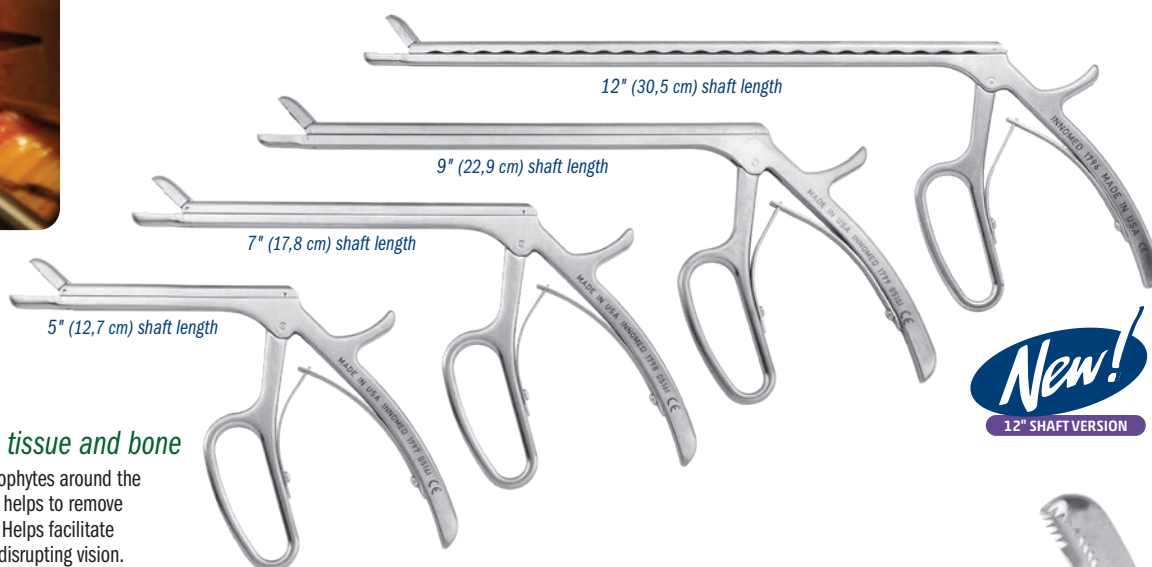
PRODUCT NO'S:

1797 [5" Shaft]
Jaw Size: 6 mm x 10 mm
Overall Length: 8" (20,3 cm)
Shaft Length: 5" (12,7 cm)

1798 [7" Shaft]
Jaw Size: 6 mm x 10 mm
Overall Length: 10" (25,4 cm)
Shaft Length: 7" (17,8 cm)

1799 [9" Shaft]
Jaw Size: 6 mm x 10 mm
Overall Length: 12" (30,5 cm)
Shaft Length: 9" (22,9 cm)

1796 [12" Shaft]
Jaw Size: 6 mm x 10 mm
Overall Length: 15" (38,1 cm)
Shaft Length: 12" (30,5 cm)



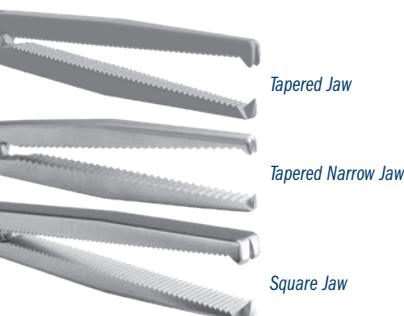
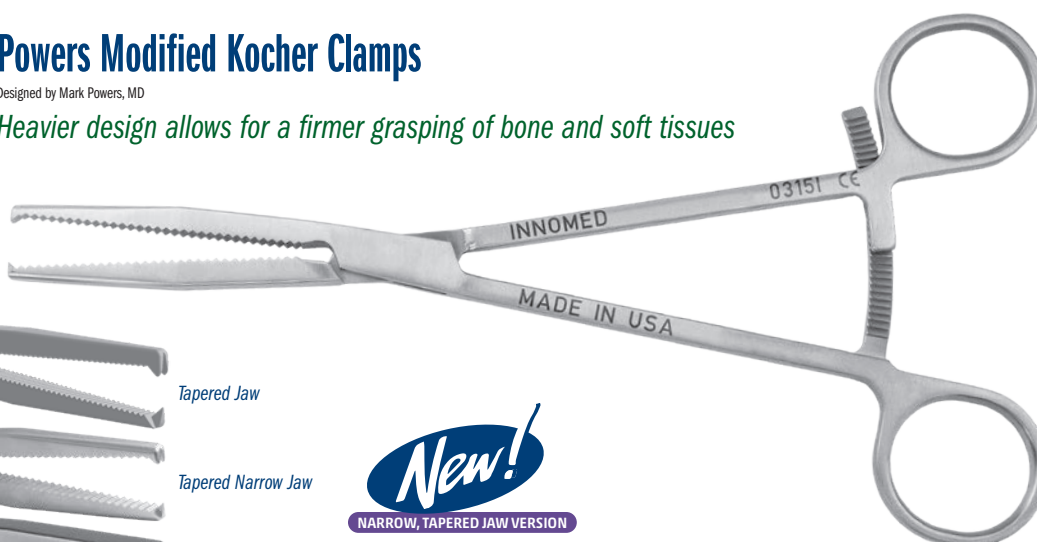
New!
12" SHAFT VERSION



Powers Modified Kocher Clamps

Designed by Mark Powers, MD

Heavier design allows for a firmer grasping of bone and soft tissues



New!

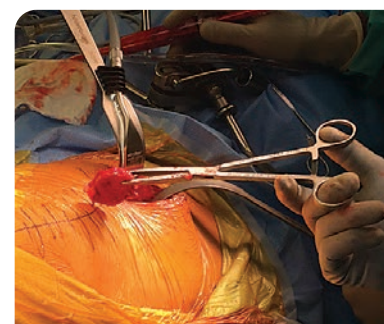
NARROW, TAPERED JAW VERSION

PRODUCT NO'S:

1813 [Tapered Jaw]
Overall Length: 8.25" (21 cm)
Jaw Length: 2.5" (6,4 cm)
Jaw at End: 5.2 mm x 4.1 mm

1813-01 [Tapered Narrow Jaw]
Overall Length: 8.25" (21 cm)
Jaw Length: 2.5" (6,4 cm)
Jaw at End: 5.2 mm x 3 mm

1814 [Square Jaw]
Overall Length: 8.25" (21 cm)
Jaw Length: 2.5" (6,4 cm)
Jaw at End: 6.5 mm x 5 mm



Small Bone Awls

Designed by Reza Firoozabadi, MD

Designed to help with manipulation of bone fragments for fixation

New!

PRODUCT NO'S:

5078 [Standard]
Overall Length: 10.5" (26.7 cm)
Handle Length: 5" (12.7 cm)

5078-01 [Long]
Overall Length: 13.375" (34 cm)
Handle Length: 6" (15.2 cm)



Lateral Condyle Fracture Set

Designed by Carl R. Weinert, MD

Designed for adult and pediatric lateral condyle fractures

Elbow Retractor

Designed for use within the elbow joint to retract the anterior capsule, and provide full exposure of the anterior articular surface for reduction and fixation of displaced lateral condyle fractures. The small blunt ti hooks over the intact medial condyle.

Symmetric Reduction Clamp

Useful to compress T-condylar fractures, and in many other fracture reduction applications. The stops on each end help prevent excessive penetration of metaphyseal and soft bone.

The stops on each clamp end help prevent excessive penetration of metaphyseal and soft bone

Asymmetric Reduction Clamps – Left and Right

Shaped to secure the lateral condyle fragment. The straight tip is placed in the coronoid fossa and the curved tip is used to grasp and compress the lateral condyle fragment. The stops on each end help prevent excessive penetration of metaphyseal and soft bone.

PRODUCT NO'S:

4697-00 [Set with Case]

Set Includes / Available Individually:

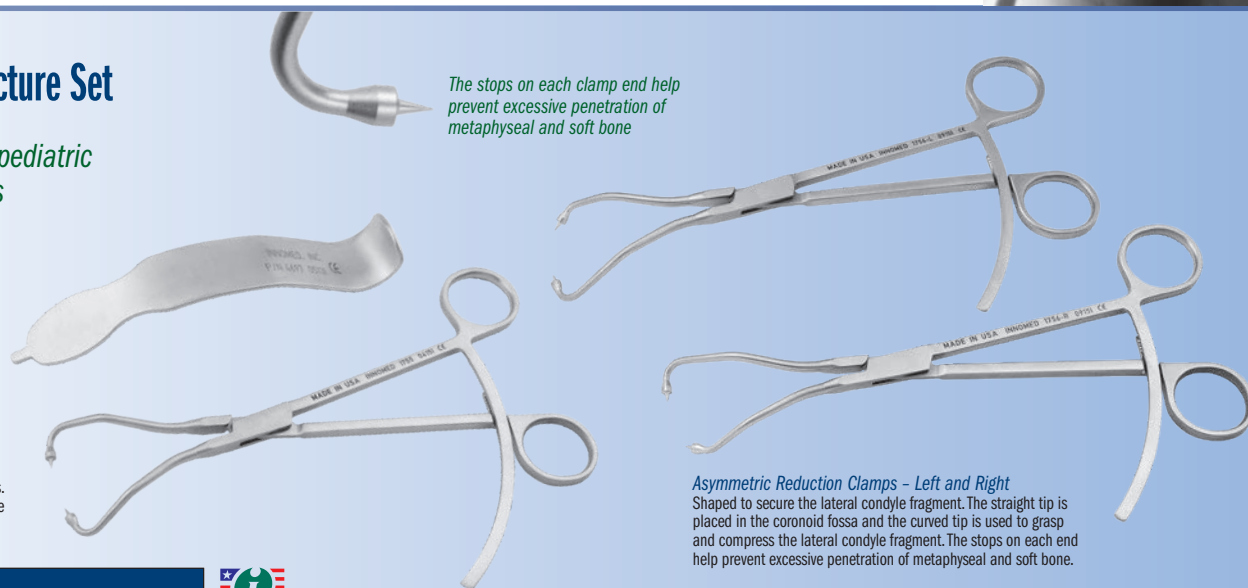
1755 [Clamp – Symmetric]
Overall Length: 8.5" (21.6 cm)
Jaw opens to: 3" (7.6 cm)

1756-L [Clamp – Asymmetric Left]
Overall Length: 8.75" (22.2 cm)

1756-R [Clamp – Asymmetric Right]
Overall Length: 8.75" (22.2 cm)

4697 [Elbow Retractor]
Overall Length: 6.5" (16.5 cm)
Blade Width: 1" (2.54 cm)

1015 [Sterilization Case]
Dimensions: 11.25" x 7.125" x 3.125" (28.6 cm x 18.1 cm x 7.9 cm)



Beard Distal Bicep Retractor

Designed by David Beard, MD

Designed to help optimize surgical exposure during anterior single incision distal biceps tendon reinsertion

The blade design features an anatomically contoured distal end to hug the radius cortex. The smooth distal end helps to avoid deep penetration, and the width matches the width of the distal biceps tendon insertion site. The narrow curved handle design helps to optimize workspace and visualization.

PRODUCT NO'S:

5834-00 [Set – Retractor & Two Blades]

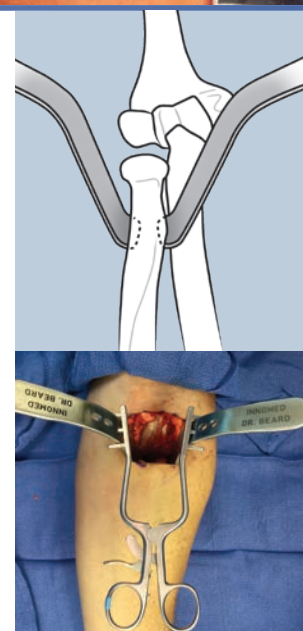
Available Individually:

5834-01 [Blade] 1 blade with this product number
Overall Length: 6.375" (16.2 cm)
Width: .625" (16 mm)

5834-02 [Self-retaining Retractor]
Overall Length: 7.5" (19.1 cm)



Sold as a set, or available individually for replacement



Auerbach Arm Holder Rake Retractor Set

Designed by David M. Auerbach, MD

New!



PRODUCT NO'S:	
2415-00	[Auerbach Arm Holder Rake Retractor Set]
Individual/Replacement Parts:	
2415-01	[Auerbach Arm Holder Assembly] Overall Length: 20" (50,4 cm) Arm Holder Dimensions: 14.5" x 4" (36,9 x 10,2 cm) Overall Width including Cleats: 7.5" (19,1 cm)
2415-02	[Auerbach Arm Holder Upright Rod] Overall Length: 19.25" (49,9 cm)
2415-04	[Auerbach Rake Chain Retractor 4-Prong] Two included in set, one with this product number Overall Length including Chain: 10" (25,4 cm) Retractor Width: .75" (1,9 cm)
2415-06	[Auerbach Rake Chain Retractor 6-Prong] Two included in set, one with this product number Overall Length including Chain: 10" (25,4 cm) Retractor Width: 1.25" (3,2 cm)
2590-S01	[Black Strap] Two included in set, one with this product number Dimensions: 1" x 24" (2,5 x 61 cm)
2595	[Table Clamp]
2770-P	[Silicone Pad] Dimensions: 12" x 5.5" (30,5 x 14 cm)
Replacement Parts:	
2590-S	[Black Straps] Pkg of 10



Allows intraoperative positioning for procedures of the posterior arm, elbow, and forearm

- ▶ Simple design for fast and easy positioning
- ▶ Connects over the drape in the sterile field using the supplied rail clamp and post
- ▶ Can be repositioned during surgery
- ▶ Sterilizable rubber pad protects the arm
- ▶ Retractors for the skin and soft tissues connect to the holder
- ▶ Compact for easy storage



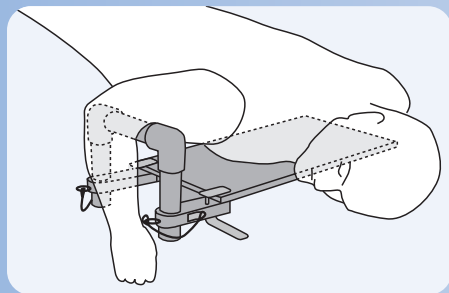
Set includes: Arm Holder Upright and Assembly, (2) 4-Prong Chain Retractors, (2) 6-Prong Chain Retractors, (2) Black Straps, Silicone Pad, and Table Clamp.

Distal Humerus Fracture Board

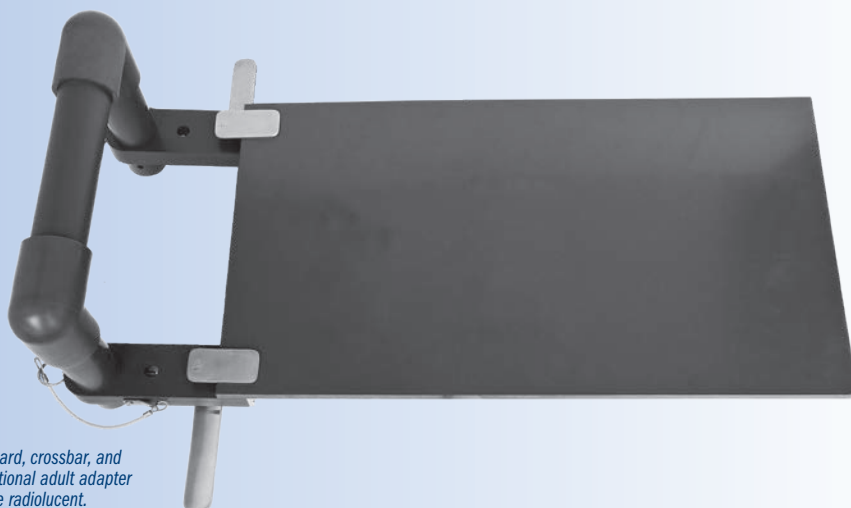
Designed by Burk Young, MD

Designed for the pinning of pediatric supra-condylar and adult distal humerus fractures

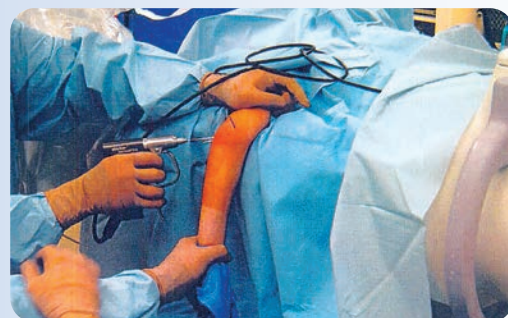
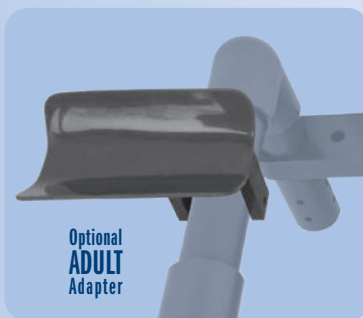
Allows the surgeon to pin these fractures without having to manually hold the fracture reduced, allowing the surgeon to focus on accurate pin placement and reduction. The height of the crossbar is fully adjustable to accommodate different size patients. Reduction is achieved by an assistant gently applying axial traction through the forearm, with the crossbar applying the counter traction. Pinning is done with the C-arm in the lateral position. An optional separate attachment to support the arm for distal humerus fractures in adults is available. Unit not sterilizable.



PRODUCT NO'S:	
2445	[Fracture Board – Pediatric] Main Board Dimensions: 22" x 12" (55,8 cm x 30,5 cm) Crossbar Height Adjusts From: 4.5" to 7.5" (11,4 cm x 19,1 cm)
2445-01	[Fracture Board – With Adult Adapter]
Optional/Replacement Part:	
2445-06	[Adult Adapter]

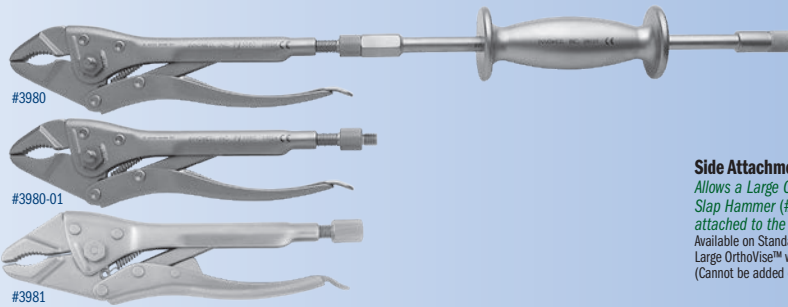


Board, crossbar, and optional adult adapter are radiolucent.



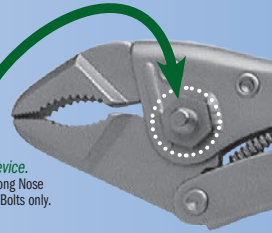
STANDARD LARGE

PRODUCT NO'S:	
	OrthoVise™ Length: 10" (25,4 cm)
3980	with Attachment Bolts (two sides & end) with Large OrthoVise™ Slap Hammer (#3950)
3980-01	with Attachment Bolts (two sides & end) without Slap Hammer
3981	without Attachment Bolts without Slap Hammer with End Attachment Nut that accepts a Standard Slap Hammer (#3925 or 3926)



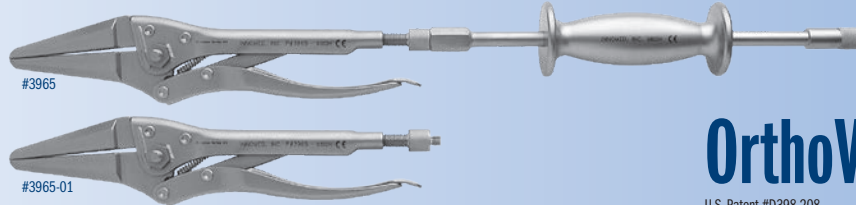
Side Attachment Bolts

Allows a Large OrthoVise™ Slap Hammer (#3950) to be attached to the side of the device. Available on Standard Large and Long Nose Large OrthoVise™ with Attachment Bolts only. (Cannot be added on later.)



LONG NOSE LARGE

PRODUCT NO'S:	
	OrthoVise™ Length: 12" (30,5 cm)
3965	with Attachment Bolts (two sides & end) with Large OrthoVise™ Slap Hammer (#3950)
3965-01	with Attachment Bolts (two sides & end) without Slap Hammer

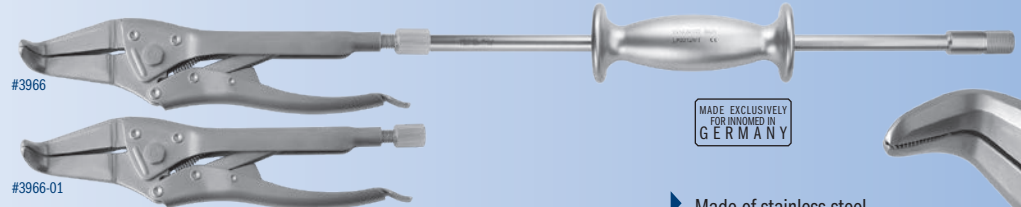


OrthoVise™

U.S. Patent #D398,208

LONG NOSE LARGE BENT JAW

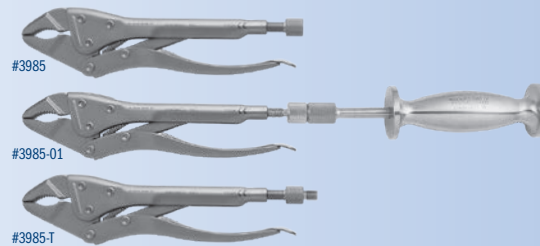
PRODUCT NO'S:	
	OrthoVise™ Length: 11.5" (29,2 cm)
3966	with Attachment Nut (end) with Standard Slap Hammer (#3925)
3966-01	without Slap Hammer with Attachment Nut (end) that accepts a Standard Slap Hammer (#3925 or 3926)



MADE EXCLUSIVELY
FOR INNOMED IN
GERMANY

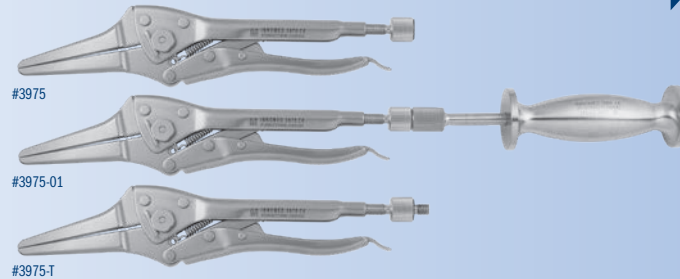
STANDARD SMALL

PRODUCT NO'S:	
	OrthoVise™ Length: 8" (20,3 cm)
3985	without Attachment Bolt without Slap Hammer
3985-01	with Attachment Bolt (end) with Small OrthoVise™ Slap Hammer (#3955)
3985-T	with Attachment Bolt (end) without Slap Hammer



LONG NOSE SMALL

PRODUCT NO'S:	
	OrthoVise™ Length: 9.5" (24,1 cm)
3975	without Attachment Bolt without Slap Hammer
3975-01	with Attachment Bolt (end) with Small OrthoVise™ Slap Hammer (#3955)
3975-T	with Attachment Bolt (end) without Slap Hammer



SLAP HAMMERS

PRODUCT NO'S:	
3950	[Slap Hammer for Large OrthoVise] For use with 3965's, 3980's, 3981 Overall Length: 16.5" (41,9 cm)
3955	[Slap Hammer for Small OrthoVise] For use with: 3975's, 3985's Overall Length: 8.75" (22,2 cm)
3925	[Standard Slap Hammer w/16" Rod] For use with: 3966's Overall Length: 16" (40,7 cm)
3926	[Easy Grip Slap Hammer w/16" Rod] For use with: 3966's Overall Length: 16" (40,7 cm)

For Large
OrthoVise



For Small
OrthoVise



Standard
with 16" Rod



Easy Grip Standard
with 16" Rod



THREADED ADAPTERS

PRODUCT NO'S:	
3980-02	[Small Adapter] Changes Male End of a Slap Hammer to Female
3980-03	[Threaded Adapting Screw – Large] For use with 3965's, 3966's, 3980's, 3981
3985-03	[Threaded Adapting Screw – Small] For use with: 3975's, 3985's

Small Adapter

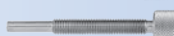


Small Adapter allows a Standard Slap Hammer (#3925 or #3926) to be used with any Large OrthoVise™ with Attachment Bolts

Threaded Large



Threaded Small



Threaded Adapting Screws can be used to append the corresponding size OrthoVise™ with an Attachment Bolt for use with a Slap Hammer

Long Jaw Needle Nose Pliers

PRODUCT NO'S:

1833

Overall Length: 7" (17,8 cm)

Jaw Length: 2.25" (5,7 cm)

Jaw Width Tapered from: 8 mm to 1.5 mm

Jaw Height Tapered from: 12 mm to 2.5 mm



MADE EXCLUSIVELY
FOR INNOMED IN
GERMANY



Modified Lambotte Osteotomes

Designed with a striking platform, plus a cross-bar hole to help control rotational stability and assist with removal

Six (6) sizes available, from 1/4" to 1-1/2" in 1/4" increments. Cross-bar and case included in complete set. Two smallest sizes have an 1/8" hole in which an 1/8" pin can be used as a cross bar (not included).

PRODUCT NO'S:

5350-00 [Set w/Case]

Also Available Individually:

5350-25 [1/4" (6 mm)]
Overall Length: 9" (22,9 cm)
Osteotome Width: .25" (6.35 mm)

5350-50 [1/2" (13 mm)]
Overall Length: 9" (22,9 cm)
Osteotome Width: .5" (12.7 mm)

5350-75 [3/4" (19 mm)]
Overall Length: 9" (22,9 cm)
Osteotome Width: .75" (19 mm)

5350-CB [Cross Bar]



5350-100 [1" (25 mm)]
Overall Length: 9" (22,9 cm)
Osteotome Width: 1" (25.4 mm)

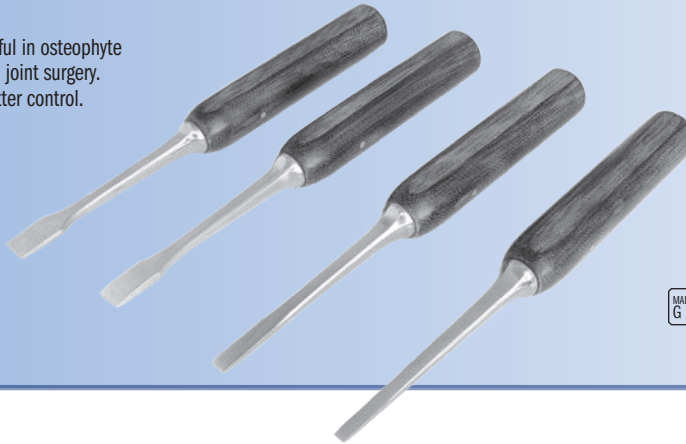
5350-125 [1-1/4" (32 mm)]
Overall Length: 9" (22,9 cm)
Osteotome Width: 1.25" (31.75 mm)

5350-150 [1-1/2" (38 mm)]
Overall Length: 9" (22,9 cm)
Osteotome Width: 1.5" (38.1 mm)

5350-CASE [Case]



Small, thin osteotomes helpful in osteophyte and cement removal in total joint surgery. Larger handle helps with better control.



MADE FOR INNOMED IN
GERMANY

Mini-Ilexer Osteotomes

Helpful in osteophyte and cement removal

PRODUCT NO'S:

5270-01
Blade Width: 4 mm
Overall Length: 7.25" (18,4 cm)
Handle Length: 4" (10,2 cm)

5270-02
Blade Width: 6 mm
Overall Length: 7.25" (18,4 cm)
Handle Length: 4" (10,2 cm)

5270-03
Blade Width: 10 mm
Overall Length: 7.25" (18,4 cm)
Handle Length: 4" (10,2 cm)

5270-04
Blade Width: 12 mm
Overall Length: 7.25" (18,4 cm)
Handle Length: 4" (10,2 cm)

Whelan Flexible Chisel Guide

Designed by E.J. Whelan, III, MD

Designed to help stabilize a thin chisel blade until it's within the bone prosthesis interface

Guide with sliding handle helps to stabilize a thin flexible chisel blade until it's within the bone prosthesis interface. Chisel tip lets it hug the prosthesis to help prevent perforation. Slap hammer threads into the handle and is designed to facilitate blade removal. Easily changeable disposable blades help assure sharpness.



PRODUCT NO'S:

5301-00 [Complete Set]

Included In Set / Replacement Parts:

5301-01 [Guide Only]
Overall Length: 5.5" to 8.5" (14 cm to 21,6 cm) w/o blade

5301-02 [10 mm Chisel Blade Only]
Overall Length: 4.625" (11,7 cm)
Blade Thickness: .020" (0,51 mm)

3040 [Slap Hammer]

1015 [Sterilization Case]

Chisel blade features an ultra hard titanium nitride coating to help extend life by increasing surface hardness, prolonging sharpness, and resisting chemicals and corrosion.



Complete Set



Two blades included in Set

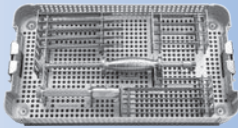
Flexible Osteotome System

Provides an assortment of osteotome blades for various orthopedic surgery procedures

PRODUCT NO'S:

S0011-00	[Set with Quick-Coupling Handle and Case]
S0012-00	[Set with Locking Nut Handle and Case]
Individual Instruments Included in Sets:	
S1002	[Thin Osteotome Blade] 2.5" (6,3 cm) x 8 mm
S1003	[Thin Osteotome Blade] 2.5" (6,3 cm) x 10 mm
S1004	[Thin Osteotome Blade] 2.5" (6,3 cm) x 12 mm
S1005	[Thin Osteotome Blade] 2.5" (6,3 cm) x 20 mm
S1006	[Curved Thin Osteotome Blade] 2.5" (6,3 cm) x 12 mm
S1007	[Curved Thin Osteotome Blade] 5" (12,7 cm) x 20 mm
S1008	[Thin Osteotome Blade] 5" (12,7 cm) x 10 mm
S1009	[Thin Osteotome Blade] 5" (12,7 cm) x 8 mm
S1020	[Handle with Quick-Coupling End] 5" (12,7 cm)
or	
S1021	[Handle with Locking Nut] 5" (12,7 cm)
S1133	[Radial Osteotome] 5" (12,7 cm) x 10 mm
S1120	[Radial Osteotome] 5" (12,7 cm) x 12 mm
S1134	[Radial Osteotome] 5" (12,7 cm) x 14 mm
S1121	[Radial Osteotome] 5" (12,7 cm) x 16 mm
S1122	[Radial Osteotome] 5" (12,7 cm) x 20 mm
S2007	[Slap Hammer] 12" (30,5 cm)
9018	[Case]

- Sharp, flexible blades are well suited for loosening implants from cement or bony ingrowth fixation
- Various blade widths and profiles allow great flexibility to follow the implant contours
- Modular handle is made of high impact surgical stainless steel and has a quick-coupling positive locking mechanism for ease of use and quick blade changes
- Slap hammer threads into the handle and is designed to facilitate blade removal



- Optional Strike Plate can be attached to the Handle for direct striking with a mallet
- Optional Curved Chisel Blades are designed to help loosen the cement/prosthesis interval in TKA tibial tray and femoral component revisions. The curved design is useful in working around pegs & fins to get posterior cement access. Also helpful with removal of other implants, i.e shoulder, ankle, etc.

Optional Parts and Blades

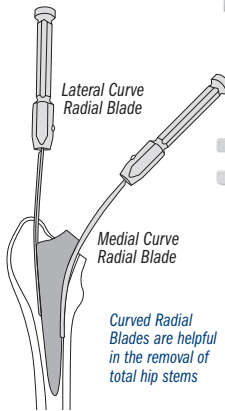
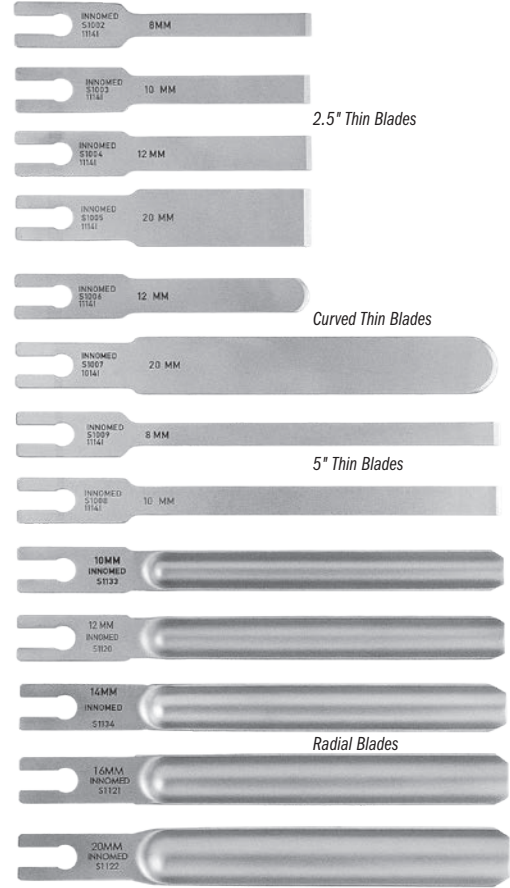
PRODUCT NO'S:

S1020-SP	[Strike Plate for Handle] Diameter 1.625" (4,1 cm)
Optional Blades (Not Included In Complete Set)	
S1123	[Extra Long Osteotome Blade] 7.5" (19,1 cm) x 8 mm
S1135	[Radial Osteo. Medial Curve] 6.75" (17,1 cm) x 11 mm
S1136	[Radial Osteo. Lateral Curve] 6.75" (17,1 cm) x 11 mm
S1137	[Radial Osteo. Medial Curve] 5" (12,7 cm) x 11 mm
S1138	[Radial Osteo. Lateral Curve] 5" (12,7 cm) x 11 mm
S1222	[Chisel Blade] 2.5" (6,4 cm) x 8 mm
S1223	[Chisel Blade] 2.5" (6,4 cm) x 10 mm
S1224	[Chisel Blade] 2.5" (6,4 cm) x 12 mm
S1225	[Chisel Blade] 2.5" (6,4 cm) x 20 mm
S1228	[Chisel Blade] 5" (12,7 cm) x 10 mm
S1229	[Chisel Blade] 5" (12,7 cm) x 8 mm
S1230	[Chisel Blade] 5" (12,7 cm) x 20 mm
S1231	[Chisel Blade] 5" (12,7 cm) x 12 mm
S1232	[Extra Long Chisel Blade] 7.5" (19,1 cm) x 8 mm
S1233-L	[Flexible Left Curved Chisel] 2" (5,1 cm) x 8 mm
S1233-R	[Flexible Right Curved Chisel] 2" (5,1 cm) x 8 mm

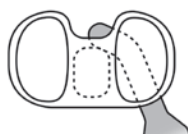
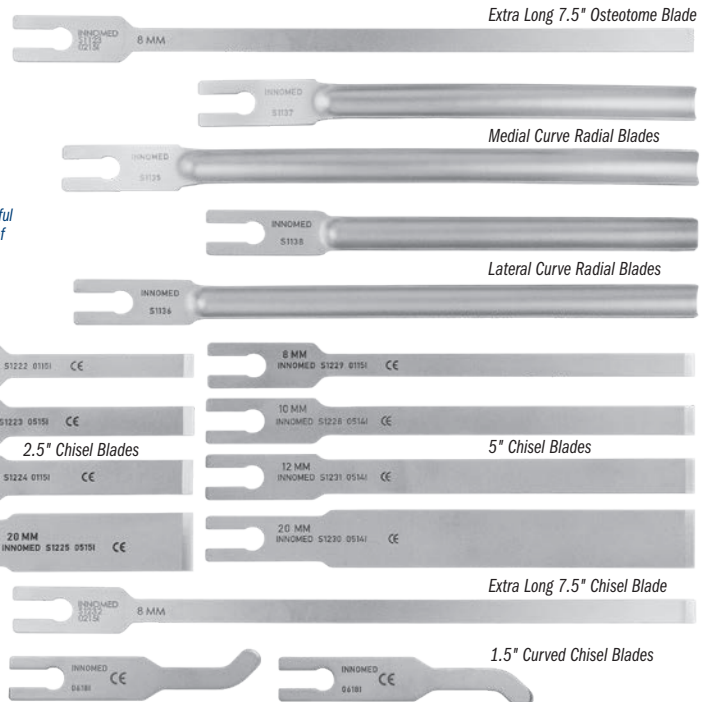
Medial and Lateral Curve Radial Blades designed by Henry Boucher, MD
Curved Chisel Blades designed by William McMaster, MD



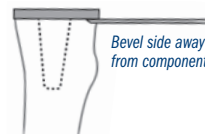
Slap Hammer



Curved Radial Blades are helpful in the removal of total hip stems



Curved chisel design allows working around component pegs, fins, etc.



Bevel side away from component



Strike Plate for Handle



Narrow Cement Removal Gouge, Short

Narrow Cement Removal Gouge, Long

Narrow Offset Cement Removal Gouge

Acetabular Chisel

Offset Chisel

Flared Angle Chisel

Wide Gouge

"V" Splitter

Saddle Punch

Cement Splitting Osteotome

Cement Removal Osteotome, Short

Cement Removal Osteotome, Long

4.4 mm Drill & Drill Guide

6.4 mm Drill & Drill Guide

Straight Cement Removal Hook

Curved Cement Removal Hook

Cross Bar

7 mm T-Handle Conical Tap

9 mm T-Handle Conical Tap

Slotted Mallet

Mueller-Type Cement Removal Instruments

Used for cement removal in the hip, knee, and shoulder

PRODUCT NO'S:

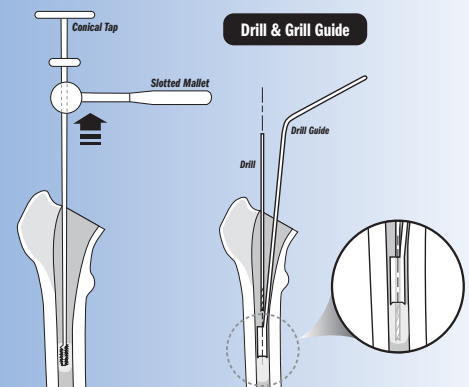
S7500-00 [Complete Set with Case]

Individual Instruments:

S7505	[Narrow Cement Removal Gouge, Short] Shaft Length: 15 cm Gouge: 9 mm, negative	1
S7507	[Narrow Cement Removal Gouge, Long] Shaft Length: 24 cm Gouge: 9 mm, negative	2
S7510	[Narrow Offset Cement Removal Gouge] Shaft Length: 24 cm Gouge: 9 mm, negative	3
S7515	[Acetabular Chisel] Shaft Length: 24 cm Chisel: 7.5 mm	4
S7520	[Offset Chisel] Shaft Length: 15 cm Chisel: 9 mm	5
S7525	[Flared Angle Gouge] Shaft Length: 24 cm Gouge: 9 mm, positive, angle 15° down	6
S7530	[Wide Gouge] Shaft Length: 24 cm Gouge: 11.5 mm, negative	7
S7535	["V" Splitter] V-Shaped Chisel: 7 mm	8
S7587	[Saddle Punch] Shaft Length: 24 cm Punch: 16.5 mm x 6.5 mm	9
S7590	[Cement Splitting Osteotome] Shaft Length: 24 cm	10
S7595	[Cement Removal Osteotome, Short] Shaft Length: 15 cm Osteotome: 8 mm	11
S7597	[Cement Removal Osteotome, Long] Shaft Length: 24 cm Osteotome: 8 mm	12
S7540	[4.4 mm Drill]	13
S7545	[4.4 mm Drill Guide]	14
S7550	[6.4 mm Drill]	15
S7555	[6.4 mm Drill Guide]	16
S7560	[Straight Cement Removal Hook] Hook Curette: 10 mm	17
S7565	[Curved Cement Removal Hook] Hook Curette: 10 mm	18
S7570	[Cross Bar]	19
S7575	[7 mm T-Handle Conical Tap]	20
S7580	[9 mm T-Handle Conical Tap]	21
S7585	[Slotted Mallet]	22
9075	[Case Only]	



Conical Tap & Mallet

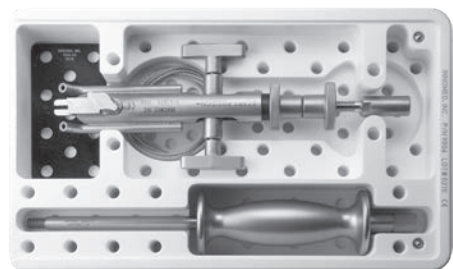


Nicholson Universal Humeral Prosthesis Extractor

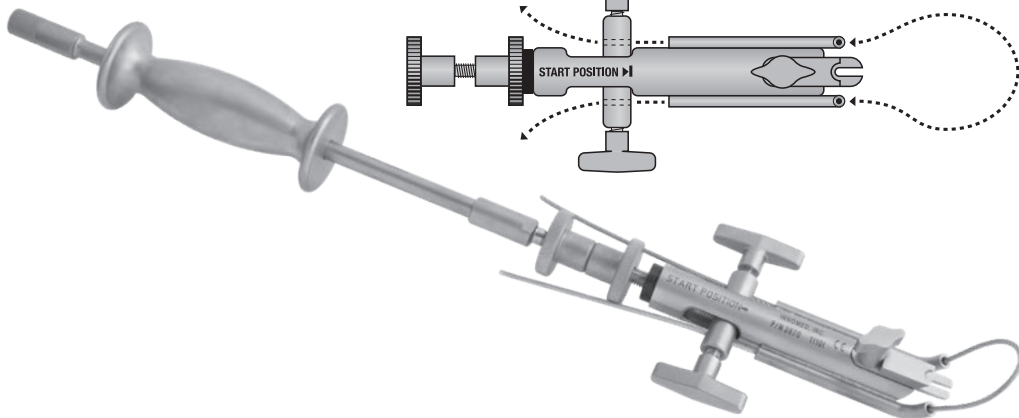
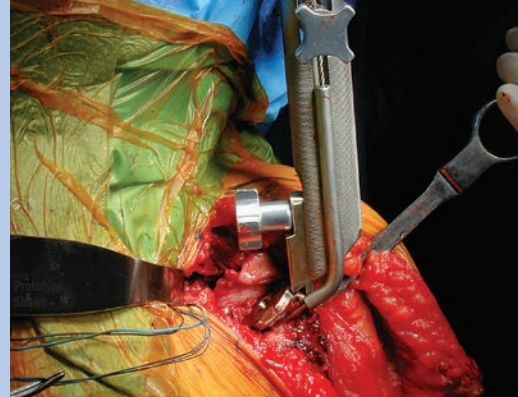
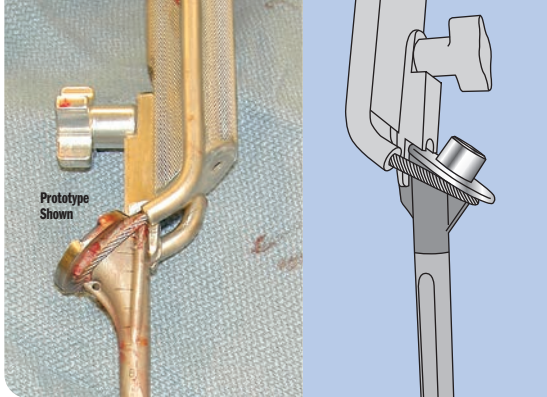
Designed by Gregory Nicholson, MD

Designed to fit most humeral prostheses

PRODUCT NO'S:	
3670	[Extractor Set with Case]
Individual/Replacement Parts:	
3670-01	[Extractor Only]
3670-10	[Foot Adapter]
3670-CABLE	[2.5 mm Cable] Package of 2
9006	[Case Only]
3925-A12	[12" (30,5 cm) Slaphammer Rod Only]
3925-H	[Slaphammer Only (No Rod)]



Set includes a slaphammer, two non-sterile 2.5 mm cables, and a sterilization case.



Nicholson Shoulder and Small Bone Cement Removal Instruments

Designed by Gregory Nicholson, MD

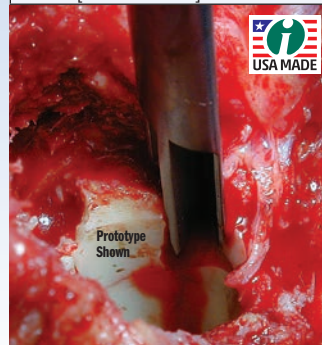
Designed to facilitate cement removal in smaller diameter bone of the humerus, ulna, and smaller implant geometries



- ▶ Reverse bevel tip helps the gouge to slide between the bone and cement
- ▶ T-shaped Gouge-Splitter allows the gouge to slide between the cement and bone and vertically split the cement mantle to facilitate removal
- ▶ Small diameter widths and curvatures more closely match shoulder and elbow implants and smaller bone diameters
- ▶ Shorter length allows for better control and access
- ▶ The footed impactor is used to help remove a humeral implant by impacting the medial collar of the prosthesis – helps provide a very direct parallel force to the implant for removal



PRODUCT NO'S:	
Gouges Overall Length: 9" (22,9 cm)	
Gouges Handle Length: 4" (10,2 cm)	
5251-00	[Complete Set w/Case]
5251-05	[Extra Small]
Gouge Width: 5 mm	
5251-07	[Small]
Gouge Width: 7 mm	
5251-09	[Medium]
Gouge Width: 9 mm	
5251-11	[Large]
Gouge Width: 11 mm	
5252-07	[Small w/Splitter]
Gouge Width: 7 mm	
Splitter Height: 4 mm	
5252-09	[Medium w/Splitter]
Gouge Width: 9 mm	
Splitter Height: 5 mm	
5252-11	[Large w/Splitter]
Gouge Width: 11 mm	
Splitter Height: 6 mm	
5254	[Backhook]
Overall Length: 12.5" (31,8 cm)	
Handle Length: 4.5" (11,4 cm)	
Shaft Diameter: 4 mm	
5255	[Footed Impactor]
Foot Pad Size: 8.5 mm x 11.5 mm	
Shaft Diameter: 8.5 mm (21,6 cm)	
Overall Length: 12.75" (32,4 cm)	
Handle Length: 4.5" (11,4 cm)	
5253	[Case for Set]



Levy Humeral Stem Extraction Punch

Designed by Jonathan Levy, MD

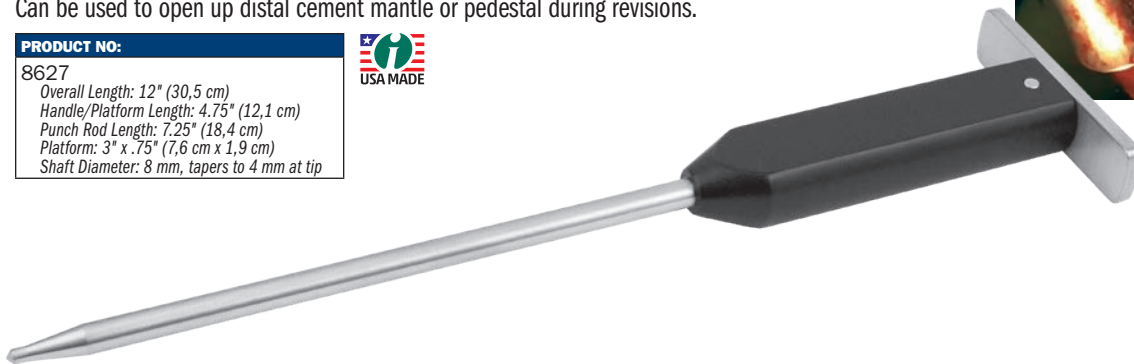
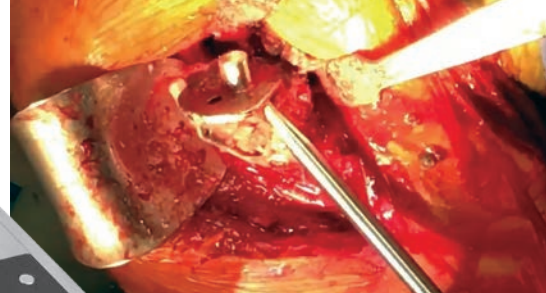
Ultra hard cobalt chrome shaft and impactor tip designed to help remove a humeral stem during revision total shoulder arthroplasty

Can be used to open up distal cement mantle or pedestal during revisions.

PRODUCT NO:

8627

Overall Length: 12" (30,5 cm)
Handle/Platform Length: 4.75" (12,1 cm)
Punch Rod Length: 7.25" (18,4 cm)
Platform: 3" x .75" (7,6 cm x 1,9 cm)
Shaft Diameter: 8 mm, tapers to 4 mm at tip



Nicholson Footed Impactor

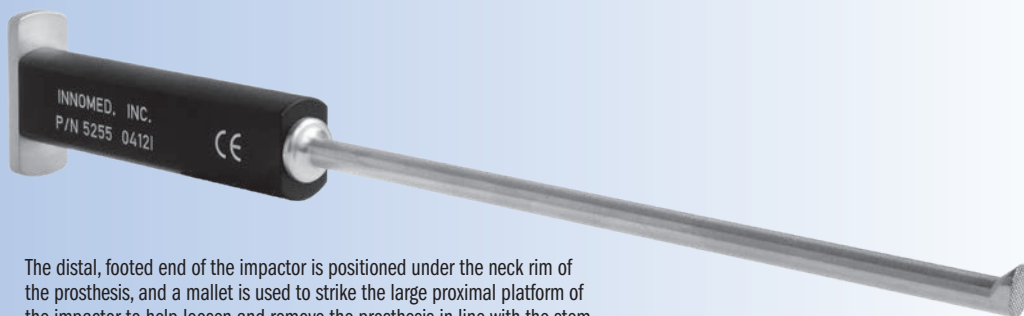
Designed by Gregory Nicholson, MD

Designed to help remove a humeral prosthesis by impacting the medial collar from underneath, after a gap has been exposed between the rim/ bone interface

PRODUCT NO:

5255

Foot Pad Size: 8.5 mm x 11.5 mm
Shaft Diameter: 8.5 mm (21,6 cm)
Overall Length: 12.75" (32,4 cm)
Handle Length: 4.5" (11,4 cm)



The distal, footed end of the impactor is positioned under the neck rim of the prosthesis, and a mallet is used to strike the large proximal platform of the impactor to help loosen and remove the prosthesis in line with the stem.



Wagner Osteotome Handle

Designed by Russell Wagner, MD

Handle is designed for easier gripping, rotational control, and use with a mallet with a standard 1/4" Lambotte osteotome



PRODUCT NO'S:

5348 [Handle Only]
Overall Length: 5.5" (14 cm)

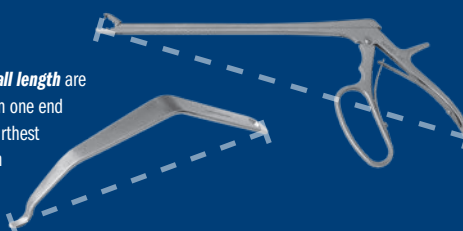
5348-01 [1/4" Osteotome Only]
Overall Length: 8.875" (22,5 cm)



Measurements in this Catalog

All effort has been made to ensure the accuracy of the measurements listed in this catalog, however, some small differences may exist between actual and listed measurements.

Measurements of **overall length** are the linear distance from one end of the product to the furthest opposite end, as shown in these examples:



Measurements of **blade width** are the linear distance from one side of the product to the opposite side, typically at the widest point, as shown in this example:





103 Estus Drive
Savannah, GA 31404

PRSR. STD.
U.S. POSTAGE
PAID
GRAND RAPIDS, MI
PERMIT NO. 748

FREE TRIAL

on most instruments

Instruments are available for a no-charge two-week evaluation – includes FREE Ground Shipping*

*When shipped to a hospital or medical center; additional charge applies for expedited shipping.
Free trial offer excludes implant extraction instruments, which are available as rentals. There is a pad replacement charge with the hip positioners.



New!

Weatherly Mini-Deltoid Retractors

Designed by Wallace Weatherly, MD

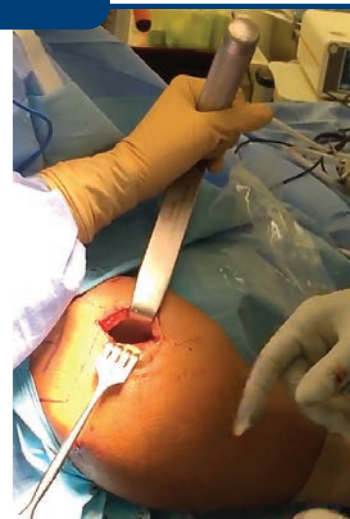
Designed for the retraction of the deltoid in a mini-open mid-deltoid splitting approach to rotator cuff surgery, the offset handle helps allow clear visualization of the surgical field, and the ergonomic non-slip handle surface helps prevent fatigue in the operative team



Large

Medium

Small



PRODUCT NO'S:

5110-L [Large]

Overall Length: 12.75" (32,4 cm)
Depth from Bend: 4.5" (11,4 cm)
Blade Dimensions: 40 mm x 90 mm

5110-M [Medium]

Overall Length: 11" (27,9 cm)
Depth from Bend: 3" (7,6 cm)
Blade Dimensions: 40 mm x 55 mm

5110-S [Small]

Overall Length: 10.5" (26,7 cm)
Depth from Bend: 2.5" (6,4 cm)
Blade Dimensions: 40 mm x 40 mm



Innomed, Inc
103 Estus Drive
Savannah, GA 31404

Tel 912.236.0000
Fax 912.236.7766

www.innomed.net
info@innomed.net

TOLL FREE 1.800.548.2362

www.innomed.net



info@innomed.net

Scan to Launch

Our Website



ISO 13485:2016



© 2020 Innomed, Inc.
All Rights Reserved

08
20

Innomed-Europe LLC
Alte Steinhäuserstr. 19
CH-6330 Cham, Switzerland
Tel 0041 (0) 41 740 67 74
Fax 0041 (0) 41 740 67 71

Innomed-Europe GmbH
Villingen-Schwenningen,
Deutschland
Tel 0049 (0) 7720 46110 60
Fax 0049 (0) 7720 46110 61

www.innomed-europe.com
info@innomed-europe.com